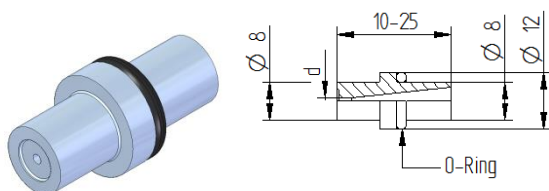


# Round jet nozzle

## Form 4

The round jet nozzle »Form 4« is used in various water tools e.g. guns.



| Technical data     |      |           |
|--------------------|------|-----------|
| Operating pressure | max. | 1,500 bar |
| Weight             |      | 0.011 kg  |

Material-number O-ring: 6.025-168.0  
(O-rings must be ordered separately)

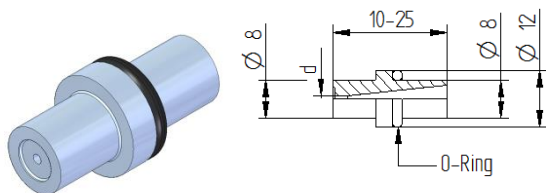
| Variants                    |  |            |             |             |             |             |             |             |             |             |             |             |             |             |             |
|-----------------------------|--|------------|-------------|-------------|-------------|-------------|-------------|-------------|-------------|-------------|-------------|-------------|-------------|-------------|-------------|
| Nozzle-Ø<br>d [mm]          | Operating pressure [bar]               |            |             |             |             |             |             |             |             |             |             |             |             |             |             |
|                             | 200                                    | 300        | 400         | 500         | 600         | 700         | 750         | 800         | 900         | 1000        | 1100        | 1200        | 1300        | 1400        | 1500        |
| Material-number             | Flow rate [l/min]                      |            |             |             |             |             |             |             |             |             |             |             |             |             |             |
|                             | Recoil force in jetting direction [N]* |            |             |             |             |             |             |             |             |             |             |             |             |             |             |
| <b>Blind</b><br>9.885-944.0 |  |            |             |             |             |             |             |             |             |             |             |             |             |             |             |
| <b>0.50</b><br>9.885-948.0  | 2.1<br>7                               | 2.6<br>11  | 3.0<br>14   | 3.4<br>18   | 3.7<br>21   | 4.0<br>25   | 4.1<br>26   | 4.2<br>28   | 4.5<br>32   | 4.7<br>35   | 5.0<br>39   | 5.2<br>42   | 5.4<br>46   | 5.6<br>49   | 5.8<br>53   |
| <b>0.60</b><br>9.885-953.0  | 3.1<br>10                              | 3.7<br>15  | 4.3<br>20   | 4.8<br>25   | 5.3<br>30   | 5.7<br>35   | 5.9<br>38   | 6.1<br>40   | 6.5<br>45   | 6.8<br>50   | 7.2<br>55   | 7.5<br>60   | 7.8<br>66   | 8.1<br>71   | 8.4<br>76   |
| <b>0.70</b><br>9.885-950.0  | 4.2<br>14                              | 5.1<br>21  | 5.9<br>27   | 6.6<br>34   | 7.2<br>41   | 7.8<br>48   | 8.0<br>51   | 8.3<br>55   | 8.8<br>62   | 9.3<br>69   | 9.7<br>75   | 10.2<br>82  | 10.6<br>89  | 11.0<br>96  | 11.4<br>103 |
| <b>0.80</b><br>6.025-200.0  | 5.4<br>18                              | 6.6<br>27  | 7.7<br>36   | 8.6<br>45   | 9.4<br>54   | 10.2<br>63  | 10.5<br>67  | 10.9<br>72  | 11.5<br>81  | 12.1<br>90  | 12.7<br>99  | 13.3<br>108 | 13.8<br>117 | 14.4<br>125 | 14.9<br>134 |
| <b>0.85</b><br>9.886-902.0  | 6.1<br>20                              | 7.5<br>30  | 8.7<br>40   | 9.7<br>51   | 10.6<br>61  | 11.5<br>71  | 11.9<br>76  | 12.3<br>81  | 13.0<br>91  | 13.7<br>101 | 14.4<br>111 | 15.0<br>121 | 15.6<br>132 | 16.2<br>142 | 16.8<br>152 |
| <b>0.90</b><br>6.025-470.0  | 6.9<br>23                              | 8.4<br>34  | 9.7<br>45   | 10.9<br>57  | 11.9<br>68  | 12.9<br>79  | 13.3<br>85  | 13.7<br>91  | 14.6<br>102 | 15.4<br>113 | 16.1<br>125 | 16.8<br>136 | 17.5<br>147 | 18.2<br>159 | 18.8<br>170 |
| <b>1.00</b><br>6.025-198.0  | 8.5<br>28                              | 10.4<br>42 | 12.0<br>56  | 13.4<br>70  | 14.7<br>84  | 15.9<br>98  | 16.4<br>105 | 17.0<br>112 | 18.0<br>126 | 19.0<br>140 | 19.9<br>154 | 20.8<br>168 | 21.6<br>182 | 22.4<br>196 | 23.2<br>210 |
| <b>1.10</b><br>9.885-951.0  | 10.3<br>34                             | 12.6<br>51 | 14.5<br>68  | 16.2<br>85  | 17.8<br>102 | 19.2<br>119 | 19.9<br>127 | 20.5<br>136 | 21.8<br>152 | 23.0<br>169 | 24.1<br>186 | 25.1<br>203 | 26.2<br>220 | 27.2<br>237 | 28.1<br>254 |
| <b>1.20</b><br>6.025-199.0  | 12.2<br>40                             | 15.0<br>60 | 17.3<br>81  | 19.3<br>101 | 21.2<br>121 | 22.9<br>141 | 23.8<br>151 | 24.4<br>161 | 25.9<br>181 | 27.3<br>202 | 28.6<br>222 | 29.9<br>242 | 31.1<br>262 | 32.3<br>282 | 33.5<br>302 |
| <b>1.25</b><br>6.025-471.0  | 13.3<br>44                             | 16.2<br>66 | 18.7<br>88  | 21.0<br>109 | 23.0<br>131 | 24.8<br>153 | 25.7<br>164 | 26.5<br>175 | 28.1<br>197 | 29.6<br>219 | 31.1<br>241 | 32.5<br>263 | 33.8<br>284 | 35.1<br>306 | 36.3<br>328 |
| <b>1.30</b><br>6.025-196.0  | 14.3<br>47                             | 17.6<br>71 | 20.3<br>95  | 22.7<br>118 | 24.8<br>142 | 26.8<br>166 | 27.8<br>177 | 28.7<br>189 | 30.4<br>213 | 32.1<br>237 | 33.6<br>260 | 35.1<br>284 | 36.5<br>308 | 37.9<br>331 | 39.3<br>355 |
| <b>1.40</b><br>9.885-945.0  | 16.6<br>55                             | 20.4<br>82 | 23.5<br>110 | 26.3<br>137 | 28.8<br>165 | 31.1<br>192 | 32.2<br>206 | 33.3<br>220 | 35.3<br>247 | 37.2<br>274 | 39.0<br>302 | 40.7<br>329 | 42.4<br>357 | 44.0<br>384 | 45.5<br>412 |

\* For a manual spraying unit without body support. a max. recoil force of 150 N is permitted.

\* For a manual spraying unit with body support. a max. recoil force of 250 N is permitted

# Round jet nozzle Form 4

The round jet nozzle »Form 4« is used in various water tools e.g. guns.



| Technical data     |                |
|--------------------|----------------|
| Operating pressure | max. 1,500 bar |
| Weight             | 0.011 kg       |

Material-number O-ring: 6.025-168.0  
(O-rings must be ordered separately)

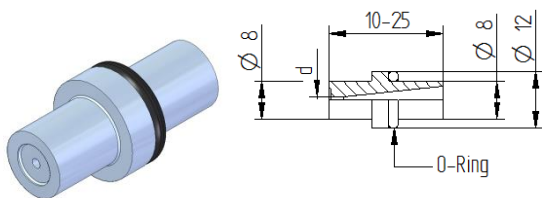
| Variants                   |  |             |             |             |              |              |              |              |              |               |               |               |               |               |               |
|----------------------------|--|-------------|-------------|-------------|--------------|--------------|--------------|--------------|--------------|---------------|---------------|---------------|---------------|---------------|---------------|
| Düsen-Ø<br>d [mm]          | Operating pressure [bar]               |             |             |             |              |              |              |              |              |               |               |               |               |               |               |
|                            | 200                                    | 300         | 400         | 500         | 600          | 700          | 750          | 800          | 900          | 1000          | 1100          | 1200          | 1300          | 1400          | 1500          |
| Material-<br>Nummer        | Flow rate [l/min]                      |             |             |             |              |              |              |              |              |               |               |               |               |               |               |
|                            | Recoil force in jetting direction [N]* |             |             |             |              |              |              |              |              |               |               |               |               |               |               |
| <b>1.30</b><br>6.025-196.0 | 14.3<br>47                             | 17.6<br>71  | 20.3<br>95  | 22.7<br>118 | 24.8<br>142  | 26.8<br>166  | 27.8<br>177  | 28.7<br>189  | 30.4<br>213  | 32.1<br>237   | 33.6<br>260   | 35.1<br>284   | 36.5<br>308   | 37.9<br>331   | 39.3<br>355   |
| <b>1.40</b><br>9.885-945.0 | 16.6<br>55                             | 20.4<br>82  | 23.5<br>110 | 26.3<br>137 | 28.8<br>165  | 31.1<br>192  | 32.2<br>206  | 33.3<br>220  | 35.3<br>247  | 37.2<br>274   | 39.0<br>302   | 40.7<br>329   | 42.4<br>357   | 44.0<br>384   | 45.5<br>412   |
| <b>1.50</b><br>9.885-931.0 | 19.1<br>63                             | 23.4<br>95  | 27.0<br>126 | 30.2<br>158 | 33.1<br>189  | 35.7<br>221  | 37.0<br>236  | 38.2<br>252  | 40.5<br>284  | 42.7<br>315   | 44.8<br>347   | 46.8<br>378   | 48.7<br>410   | 50.5<br>441   | 52.3<br>473   |
| <b>1.60</b><br>9.885-947.0 | 21.7<br>72                             | 26.6<br>108 | 30.7<br>143 | 34.4<br>179 | 37.6<br>215  | 40.6<br>251  | 42.1<br>269  | 43.4<br>287  | 46.1<br>323  | 48.6<br>358   | 50.9<br>394   | 53.2<br>430   | 55.4<br>466   | 57.5<br>502   | 59.5<br>538   |
| <b>1.70</b><br>9.885-946.0 | 24.5<br>81                             | 30.0<br>121 | 34.7<br>162 | 38.8<br>202 | 42.5<br>243  | 45.9<br>283  | 45.5<br>304  | 49.0<br>324  | 52.0<br>364  | 54.8<br>405   | 57.5<br>445   | 60.0<br>486   | 62.5<br>526   | 64.9<br>567   | 67.1<br>607   |
| <b>1.80</b><br>9.885-932.0 | 27.5<br>91                             | 33.7<br>136 | 38.9<br>181 | 43.5<br>227 | 47.6<br>272  | 51.4<br>318  | 53.2<br>340  | 55.0<br>363  | 58.3<br>408  | 61.5<br>454   | 64.5<br>499   | 67.3<br>544   | 70.1<br>590   | 72.7<br>635   | 75.3<br>681   |
| <b>1.90</b><br>9.885-952.0 | 30.6<br>101                            | 37.5<br>152 | 43.3<br>202 | 48.4<br>253 | 53.0<br>303  | 57.3<br>354  | 59.3<br>379  | 61.2<br>404  | 65.0<br>455  | 68.5<br>505   | 71.8<br>556   | 75.0<br>607   | 78.1<br>657   | 81.0<br>708   | 83.9<br>758   |
| <b>2.00</b><br>9.885-933.0 | 33.9<br>112                            | 41.6<br>168 | 48.0<br>224 | 53.6<br>280 | 58.8<br>336  | 63.5<br>392  | 65.7<br>420  | 67.9<br>448  | 72.0<br>504  | 75.9<br>560   | 79.6<br>616   | 83.1<br>672   | 86.5<br>728   | 89.8<br>784   | 92.9<br>840   |
| <b>2.20</b><br>9.885-934.0 | 41.1<br>136                            | 50.3<br>203 | 58.1<br>271 | 64.9<br>339 | 71.1<br>407  | 76.8<br>474  | 79.5<br>508  | 82.1<br>542  | 87.1<br>610  | 91.8<br>678   | 96.3<br>746   | 100.6<br>813  | 104.7<br>881  | 108.6<br>949  | 112.4<br>1017 |
| <b>2.30</b><br>9.885-964.0 | 44.9<br>148                            | 55.0<br>222 | 63.5<br>296 | 71.0<br>370 | 77.7<br>444  | 83.9<br>519  | 86.9<br>556  | 89.7<br>593  | 95.2<br>667  | 100.3<br>741  | 105.2<br>815  | 109.9<br>889  | 114.4<br>963  | 118.7<br>1037 | 122.9<br>1111 |
| <b>2.40</b><br>9.885-935.0 | 48.9<br>161                            | 59.8<br>242 | 69.1<br>323 | 77.3<br>403 | 84.6<br>484  | 91.4<br>565  | 94.6<br>605  | 97.7<br>645  | 103.6<br>726 | 109.3<br>807  | 114.6<br>887  | 119.7<br>968  | 124.6<br>1049 | 129.3<br>1129 | 133.8<br>1210 |
| <b>2.50</b><br>9.885-936.0 | 53.0<br>175                            | 64.9<br>263 | 75.0<br>350 | 83.8<br>438 | 91.8<br>525  | 99.2<br>613  | 102.7<br>656 | 106.0<br>700 | 112.5<br>788 | 118.5<br>875  | 124.3<br>963  | 129.9<br>1050 | 135.2<br>1138 | 140.3<br>1225 | 145.2<br>1313 |
| <b>2.70</b><br>9.885-965.0 | 61.8<br>204                            | 75.7<br>306 | 87.5<br>408 | 97.8<br>510 | 107.1<br>612 | 115.7<br>715 | 119.7<br>766 | 123.7<br>817 | 131.2<br>919 | 138.3<br>1021 | 145.0<br>1123 | 151.5<br>1225 | 157.7<br>1327 | 163.6<br>1429 | 169.4<br>1531 |

\* For a manual spraying unit without body support. a max. recoil force of 150 N is permitted.

\* For a manual spraying unit with body support. a max. recoil force of 250 N is permitted.

# Round jet nozzle Form 4

The round jet nozzle »Form 4« is used in various water tools e.g. guns.



| Technical data     |                |
|--------------------|----------------|
| Operating pressure | max. 1,500 bar |
| Weight             | 0.011 kg       |

Material-number O-ring: 6.025-168.0  
(O-rings must be ordered separately)

| Variants                   |  |               |               |               |               |               |               |               |               |               |               |               |               |               |               |
|----------------------------|--|---------------|---------------|---------------|---------------|---------------|---------------|---------------|---------------|---------------|---------------|---------------|---------------|---------------|---------------|
| Düsen-Ø<br>d [mm]          | Operating pressure [bar]               |               |               |               |               |               |               |               |               |               |               |               |               |               |               |
|                            | 200                                    | 300           | 400           | 500           | 600           | 700           | 750           | 800           | 900           | 1000          | 1100          | 1200          | 1300          | 1400          | 1500          |
| Material-<br>Nummer        | Flow rate [l/min]                      |               |               |               |               |               |               |               |               |               |               |               |               |               |               |
|                            | Recoil force in jetting direction [N]* |               |               |               |               |               |               |               |               |               |               |               |               |               |               |
| <b>2.80</b><br>9.885-937.0 | 66.5<br>220                            | 81.4<br>329   | 94.0<br>439   | 105.2<br>549  | 115.2<br>659  | 124.4<br>768  | 128.8<br>823  | 133.0<br>878  | 141.1<br>988  | 148.7<br>1098 | 156.0<br>1208 | 162.9<br>1317 | 169.6<br>1427 | 176.0<br>1537 | 182.1<br>1647 |
| <b>2.90</b><br>9.886-905.0 | 71.3<br>236                            | 87.4<br>353   | 100.9<br>471  | 112.8<br>589  | 123.6<br>707  | 133.5<br>824  | 138.1<br>883  | 142.7<br>942  | 151.3<br>1060 | 159.5<br>1178 | 167.3<br>1295 | 174.7<br>1413 | 181.9<br>1531 | 188.7<br>1649 | 195.4<br>1766 |
| <b>3.00</b><br>9.885-938.0 | 76.3<br>252                            | 93.5<br>378   | 108.0<br>504  | 120.7<br>630  | 132.2<br>756  | 142.8<br>882  | 147.8<br>945  | 152.7<br>1008 | 161.9<br>1134 | 170.7<br>1260 | 179.0<br>1386 | 187.0<br>1512 | 194.6<br>1638 | 202.0<br>1764 | 209.1<br>1890 |
| <b>3.20</b><br>9.885-939.0 | 86.9<br>287                            | 106.4<br>430  | 122.8<br>574  | 137.3<br>717  | 150.4<br>860  | 162.5<br>1004 | 168.2<br>1075 | 173.7<br>1147 | 184.3<br>1290 | 194.2<br>1434 | 203.7<br>1577 | 212.8<br>1721 | 221.5<br>1864 | 229.8<br>2007 | 237.9<br>2151 |
| <b>3.30</b><br>9.886-904.0 | 92.4<br>305                            | 113.1<br>457  | 130.6<br>610  | 146.1<br>762  | 160.0<br>915  | 172.8<br>1067 | 178.9<br>1144 | 184.8<br>1220 | 196.0<br>1372 | 206.6<br>1525 | 216.6<br>1677 | 226.3<br>1830 | 235.5<br>1982 | 244.4<br>2135 | 253.0<br>2287 |
| <b>3.50</b><br>9.885-940.0 | 103.9<br>343                           | 127.3<br>515  | 147.0<br>686  | 164.3<br>858  | 180.0<br>1029 | 194.4<br>1201 | 201.2<br>1286 | 207.8<br>1372 | 220.4<br>1544 | 232.4<br>1715 | 243.7<br>1887 | 254.5<br>2058 | 264.9<br>2230 | 274.9<br>2401 | 284.6<br>2573 |
| <b>3.60</b><br>9.886-903.0 | 109.9<br>363                           | 134.6<br>544  | 155.5<br>726  | 173.8<br>907  | 190.4<br>1089 | 205.7<br>1270 | 212.9<br>1361 | 219.9<br>1452 | 233.2<br>1633 | 245.8<br>1815 | 257.8<br>1996 | 269.3<br>2178 | 280.3<br>2359 | 290.9<br>2541 | 301.1<br>2722 |
| <b>4.00</b><br>9.885-941.0 | 135.7<br>448                           | 166.2<br>672  | 191.9<br>896  | 214.6<br>1120 | 235.1<br>1344 | 253.9<br>1568 | 262.8<br>1680 | 271.4<br>1792 | 287.9<br>2016 | 303.5<br>2240 | 318.3<br>2464 | 332.4<br>2689 | 346.0<br>2913 | 359.1<br>3137 | 371.7<br>3361 |
| <b>4.50</b><br>9.885-943.0 | 171.8<br>567                           | 210.4<br>851  | 242.9<br>1134 | 271.6<br>1418 | 297.5<br>1701 | 321.4<br>1985 | 332.6<br>2127 | 343.5<br>2268 | 364.4<br>2552 | 384.1<br>2836 | 402.8<br>3119 | 420.8<br>3403 | 437.9<br>3686 | 454.5<br>3970 | 470.4<br>4253 |
| <b>5.00</b><br>9.885-942.0 | 212.1<br>700                           | 259.7<br>1050 | 299.9<br>1400 | 335.3<br>1750 | 367.3<br>2100 | 396.7<br>2450 | 410.7<br>2625 | 424.1<br>2801 | 449.9<br>3151 | 474.2<br>3501 | 497.3<br>3851 | 519.4<br>4201 | 540.7<br>4551 | 561.1<br>4901 | 580.8<br>5251 |

\* For a manual spraying unit without body support. a max. recoil force of 150 N is permitted.

\* For a manual spraying unit with body support. a max. recoil force of 250 N is permitted.

## Accessories

|  |             |
|--|-------------|
| Nut runner for nozzle form 4 and form 19 | 9.883-469.0 |
|--|-------------|