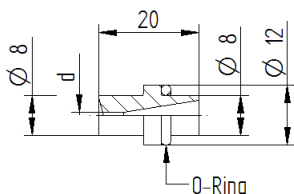


Flat jet nozzle

Form 19

The flat jet nozzle »Form 19« is use for various water tools e.g. guns.



Technical data		
Operating pressure	max.	1,500 bar
Weight		0.011 kg

Material-number O-ring: 6.025-168.0
(O-rings must be ordered separately)

Variants															
Nozzle-Ø d [mm]	Operating pressure [bar]														
	200	300	400	500	600	700	750	800	900	1000	1100	1200	1300	1400	1500
Material-number	Flow rate [l/min]														
	Recoil force in jetting direction [N]*														
Blind 9.885-944.0															
0.60-10° 6.025-457.0	2.3 8	2.8 11	3.2 15	3.6 19	3.9 23	4.3 26	4.4 28	4.5 30	4.8 34	5.1 38	5.3 41	5.6 45	5.8 49	6.0 53	6.2 56
0.60-30° 6.025-458.0	2.3 8	2.8 11	3.2 15	3.6 19	3.9 23	4.3 26	4.4 28	4.5 30	4.8 34	5.1 38	5.3 41	5.6 45	5.8 49	6.0 53	6.2 56
0.70-10° 6.025-459.0	3.1 10	3.8 15	4.4 20	4.9 26	5.4 31	5.8 36	6.0 38	6.2 41	6.6 46	6.9 51	7.3 56	7.6 61	7.9 66	8.2 72	8.5 77
0.70-20° 6.025-460.0	3.1 10	3.8 15	4.4 20	4.9 26	5.4 31	5.8 36	6.0 38	6.2 41	6.6 46	6.9 51	7.3 56	7.6 61	7.9 66	8.2 72	8.5 77
0.70-30° 6.025-461.0	3.1 10	3.8 15	4.4 20	4.9 26	5.4 31	5.8 36	6.0 38	6.2 41	6.6 46	6.9 51	7.3 56	7.6 61	7.9 66	8.2 72	8.5 77
0.80-30° 9.886-186.0	4.0 13	4.9 20	5.7 27	6.4 33	7.0 40	7.6 47	7.8 50	8.1 53	8.6 60	9.0 67	9.5 73	9.9 80	10.3 87	10.7 93	11.1 100
0.90-10° 6.025-462.0	5.1 17	6.3 25	7.2 34	8.1 42	8.9 51	9.6 59	9.9 63	10.2 68	10.9 76	11.4 84	12.0 93	12.5 101	13.0 110	13.5 118	14.0 127
0.90-20° 6.025-463.0	5.1 17	6.3 25	7.2 34	8.1 42	8.9 51	9.6 59	9.9 63	10.2 68	10.9 76	11.4 84	12.0 93	12.5 101	13.0 110	13.5 118	14.0 127
0.90-30° 6.025-464.0	5.1 17	6.3 25	7.2 34	8.1 42	8.9 51	9.6 59	9.9 63	10.2 68	10.9 76	11.4 84	12.0 93	12.5 101	13.0 110	13.5 118	14.0 127
0.90-60° 9.912-874.0	5.1 17	6.3 25	7.2 34	8.1 42	8.9 51	9.6 59	9.9 63	10.2 68	10.9 76	11.4 84	12.0 93	12.5 101	13.0 110	13.5 118	14.0 127
1.00-10° 6.025-217.0	6.3 21	7.7 31	8.9 42	10.0 52	10.9 63	11.8 73	12.2 78	12.6 83	13.4 94	14.1 104	14.8 115	15.5 125	16.1 136	16.7 146	17.3 156
1.00-20° 6.025-214.0	6.3 21	7.7 31	8.9 42	10.0 52	10.9 63	11.8 73	12.2 78	12.6 83	13.4 94	14.1 104	14.8 115	15.5 125	16.1 136	16.7 146	17.3 156

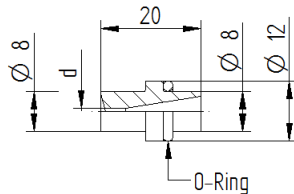
* For manual spraying device without body support a max. recoil force of **150 N** is allowed.

* For manual spraying device with body support a max. recoil force of **250 N** is allowed.

Flat jet nozzle

Form 19

The flat jet nozzle »Form 19« is use for various water tools e.g. guns.



Technical data		
Operating pressure	max.	1,500 bar
Weight		0.011 kg

Material-number O-ring: 6.025-168.0
(O-rings must be ordered separately)

Variants															
Nozzle- \varnothing d [mm]	Operating pressure [bar]														
	200	300	400	500	600	700	750	800	900	1000	1100	1200	1300	1400	1500
Material-number	Flow rate [l/min]														
	Recoil force in jetting direction [N]*														
1.00-30° 6.025-215.0	6.3 21	7.7 31	8.9 42	10.0 52	10.9 63	11.8 73	12.2 78	12.6 83	13.4 94	14.1 104	14.8 115	15.5 125	16.1 136	16.7 146	17.3 156
1.00-40° 6.025-216.0	6.3 21	7.7 31	8.9 42	10.0 52	10.9 63	11.8 73	12.2 78	12.6 83	13.4 94	14.1 104	14.8 115	15.5 125	16.1 136	16.7 146	17.3 156
1.00-60° 9.886-163.0	6.3 21	7.7 31	8.9 42	10.0 52	10.9 63	11.8 73	12.2 78	12.6 83	13.4 94	14.1 104	14.8 115	15.5 125	16.1 136	16.7 146	17.3 156
1.10-10° 6.025-465.0	7.6 25	9.4 38	10.8 50	12.1 63	13.2 76	14.3 88	14.8 95	15.3 101	16.2 114	17.1 126	17.9 139	18.7 151	19.5 164	20.2 177	20.9 189
1.10-20° 6.025-466.0	7.6 25	9.4 38	10.8 50	12.1 63	13.2 76	14.3 88	14.8 95	15.3 101	16.2 114	17.1 126	17.9 139	18.7 151	19.5 164	20.2 177	20.9 189
1.10-30° 6.025-467.0	7.6 25	9.4 38	10.8 50	12.1 63	13.2 76	14.3 88	14.8 95	15.3 101	16.2 114	17.1 126	17.9 139	18.7 151	19.5 164	20.2 177	20.9 189
1.20-10° 6.025-206.0	9.1 30	11.1 45	12.9 60	14.4 75	15.8 90	17.0 105	17.6 113	18.2 120	19.3 135	20.3 150	21.3 165	22.3 180	23.2 195	24.1 210	24.9 225
1.20-20° 6.025-207.0	9.1 30	11.1 45	12.9 60	14.4 75	15.8 90	17.0 105	17.6 113	18.2 120	19.3 135	20.3 150	21.3 165	22.3 180	23.2 195	24.1 210	24.9 225
1.20-30° 6.025-208.0	9.1 30	11.1 45	12.9 60	14.4 75	15.8 90	17.0 105	17.6 113	18.2 120	19.3 135	20.3 150	21.3 165	22.3 180	23.2 195	24.1 210	24.9 225
1.20-45° 6.025-209.0	9.1 30	11.1 45	12.9 60	14.4 75	15.8 90	17.0 105	17.6 113	18.2 120	19.3 135	20.3 150	21.3 165	22.3 180	23.2 195	24.1 210	24.9 225
1.20-60° 9.886-164.0	9.1 30	11.1 45	12.9 60	14.4 75	15.8 90	17.0 105	17.6 113	18.2 120	19.3 135	20.3 150	21.3 165	22.3 180	23.2 195	24.1 210	24.9 225
1.30-10° 6.025-468.0	10.7 35	13.1 53	15.1 70	16.9 88	18.5 106	20.0 123	20.7 132	21.3 141	22.6 159	23.9 176	25.0 194	26.1 211	27.2 229	28.2 247	29.2 264
1.30-30° 6.025-469.0	10.7 35	13.1 53	15.1 70	16.9 88	18.5 106	20.0 123	20.7 132	21.3 141	22.6 159	23.9 176	25.0 194	26.1 211	27.2 229	28.2 247	29.2 264

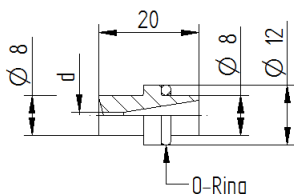
* For manual spraying device without body support a max. recoil force of **150 N** is allowed.

* For manual spraying device with body support a max. recoil force of **250 N** is allowed.

Flat jet nozzle

Form 19

The flat jet nozzle »Form 19« is use for various water tools e.g. guns



Technical data		
Operating pressure	max.	1,500 bar
Weight		0.011 kg

Material-number O-ring: 6.025-168.0
(O-rings must be ordered separately)

Variants															
Nozzle- \varnothing d [mm]	Operating pressure [bar]														
	200	300	400	500	600	700	750	800	900	1000	1100	1200	1300	1400	1500
Material-number	Flow rate [l/min]														
	Recoil force in jetting direction [N]*														
1.30-40° 9.886-184.0	10.7 35	13.1 53	15.1 70	16.9 88	18.5 106	20.0 123	20.7 132	21.3 141	22.6 159	23.9 176	25.0 194	26.1 211	27.2 229	28.2 247	29.2 264
1.40-10° 6.025-210.0	12.4 41	15.2 61	17.5 82	19.6 102	21.4 123	23.2 143	24.0 153	24.8 163	26.3 184	27.7 204	29.0 225	30.3 245	31.6 266	32.7 286	33.9 306
1.40-20° 6.025-211.0	12.4 41	15.2 61	17.5 82	19.6 102	21.4 123	23.2 143	24.0 153	24.8 163	26.3 184	27.7 204	29.0 225	30.3 245	31.6 266	32.7 286	33.9 306
1.40-30° 6.025-212.0	12.4 41	15.2 61	17.5 82	19.6 102	21.4 123	23.2 143	24.0 153	24.8 163	26.3 184	27.7 204	29.0 225	30.3 245	31.6 266	32.7 286	33.9 306
1.40-60° 6.025-213.0	12.4 41	15.2 61	17.5 82	19.6 102	21.4 123	23.2 143	24.0 153	24.8 163	26.3 184	27.7 204	29.0 225	30.3 245	31.6 266	32.7 286	33.9 306
1.50-10° 6.025-201.0	14.2 47	17.4 70	20.1 94	22.5 117	24.6 141	26.6 164	27.5 176	28.4 188	30.1 211	31.8 235	33.3 258	34.8 281	36.2 305	37.6 328	38.9 352
1.50-15° 6.025-202.0	14.2 47	17.4 70	20.1 94	22.5 117	24.6 141	26.6 164	27.5 176	28.4 188	30.1 211	31.8 235	33.3 258	34.8 281	36.2 305	37.6 328	38.9 352
1.50-20° 6.025-203.0	14.2 47	17.4 70	20.1 94	22.5 117	24.6 141	26.6 164	27.5 176	28.4 188	30.1 211	31.8 235	33.3 258	34.8 281	36.2 305	37.6 328	38.9 352
1.50-30° 6.025-204.0	14.2 47	17.4 70	20.1 94	22.5 117	24.6 141	26.6 164	27.5 176	28.4 188	30.1 211	31.8 235	33.3 258	34.8 281	36.2 305	37.6 328	38.9 352
1.50-40° 6.025-205.0	14.2 47	17.4 70	20.1 94	22.5 117	24.6 141	26.6 164	27.5 176	28.4 188	30.1 211	31.8 235	33.3 258	34.8 281	36.2 305	37.6 328	38.9 352
1.50-45° 9.886-173.0	14.2 47	17.4 70	20.1 94	22.5 117	24.6 141	26.6 164	27.5 176	28.4 188	30.1 211	31.8 235	33.3 258	34.8 281	36.2 305	37.6 328	38.9 352
1.50-60° 9.886-169.0	14.2 47	17.4 70	20.1 94	22.5 117	24.6 141	26.6 164	27.5 176	28.4 188	30.1 211	31.8 235	33.3 258	34.8 281	36.2 305	37.6 328	38.9 352
1.60-10° 9.909-586.0	16.2 53	19.8 80	22.5 107	25.6 133	28.0 160	30.2 187	31.3 200	32.3 213	34.3 240	36.1 267	37.9 294	39.6 320	41.2 347	42.8 374	44.3 400

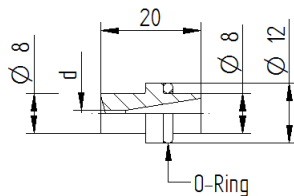
* For manual spraying device without body support a max. recoil force of **150 N** is allowed.

* For manual spraying device with body support a max. recoil force of **250 N** is allowed.

Flat jet nozzle

Form 19

The flat jet nozzle »Form 19« is use for various water tools e.g. guns.



Technical data		
Operating pressure	max.	1,500 bar
Weight		0.011 kg

Material-number O-ring: 6.025-168.0
(O-rings must be ordered separately)

Variants															
Nozzle- \varnothing d [mm]	Operating pressure [bar]														
	200	300	400	500	600	700	750	800	900	1000	1100	1200	1300	1400	1500
Material-number	Flow rate [l/min]														
	Recoil force in jetting direction [N]*														
1.60-20° 9.886-180.0	16.2 53	19.8 80	22.5 107	25.6 133	28.0 160	30.2 187	31.3 200	32.3 213	34.3 240	36.1 267	37.9 294	39.6 320	41.2 347	42.8 374	44.3 400
1.60-30° 9.886-181.0	16.2 53	19.8 80	22.5 107	25.6 133	28.0 160	30.2 187	31.3 200	32.3 213	34.3 240	36.1 267	37.9 294	39.6 320	41.2 347	42.8 374	44.3 400
1.70-10° 9.886-168.0	18.2 60	22.4 90	25.8 121	28.9 151	31.6 181	34.1 211	35.3 226	36.5 241	38.7 271	40.8 301	42.8 331	44.7 362	46.5 392	48.3 422	50.0 452
1.70-20° 9.886-153.0	18.2 60	22.4 90	25.8 121	28.9 151	31.6 181	34.1 211	35.3 226	36.5 241	38.7 271	40.8 301	42.8 331	44.7 362	46.5 392	48.3 422	50.0 452
1.70-30° 9.886-152.0	18.2 60	22.4 90	25.8 121	28.9 151	31.6 181	34.1 211	35.3 226	36.5 241	38.7 271	40.8 301	42.8 331	44.7 362	46.5 392	48.3 422	50.0 452
1.70-60° 9.886-167.0	18.2 60	22.4 90	25.8 121	28.9 151	31.6 181	34.1 211	35.3 226	36.5 241	38.7 271	40.8 301	42.8 331	44.7 362	46.5 392	48.3 422	50.0 452
1.80-10° 9.886-161.0	20.5 68	25.1 101	28.9 135	32.4 169	35.4 203	38.3 236	39.6 253	40.9 270	43.4 304	45.7 338	48.0 372	50.1 405	52.2 439	54.1 473	56.0 507
1.80-20° 9.886-157.0	20.5 68	25.1 101	28.9 135	32.4 169	35.4 203	38.3 236	39.6 253	40.9 270	43.4 304	45.7 338	48.0 372	50.1 405	52.2 439	54.1 473	56.0 507
1.80-30° 9.886-154.0	20.5 68	25.1 101	28.9 135	32.4 169	35.4 203	38.3 236	39.6 253	40.9 270	43.4 304	45.7 338	48.0 372	50.1 405	52.2 439	54.1 473	56.0 507
1.80-40° 9.886-162.0	20.5 68	25.1 101	28.9 135	32.4 169	35.4 203	38.3 236	39.6 253	40.9 270	43.4 304	45.7 338	48.0 372	50.1 405	52.2 439	54.1 473	56.0 507
1.80-60° 9.886-172.0	20.5 68	25.1 101	28.9 135	32.4 169	35.4 203	38.3 236	39.6 253	40.9 270	43.4 304	45.7 338	48.0 372	50.1 405	52.2 439	54.1 473	56.0 507
1.90-30° 9.886-909.0	22.8 75	27.9 113	32.2 151	36.0 188	39.5 226	42.6 263	44.1 282	45.6 301	48.4 339	51.0 376	53.5 414	55.8 452	58.1 489	60.3 527	62.4 564
1.90-60° 9.886-166.0	22.8 75	27.9 113	32.2 151	36.0 188	39.5 226	42.6 263	44.1 282	45.6 301	48.4 339	51.0 376	53.5 414	55.8 452	58.1 489	60.3 527	62.4 564

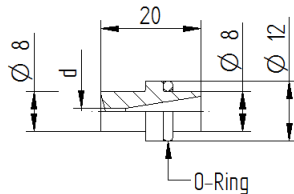
* For manual spraying device without body support a max. recoil force of **150 N** is allowed.

* For manual spraying device with body support a max. recoil force of **250 N** is allowed.

Flat jet nozzle

Form 19

The flat jet nozzle »Form 19« is use for various water tools e.g. guns.



Technical data		
Operating pressure	max.	1,500 bar
Weight		0.011 kg

Material-number O-ring: 6.025-168.0
(O-rings must be ordered separately)

Variants															
Nozzle-Ø d [mm]	Operating pressure [bar]														
	200	300	400	500	600	700	750	800	900	1000	1100	1200	1300	1400	1500
Material- number	Flow rate [l/min]														
	Recoil force in jetting direction [N]*														
2.00-20°	25.3	30.9	35.7	39.9	43.8	47.3	48.9	50.5	53.6	56.5	59.2	61.9	64.4	66.8	69.2
9.886-145.0	83	125	167	208	250	292	313	334	375	417	459	500	542	584	625
2.00-30°	25.3	30.9	35.7	39.9	43.8	47.3	48.9	50.5	53.6	56.5	59.2	61.9	64.4	66.8	69.2
9.886-146.0	83	125	167	208	250	292	313	334	375	417	459	500	542	584	625
2.00-45°	25.3	30.9	35.7	39.9	43.8	47.3	48.9	50.5	53.6	56.5	59.2	61.9	64.4	66.8	69.2
9.886-158.0	83	125	167	208	250	292	313	334	375	417	459	500	542	584	625
2.00-60°	25.3	30.9	35.7	39.9	43.8	47.3	48.9	50.5	53.6	56.5	59.2	61.9	64.4	66.8	69.2
9.909-585.0	83	125	167	208	250	292	313	334	375	417	459	500	542	584	625
2.10-60°	27.8	34.1	39.4	44.0	48.2	52.1	53.9	55.7	59.1	62.3	65.3	68.2	71.0	73.7	76.3
9.886-165.0	92	138	184	230	276	322	345	368	414	460	506	552	598	644	690
2.20-10°	30.6	37.4	43.2	48.3	52.9	57.2	59.2	61.1	64.8	68.3	71.7	74.9	77.9	80.9	83.8
9.886-182.0	101	151	202	252	303	353	378	404	454	505	555	605	656	706	757
2.20-20°	30.6	37.4	43.2	48.3	52.9	57.2	59.2	61.1	64.8	68.3	71.7	74.9	77.9	80.9	83.8
9.886-147.0	101	151	202	252	303	353	378	404	454	505	555	605	656	706	757
2.20-30°	30.6	37.4	43.2	48.3	52.9	57.2	59.2	61.1	64.8	68.3	71.7	74.9	77.9	80.9	83.8
9.886-148.0	101	151	202	252	303	353	378	404	454	505	555	605	656	706	757
2.20-45°	30.6	37.4	43.2	48.3	52.9	57.2	59.2	61.1	64.8	68.3	71.7	74.9	77.9	80.9	83.8
9.909-584.0	101	151	202	252	303	353	378	404	454	505	555	605	656	706	757
2.20-60°	30.6	37.4	43.2	48.3	52.9	57.2	59.2	61.1	64.8	68.3	71.7	74.9	77.9	80.9	83.8
9.886-912.0	101	151	202	252	303	353	378	404	454	505	555	605	656	706	757
2.40-25°	36.4	44.5	51.4	57.5	63.0	68.0	70.4	72.7	77.2	81.3	85.3	89.1	92.7	96.2	99.6
9.886-906.0	120	180	240	300	360	420	450	480	540	600	660	721	781	841	901
2.50-20°	39.5	48.3	55.8	62.4	68.4	73.8	76.4	78.9	83.7	88.3	92.6	96.7	100.6	104.4	108.1
9.886-155.0	130	195	261	326	391	456	489	521	586	652	717	782	847	912	977
2.50-30°	39.5	48.3	55.8	62.4	68.4	73.8	76.4	78.9	83.7	88.3	92.6	96.7	100.6	104.4	108.1
9.886-149.0	130	195	261	326	391	456	489	521	586	652	717	782	847	912	977

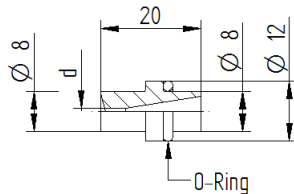
* For manual spraying device without body support a max. recoil force of **150 N** is allowed.

* For manual spraying device with body support a max. recoil force of **250 N** is allowed.

Flat jet nozzle

Form 19

The flat jet nozzle »Form 19« is use for various water tools e.g. guns.



Technical data		
Operating pressure	max.	1,500 bar
Weight		0.011 kg

Material-number O-ring: 6.025-168.0
(O-rings must be ordered separately)

Variants															
Nozzle- \varnothing d [mm]	Operating pressure [bar]														
	200	300	400	500	600	700	750	800	900	1000	1100	1200	1300	1400	1500
Material-number	Flow rate [l/min]														
	Recoil force in jetting direction [N]*														
2.50-45° 9.886-160.0	39.5 130	48.3 195	55.8 261	62.4 326	68.4 391	73.8 456	76.4 489	78.9 521	83.7 586	88.3 652	92.6 717	96.7 782	100.6 847	104.4 912	108.1 977
2.70-60° 9.886-170.0	46.0 152	56.4 228	65.1 304	72.8 380	79.7 456	86.1 532	89.1 570	92.1 608	97.7 684	102.9 760	108.0 836	112.8 912	117.4 988	121.8 1064	126.1 1140
3.00-30° 9.886-150.0	56.8 188	69.6 281	80.4 375	89.9 469	98.4 563	106.3 657	110.1 704	113.7 751	120.6 844	127.1 938	133.3 1032	139.2 1126	144.9 1220	150.4 1313	155.6 1407
3.00-45° 9.886-151.0	56.8 188	69.6 281	80.4 375	89.9 469	98.4 563	106.3 657	110.1 704	113.7 751	120.6 844	127.1 938	133.3 1032	139.2 1126	144.9 1220	150.4 1313	155.6 1407

* For manual spraying device without body support a max. recoil force of **150 N** is allowed.

* For manual spraying device with body support a max. recoil force of **250 N** is allowed.

Accessories	
Adjustment tool nozzle form 19	9.883-958.0
Nut runner for nozzle form 4 and form 19	9.883-469.0