

A white car is shown from the rear, positioned inside a Kärcher gantry car wash. The car is centered between two large, rotating brushes that are part of the washing mechanism. The car's license plate reads 'MN AK 818'. The car wash structure is black with yellow safety markings. The Kärcher logo is prominently displayed at the top of the frame.

**KÄRCHER**

**STOP**

**STOP**

# PERFECT CARE PLUS PROFIT

Get the best out of your site with our  
CWB 3 Klean!Star gantry car wash.

**PROFESSIONAL** | GANTRY CAR WASHES

# SUSTAINABLE. CLEAN.

Everyone wants sustainable power. Simply because it's possible. As cars become increasingly environmentally friendly, so must gantry car washes. Like our CWB 3 Klean!Star.



**YOU CAN  
ACHIEVE  
MORE**

**LEVEL**

**UP**

In the vehicle cleaning sector, the decisive factor for success is productivity. When you increase your productivity, the direct consequence is that you also improve your operating result.

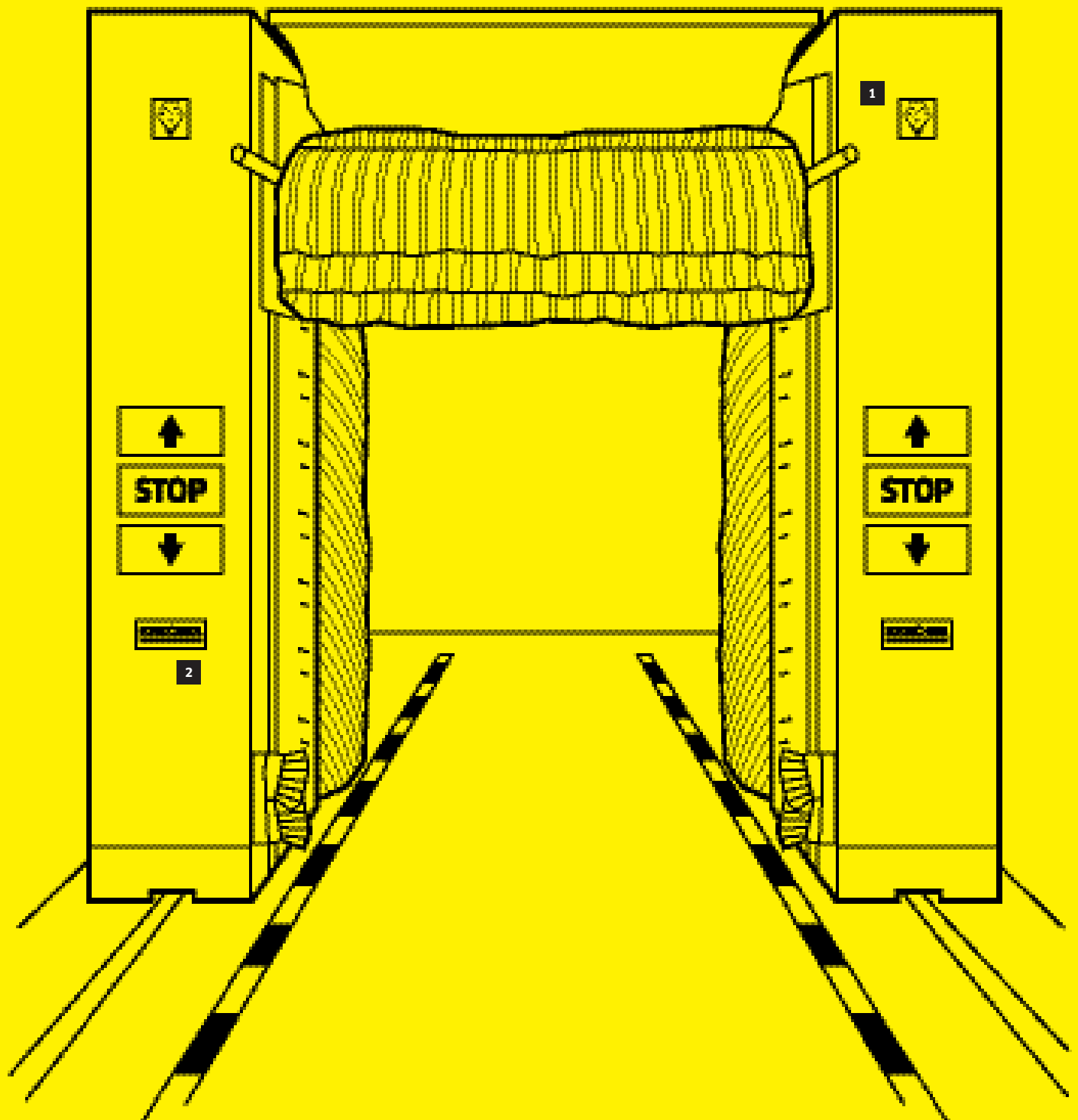
- **Consultation** Deciding on a vehicle cleaning system is more than just a decision in favour of a machine. We support you from site analysis to the marketing and communication concept to final installation. During this time, you can benefit from our international experience and extensive expertise.
- **A strong brand** We put the customer at the heart of all our thinking and action. Cleaning tasks should become easier, more comfortable and more efficient. Our aspiration: Kärcher makes a difference. In vehicle cleaning, we achieve this for you, above all, through innovative technology, sustainability and future-oriented services.
- **Machines and accessories** We are pioneers when it comes to high-pressure cleaning. Our systems are robust, powerful and economical. Our technology is sophisticated, reliable and proven. With our systems and versatile accessories, you are perfectly equipped for any task at all times.
- **Digital transformation** Digital applications are essential factors for success. We offer you innovative solutions with maximum cost-effectiveness and unparalleled comfort to increase customer satisfaction.
- **Cleaning agent** Effectiveness and productivity in vehicle cleaning are inextricably linked with the use of the correct cleaning agent. Only cleaning agents which are perfectly suited to system and customer requirements guarantee optimal results in the long term.
- **Financing** We offer you modern financing options in cooperation with well-known leasing partners with great flexibility and economy, to maintain liquidity and expand the scope for action of your business.
- **Service** Your system is installed and runs without a hitch. To ensure your system remains this way in the long term, we offer you ongoing support. Our service packages and Kärcher customer service and factory-trained service partners guarantee problem-free operation in the long term.
- **Sustainability and the environment** For many years, Kärcher has been the driving force for sustainability and environmental protection in cleaning technology. As a leading global provider of cleaning systems, we have the responsibility to develop durable products with which our customers can clean in a way that conserves energy and resources. They ensure not only maximum cleanliness but also value preservation. Without unnecessary harm to the environment.

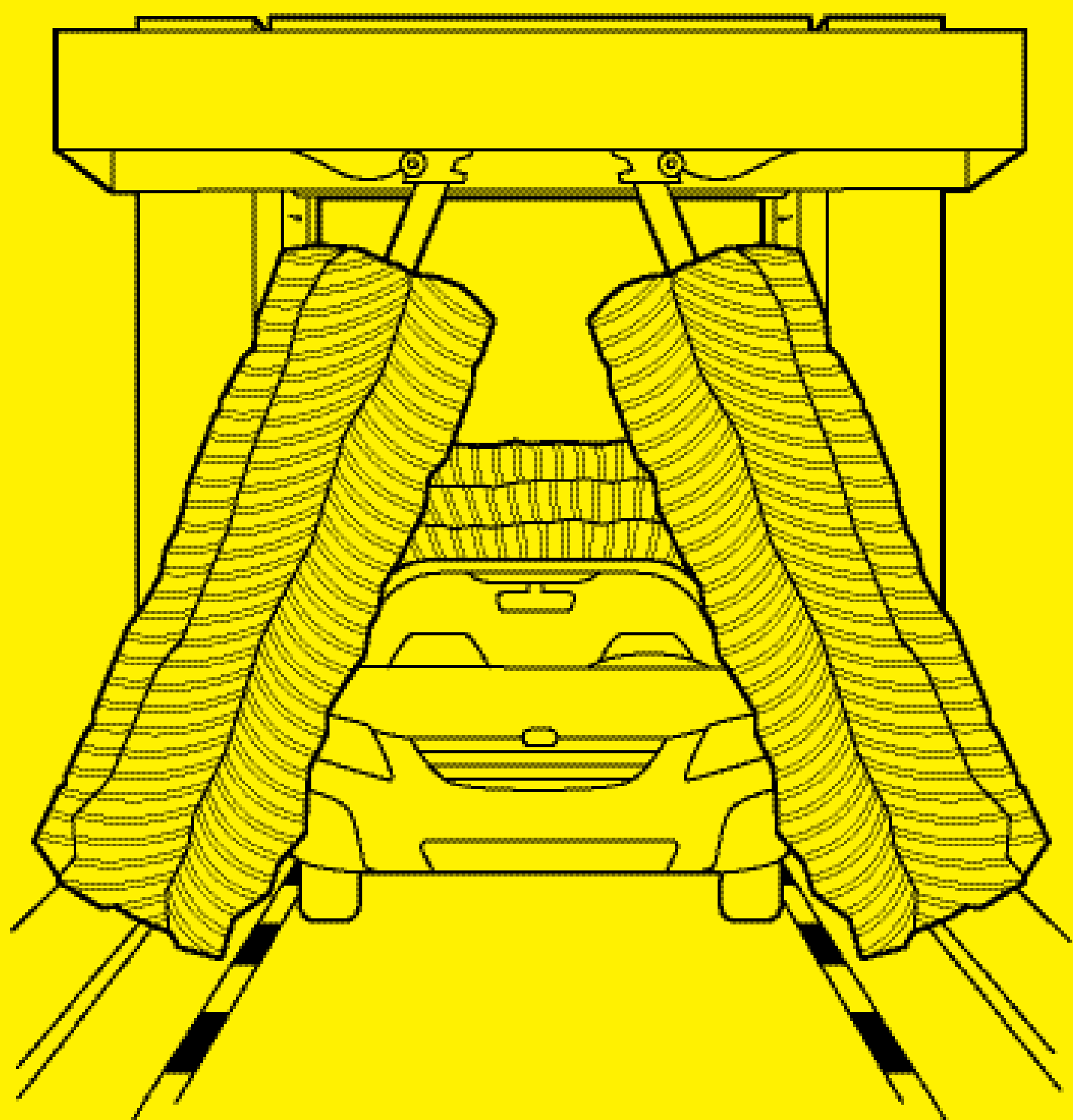
## DO YOU WANT TO FIND OUT MORE?

Follow this link on our website. Here, you will find all the information about vehicle cleaning with Kärcher.



Think bigger. More width at mirror and wheel height to make it easier to enter and exit. Optimal cost-effectiveness between entry and exit. Think Klean!Star.





# BETTER IN EVERY DIMENSION

- 1 K!Adjust** For the optimal use of your wash hall, you can set three different wash heights to a frame height. The roof brush follows gradually.
- 2 K!Design** The unmistakable design of advanced technology in black or four standard colours.



**Klean!Star  
MEANS MORE  
IN EVERY  
DIMENSION**

# MORE HIGH PRESSURE FROM ALL SIDES

Customised high pressure:  
choose the high pressure option suited to you.

**Wheel high pressure** You have the option to select the high pressure unit for the lower area from sills to mirrors.

**Wheel and side high pressure** With this option, wheel high pressure and side high pressure always work simultaneously. Your customers receive excellent cleaning results. You have lower costs.

**Roof high pressure** This option includes the pre-cleaning of the roof, front and rear area with a high pressure tube mounted at the roof drier. You have a choice of two variants depending on the roof drier system selected: roof high pressure with fixed nozzles or with nozzles that can be pivoted 30° forwards and backwards.

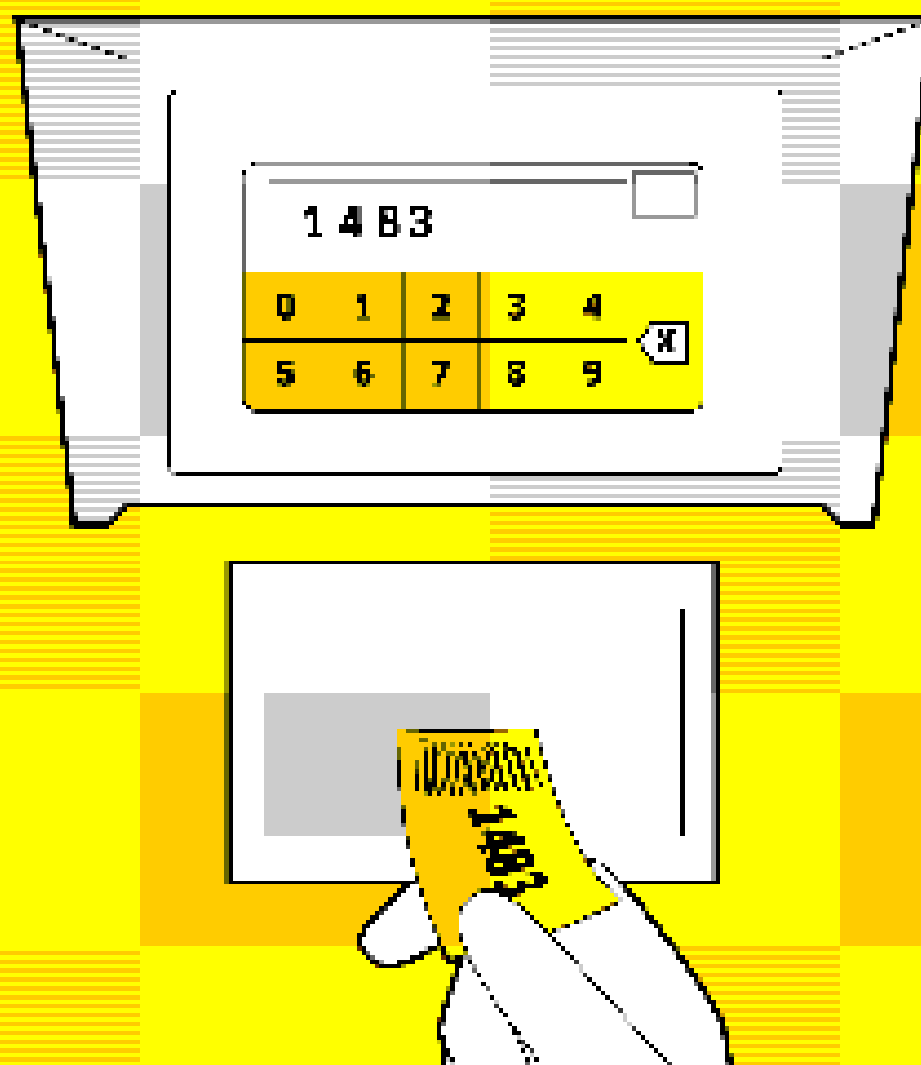


**Roof high pressure on separate arms** The high pressure mounted directly on the roof brush cleans in one pass together with the brush wash. Our recommendation for quick wash programmes.

**Underbody wash** There is scarcely a customer who doesn't take advantage of the thorough removal of dirt on the underbody of their vehicle. Additional revenue for you.

# ADJUSTABLE COMFORT

Stay in your car or get out? Drive in precisely and safely. That is our Drive-In system.





**Drive-In is a system specially designed for drive-through halls, based on the tried-and-tested starting device CR 214.** Your customer can decide whether to stay seated in their car or to get out. For this, they have to confirm the relevant safety information at the terminal.

If the customer wants to stay seated, they can drive into the gantry car wash that starts automatically. For safety reasons, a horn sensor with rotating beacon is installed – if the customer sounds their horn, the gantry car wash stops.

If the customer wants get out they can drive into the gantry car wash, get out and push the start button in front of the wash hall. As the operator, you can decide which version you want to offer – just drive-in or both.

This generates high throughput as it saves time. The next customer can already activate their wash programme at the terminal. It is also much more convenient for customers.





# INDIVIDUAL BUT IN SERIES PRODUCTION

The configurable cleaning and care programmes for your individual Klean!Star.

## Ex-works programmes

**Shampoo** VehiclePro Klear!Brush reliably removes stubborn dirt and during the brush wash it prepares the water film to be broken up in the drying process.

**Drying aid** VehiclePro Klear!Dry is optimally suited to the different driers in the Klean!Star and quickly breaks up the water film for fast drying and high throughput.

## Further programmes

**Active foam** The powerful and intensive VehiclePro Klear!Foam active foam, developed especially for Klean!Star, shortens washing times and increases throughput.

**Intensive pre-cleaning** VehiclePro Klear!PreWash effectively removes insect residue and salt deposits and optimally prepares the vehicle for further cleaning.

**Rim cleaner** Removes robust dirt such as tyre wear, burnt-on brake dust and road salt gently and effectively.

**Wax** VehiclePro Klear!Glow provides good protection against external influences and creates a brilliant gloss effect.

**Polish** Long-lasting, glossy conservation. Protects against external influences over several months.

# GENTLE. EFFECTIVE. PRECISE.

The side brushes on our Klean!Star reliably follow the shape of the bodywork, resulting in immaculate cleaning results.

**Gentle** CareTouch consists of a specially foamed polyethylene (PE). We chose CareTouch for the roof and side brushes of our Klean!Star to guarantee particularly gentle removal of dirt on the vehicle surface.

With the CareTouch Hybrid option, the lower side brushes are also equipped with PE. Alternatively, the gantry car wash can also be completely fitted with PE.

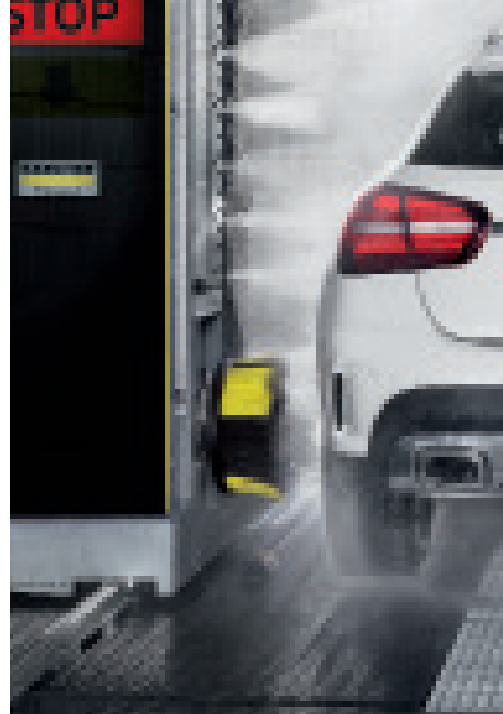
And we always recommend high pressure pre-cleaning.



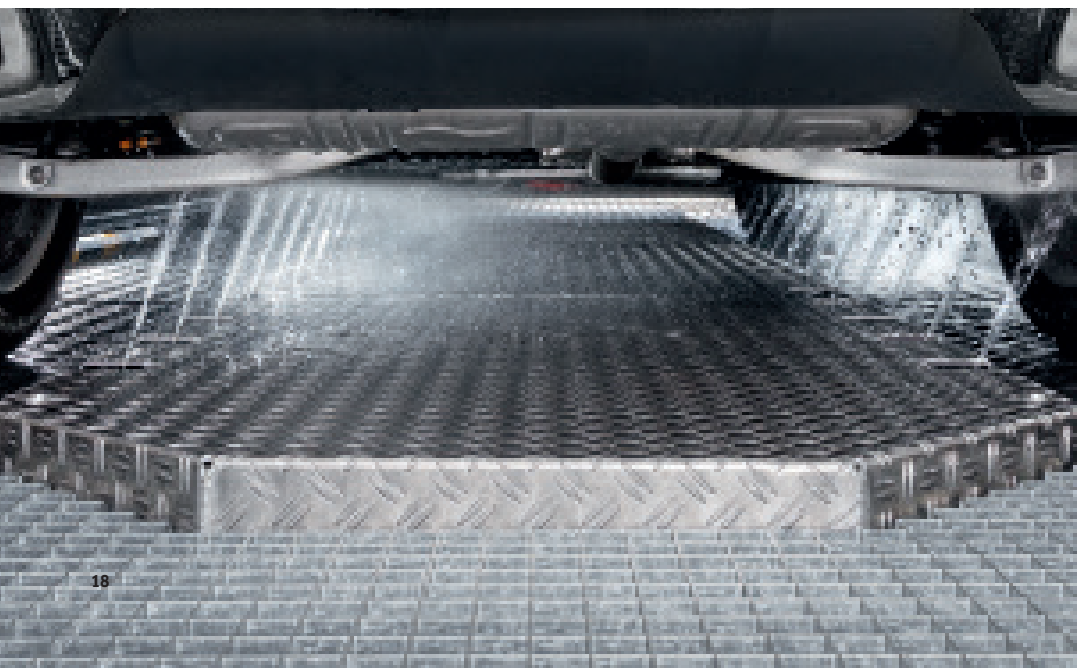
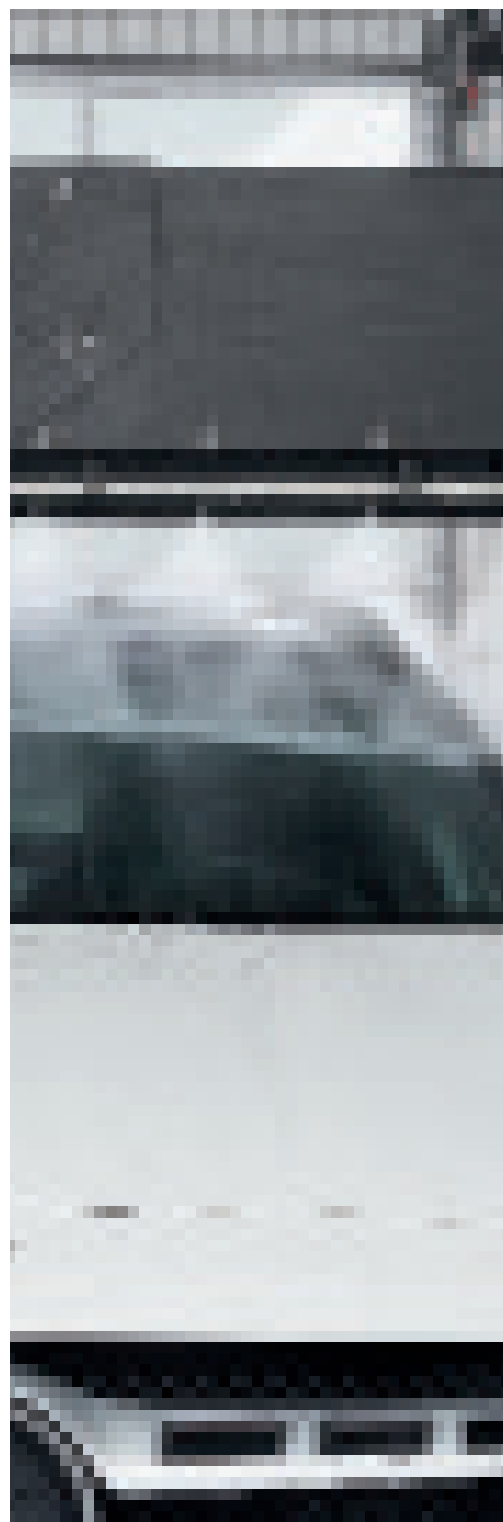


**Precise racks** permit a low-maintenance, highly precise positioning of the side brushes on the vehicle. And millimetres matter when it comes to gentle, perfect cleaning.

**Contour detection** In the forwards direction, the side brushes are placed at an angle of up to 15° diagonal to the vehicle so that the upper area is optimally detected and cleaned. In reverse mode, the side brushes move down accordingly to optimally clean the sill area.



**PROVEN.  
DIFFERENT.  
BETTER.**





# EFFECTIVE WHERE THE DIRT IS

The wheel wash has always been one of the greatest skills of the vehicle wash.





**Spokes in all possible shapes, deep 3D structures and all different wheel sizes pose a challenge.** Stubborn dirt, such as burnt-in brake dust and encrusted gritting salt, is another. Solve both problems with our wheel washes.

**No task is too big for us** With our Klean!Star, we are introducing a completely new principle to the wheel wash: the linear scissor wheel washer. It also reaches the wheels of

vehicles that are not positioned in the middle of the vehicle wash system. Even for vehicles with a narrow track width and small cars our scissor wheel washer always has a sufficient extension path.

Available as a disc wheel washer with or without high pressure, as well as a planetary wheel washer with high pressure and integrated wheelhouse cleaning.



## DO MORE WITH LESS



Every wheel wash unit needs a highly effective rim cleaner. VehiclePro Klear!Rim removes stubborn dirt such as burnt-in brake dust, tyre wear and encrusted gritting salt intensively and in a way that protects the materials.

- Does not damage uncoated concrete floors and steel
- Surfactant in accordance with EEC 648/2004 more than 90% biodegradable
- NTA-free





# CLEANLINESS IS NOT ENOUGH

The best wash result is nothing without good drying. There is a choice of two roof driers for your Klean!Star.

**Follows the angles of the contour** The  $\pm 30^\circ$  pivoted roof drier follows the contours of the vehicle. The result is even better and faster drying in the front and rear area. The equipment is also available with high pressure.

**Like before, only much better** Our roof drier produces results thanks to its high air flow volume, requires little space and can be fitted with high pressure.

# STRIKINGLY ATTRACTIVE

Show your customers at first glance that they can expect more from your Klean!Star.  
Lots more.





**When you have free choice, your Klean!Star is highly customised.** Perhaps you already like the Kärcher standard design just as it is. Or you can choose your favourite colour from four standard colours for the frame and doors. Then you can choose between two attractive front door designs.

It's entirely up to your taste, functionality and budget. The basic front doors fulfil all functions required without breaking the bank. For the front doors, you can choose a large, full LED traffic light, or alternatively, for the basic front doors, a traffic light with

a green and yellow arrow and STOP. This can be positioned on the left-hand side, right-hand side or on both sides for both these versions.

**Excitingly modern: K!Design** Are you a fan of design? Then you'll love K!Design, the unmistakeable design of advanced technology. A continuous, extensive colour style. High-quality acrylic backed with film. Exclusive Day and Night look in black or in one of four standard colours.

## OUR COLOUR RANGE

RAL 9003

RAL 5002

RAL 3000

RAL 7012

RAL 6017

The depictions of the RAL colours are not necessarily as they appear in reality.



**FASCINATING  
TECHNOLOGY.  
INSPIRING  
PERFORMANCE.**



Raw technical data cannot reveal everything about the actual capabilities of a gantry car wash. But they represent the potential of our Klean!Star.

- Modularity, flexibility, individuality
- Efficiency, throughput, profitability
- Use of up to six different cleaning agents, depending on the chosen cleaning and care options
- The optional empty signal shows the availability of each cleaning agent early on. This means you can always refill in good time.

#### CWB 3 Klean!Star

Wash height	m	2.10–2.90 (in 10 cm increments)
-------------	---	---------------------------------

#### Technical data

Voltage	V	400
Frequency	Hz	50
Number of current phases	Ph	3
Drive-through width at mirror level	m	2.45

# GET MORE DONE



## Start terminal

You issue a PIN or barcode. Your customer starts the system by entering the PIN code or by scanning the barcode at the terminal.



## Self-service vacuum cleaner

Our individually configurable SB VC self-service vacuum cleaner gives you maximum suction power, comfort, innovative design and additional sales.



## Mat Cleaner

Our Mat Cleaner cleans floor mats measuring up to 80 cm in width without water. This is 20 cm more than traditional mat cleaners manage.

Numerous options open up virtually unlimited possibilities for more success.



**Air Tower**

Here, your customers can check and adjust tyre pressure precisely up to 8 bar.



**Air Water Tower**

The addition of a water dispenser to the Air Tower, to re-fill windscreen washer fluid or cooling water.



**Perfume Tower**

Here, your customers neutralise unpleasant odours in the vehicle in an instant.

# DON'T JUST TALK



WRB Bio water reclamation system

Take action. Everyone's talking about environmental protection and sustainability. This is your and our contribution.

**WRB Bio water reclamation system** Water treatment through natural processes using micro-organisms results in outstanding reclaim water quality and saves up to 98% fresh water. Thanks to this high process efficiency and degradation capacity of the bacteria, almost all the water can be reused. Other benefits for you include compact design and lower service costs.

**WRP Car Wash water reclamation system** With this system you save up to 85% fresh water. It recycles oil-free waste water economically and effectively without flocculation chemicals. You can reuse the recycled water for all wash programmes. This modular and flexible system gives you the optimal solution for almost every site.



**WRP Car Wash water reclamation system**



# RESEARCHED. TESTED. SUCCESSFUL.





40 years of experience in chemicals development – our experts collaborate across disciplines in the research, development and testing of new cleaning agents and application methods. For the best result and safe application, the team have state-of-the-art laboratories and top research and testing facilities at their disposal.

**Through close collaboration with industrial customers and private users, our technologies are always setting new standards. Worldwide.**

**Top-level development** The new chemical laboratory is at the centre of the research and development of innovative cleaning and care agents. Our experts analyse every type of dirt on all surfaces so that they can be professionally removed, picked up and disposed of. Every product that is developed here for our industrial and private customers is created using holistic thinking from the very beginning, systematically and entirely at Kärcher.

**Sustainable right from the start** Meeting environmental standards is becoming increasingly important. This is why Kärcher places particular value on the sustainable selection of raw materials, the development and production process and the use of resource-conserving packaging solutions throughout the whole production chain.

**Made in Germany** Highest quality – Kärcher produces its own cleaning products in order to achieve consistently high quality, sustainable production and the best delivery capacity. In the highly flexible system, 0.5 litre-bottles and tankers with capacities of up to 20,000 litres can be filled promptly and very economically from 25,000-litre mixing drums.

**Perfect cleaning solution** Kärcher cleaning and care agents are just as versatile and powerful as the devices and machines in which they are used – because they are specially developed for use with Kärcher cleaning machines. The combination makes it possible: the effective interplay between machine and cleaning agent therefore guarantees optimal cleaning.



# PERFECT WITH THE RIGHT AGENTS



VehiclePro  
Klear!Prewash  
RM 890



VehiclePro  
Klear!Rim  
RM 896



VehiclePro  
Klear!Foam  
RM 892

## The Klear!Line cleaning agents for gantry car washes

**Tap the full potential** of your Klean!Star with the innovative cleaning agents from our VehiclePro Klear!Line:

- VehiclePro Klear!Prewash RM 890
- VehiclePro Klear!Rim RM 896
- VehiclePro Klear!Foam RM 892
- VehiclePro Klear!Brush RM 891
- VehiclePro Klear!Glow RM 894
- VehiclePro Klear!Dry RM 893

When you want the best for you and your customers put your trust in our VehiclePro Klear!Line.

- Latest generation of innovative cleaning agents
- Cost-saving for perfect results in optimal washing time
- Ultra-high concentrates, extremely economical in use and maximum cost-effectiveness
- Modern formulas and selected quality raw materials
- Perfect cleanliness and care
- Innovative Kärcher perfume concept with secure colour coding



**VehiclePro  
Klear!Brush  
RM 891**

**VehiclePro  
Klear!Glow  
RM 894**

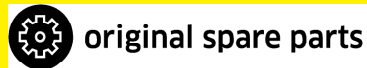
**VehiclePro  
Klear!Dry  
RM 893**

# THE RIGHT SOLUTION FOR EVERY JOB

By professionals for professionals: as a global market leader, Kärcher offers you a diverse range of top-class services, as well as innovative and customised solutions for your requirements. We are happy to help. Every time you need our support.



**All angles covered:** With our efficient solutions we help you achieve something great and become even better. Anywhere and anytime.



### original spare parts

**Strong in all parts:** Our spare parts represent value preservation and the usual strong cleaning performance at the Kärcher standard.



### all brands service

**Competent, reliable and fast:** for all machines. Use our Kärcher All Brands Service for the repair and maintenance of machines from other manufacturers.



### service app

**24/7 availability:** With the innovative Kärcher Service app, you can send all service messages quickly and precisely to Kärcher Service at any time.



### visual remote support

**The appropriate diagnosis via video call:** With the "SightCall" application a Kärcher employee is connected to your smartphone camera and gives you personal advice.



### cleaning consulting

**Increased productivity means better quality:** We optimise your cleaning processes and are happy to advise you with an individual and sustainable cleaning concept.



### financial solutions

**Tailored financing:** In cooperation with well-known leasing partners we offer a variety of individual financing solutions.



### service packages

**Regular, professional maintenance** reduces the risk of breakdown for your machine fleet, extends the service life of your machines and increases their current market value.



### service

**At Kärcher you can take customer proximity literally:** We provide expert help in the event of major faults or application problems – worldwide and at any time.

## MORE INFORMATION

Our support for your success: we are your reliable partner when it comes to cleaning.

More information about our top services can be found at **kaercher.com**



makes a difference

Please contact us for more information:

#### Head Office Germany

Alfred Kärcher SE & Co. KG  
Alfred-Kärcher-Straße 28-40  
71364 Winnenden

Phone +49 7195-14-0  
Fax +49 7195-14-2212

[www.kaercher.com](http://www.kaercher.com)

#### USA

Kärcher North America  
6398 N. Kärcher Way  
Aurora, CO 80019

Phone +1 800-444-7654  
Fax +1 866-271-0520

[www.karcherna.com](http://www.karcherna.com)

#### Canada

Kärcher Canada Inc.  
275 Pendant Drive  
Mississauga, Ontario L5T 2W9

Phone +1 905-364-5006  
Fax +1 905-672-3155

[www.karcher.ca](http://www.karcher.ca)

#### United Kingdom

Kärcher (UK) Ltd  
Kärcher House  
Brookhill Way  
Banbury  
Oxon OX16 3ED

Phone +44 1295-752-000  
Fax +44 1295-752-103

[www.karcher.co.uk](http://www.karcher.co.uk)

#### Ireland

Kärcher Ltd (Ireland)  
Unit 3, Redcow Retail Centre  
Robinhood Road  
Ballymount, Dublin 22  
D22 PY03

Phone +353 1-409-7777  
Fax +353 1-409-7775

[www.karcher.ie](http://www.karcher.ie)

#### South East Asia

Regional Head Office  
South East Asia

Kärcher South East Asia Pte Ltd  
3 Depot Close #05-01  
Singapore 109840

Phone +65 6897-1811  
Fax +65 6897-1611

[www.karcher.com.sg](http://www.karcher.com.sg)

#### Hong Kong

Kärcher Limited  
Unit 01, 22/F, Westley Square  
48 Hoi Yuen Road  
Kwun Tong, Kowloon

Phone +852 2-357-5863  
Fax +852 2-357-5632

[www.karcher.com.hk](http://www.karcher.com.hk)

#### Australia

Kärcher Pty Ltd  
385 Ferntree Gully Road  
Mount Waverley  
Victoria, AU 3149

Phone 1800 675-714  
(Free Call)

[www.karcher.com.au](http://www.karcher.com.au)

#### New Zealand

Kärcher Ltd  
66 Allens Road  
East Tamaki  
Auckland 2013

Phone +64 9-274-4603  
Fax +64 9-274-6932

[www.karcher.co.nz](http://www.karcher.co.nz)

#### North Africa

Kärcher SARL  
Immeuble Yasmine Tower  
Bloc A 6ème étage, bureau A 6.6  
Centre Urbain Nord  
1082 Tunis  
Tunisia

Phone +216 36339020

[info@tn.kaercher.com](mailto:info@tn.kaercher.com)

[www.kaercher.tn](http://www.kaercher.tn)

#### East Africa

Kärcher Limited  
Regus Fortis Office Park  
P. O. Box 66488-00800  
Block C, Ground floor  
Muthangari Drive  
Westlands, Nairobi  
Kenya

Phone +254 205148145

[info@ke.kaercher.com](mailto:info@ke.kaercher.com)

[www.kaercher.com/ke](http://www.kaercher.com/ke)

#### South Africa

Kärcher (Pty) Ltd  
Cnr Mount Joy &  
George Allen Rd  
Wilbart Ext. 2  
PO Box 11818  
Vorna Valley, 1686

Phone +27 11-657-7300  
Fax +27 11-657-7440

[www.karcher.co.za](http://www.karcher.co.za)

#### Middle East

Kärcher FZE  
Quality Cleaning Systems  
Jebel Ali Free Zone  
Plot No. S-10104 South Zone  
RA 08, XB 1, Jebel Ali  
Dubai

Phone +971 4-886-1177

Fax +971 4-886-1575

[customercare@ae.kaercher.com](mailto:customercare@ae.kaercher.com)

[www.karcher.ae](http://www.karcher.ae)

#### Qatar

Kärcher LLC  
Office No 133, Regus Building  
D Ring Road  
PO Box 35176

Phone +974 4-423-1319

[customercare@ae.kaercher.com](mailto:customercare@ae.kaercher.com)

[www.kaercher.ae](http://www.kaercher.ae)

#### Caribbean

Kärcher S.R.L.  
Calle 5ta, esq. Calle 18, Nave 1  
Villa Aura  
Santo Domingo Oeste  
Dominican Republic

Phone +1 809-379-3700  
Fax +1 809-379-3777

[info@do.kaercher.com](mailto:info@do.kaercher.com)

[www.kaercher.com/do](http://www.kaercher.com/do)