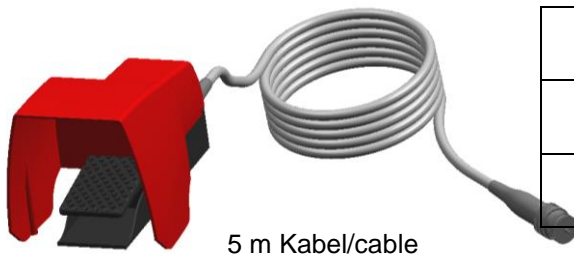
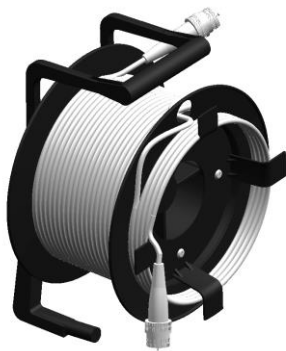


Elektrozubehör / Electric Accessories

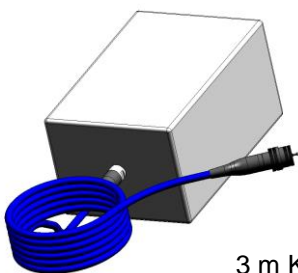


5 m Kabel/cable

Fußschalter Foot switch		Material-Nr. Material-No.	Gewicht ca. Weight appr.
2-Kanal 2-channel	i - IP65 i - IP65	9.889-511.0	1,5 kg
2-Kanal 2-channel	24 V DC - IP65 24 V DC - IP65	9.889-501.0	1,5 kg



Kabeltrommel Cable drum		Material-Nr. Material-No.	Gewicht ca. Weight appr.
mit 30 m Kabel with 30 m cable	i i	9.890-413.0	5,8 kg
mit 50 m Kabel with 50 m cable	i i	9.890-411.0	9,5 kg
mit 30 m Kabel with 30 m cable	24 V DC 24 V DC	9.890-412.0	4,9 kg
mit 50 m Kabel with 50 m cable	24 V DC 24 V DC	9.890-410.0	7,1 kg



3 m Kabel/cable

E-Exi Box Umwandler / Converter		Material-Nr. Material-No.	Gewicht ca. Weight appr.
Gerätespannung Unit voltage	Wasserwerkzeug Water tool		
von/from 12 V DC*	in/into i	9.889-539.0*	5,5 kg
von/from 24 V DC	in/into i	9.889-540.0	5,5 kg

*nur für Kompaktgeräte ET600/800, EC1000; EcoPro2500

*only to use for Compact Units ET600/800, EC1000, EcoPro2500