

KÄRCHER

makes a difference



EFFICIENT CLEANING SOLUTION

PROFESSIONAL | MINERAL - METALLURGY

HD 10/25-4 S

The HD 10/25-4 S cold water high-pressure cleaner in an upright construction style impresses with EASY!Force high-pressure gun, pressure switch control and Servo Control.



Order no.

1.286-902.0

- Save time and energy: EASY!Force high-pressure gun and EASY!Lock quick-release fasteners
- Water-cooled three-phase motor
- Maximum impact pressure for stubborn dirt

Technical data

EAN code		4054278158259
Supply voltage	Ph / V / Hz	3 / 400 / 50
Flow rate	l/h	500 - 1000
Inlet temperature	°C	60
Working pressure	bar / MPa	30 - 250 / 3 - 25
Max. pressure	bar / MPa	275 / 27.5
Connected load	kW	9.2
Weight (with accessories)	kg	68
Weight incl. packaging	kg	73.5
Dimensions (L × W × H)	mm	560 × 500 × 1090

Equipment

Spray gun		EASY!Force Advanced
High-pressure hose	m	10
Spray lance	mm	1050
Power nozzle		■
4-pole, three-phase motor with air and water cooling		■
3-piston axial pump		With ceramic pistons
Pressure switch-off		■
Integrated water fine filter		■
Electronic motor protection with LED display		■
Oil level indicator		■
Servo control		■
Brass water inlet		■

■ Included in the scope of supply.

Users must receive training on this device.



Save time and energy: EASY!Force high-pressure gun and EASY!Lock quick-release fasteners

- Fatigue-free work at last: the EASY!Force high pressure gun.
- EASY!Lock quick-release couplings: durable and robust. And five times faster than screws.



Proven Kärcher quality

- 4-pole water-cooled electric motor.
- Robust brass cylinder head and ceramic piston.
- Reinforced, unbreakable plastic chassis.



For increased safety

- Integrated electronics system for machine monitoring.
- Automatic switch-off in case of low voltage range or overvoltage.
- Switches off in case of leaks or phase failure.

HDS 10/20-4 M

The most powerful 3-phase hot water high-pressure cleaner in the Kärcher middle class: HDS 10/20-4 M Classic. With 4-pole, water-cooled electric motor, 2 cleaning agent tanks and lots more.



Order no.

1.071-905.0

- Economical eco:efficiency mode
- 2 cleaning agent tanks
- Three-phase motor: water-cooled

Technical data

EAN code		4054278140278
Supply voltage	Ph / V / Hz	3 / 400 / 50
Flow rate	l/h	500 - 1000
Working pressure	bar / MPa	30 - 200 / 3 - 20
Temperature (for supply 12 °C)	°C	min. 80 - max. 155
Connected load	kW	7.8
Consumption of heating oil or gas at full load	kg/h	6.4
Consumption of heating oil in eco:efficiency mode	kg/h	5.1
Power cable	m	5
Fuel tank	l	25
Weight (with accessories)	kg	167.3
Weight incl. packaging	kg	179.3
Dimensions (L × W × H)	mm	1330 × 750 × 1060

Equipment

Cleaning agent function		20 + 10 l tank
Spray gun		EASY!Force Advanced
High-pressure hose	m	10 / Longlife
Spray lance	mm	1050
Power nozzle		■
ANTI!Twist		■
Tanks for cleaning agents, calcification protection and fuel that can be filled from the outside		■
Control panel with display light		■
Pressure switch-off		■
Pole reverse plug (3~)		■
Service electronics with LED display		■
2 cleaning agent tanks		■
Dry-running protection		■

■ Included in the scope of supply.

Users must receive training on this device.



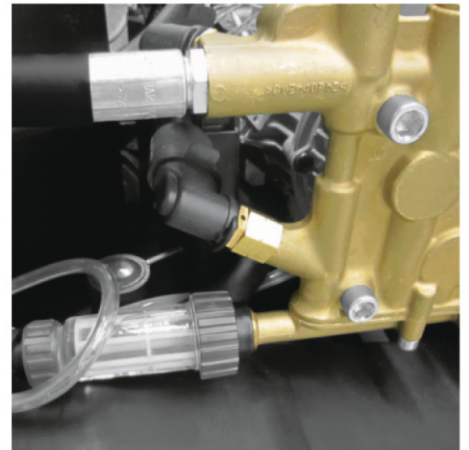
Efficiency

- In ecoefficiency mode, the machine operates in the most economical temperature range (60 °C) – with full water flow.
- The burner cycles are optimised to reduce fuel consumption by 20% compared to full-load operation.



Maximum efficiency

- Proven and highly efficient burner technology.
- 4-pole electric motor with 3-piston axial pump.
- Water-cooled motor for a high performance and long service life.



Operational safety

- The large, integrated water fine filter reliably protects the high-pressure pump against small dirt particles.
- The integrated exhaust gas thermostat switches off the drive motor if the emission temperature exceeds 300 °C.
- The Soft Damping System (SDS) compensates for vibration and pressure peaks in the high-pressure system.

KM 70/20 C

Compact push sweeper for indoor and outdoor use



Order no.

1.517-106.0

- Roller brush driven by both wheels
- Push handle adjustable in 3 positions
- Roller brush and side brushes continuously adjustable

Technical data

EAN code		4039784718029
Drive type		manual
Max. area performance	m ² /h	2800
Working width	mm	480
Working width with 1 side brush	mm	700
Tank volume, gross/net	l	42 / 20
Weight (with accessories)	kg	22
Weight, ready to use	kg	23
Package weight	kg	25.9
Packaging dimensions (L × W × H)	mm	795 / 400 / 935
Dimensions (L × W × H)	mm	1300 / 765 / 1035

Equipment

Fine dust filter	■
Sweeper drive, manual	■
Main sweeper roller adjustable	■
Foldable push handle	■
Dustpan principle	■
Outdoor use	■
Indoor use	■

■ Included in the scope of supply.



Main sweeper roller drive

- The main sweeper roller is driven by both wheels - for excellent results when turning to the left or right.



Adjustable push handle

- Excellent ergonomics thanks to three height positions.
- Foldable for space-saving storage.



Large dirt hopper

- Ergonomic container handle for easy handling and emptying.

KM 100/100 R BP

Comfortable, modern ride-on sweeper for professional use indoors and outdoors for areas from 6,000 m²/h to 7,800 m²/h.



Order no.

1.280-103.0

- Automatic filter cleaning system
- Electric traction drive
- Emission-free operation

Technical data

EAN code		4039784468573
Traction drive		DC motor
Drive- performance	V / kW	24 / 2.1
Drive type		Electric
Max. area performance	m ² /h	6000
Max. area performance with 2 side brushes	m ² /h	7800
Working width	mm	700
Working width with 1 side brush	mm	1000
Working width with two side brushes	mm	1300
Battery capacity	Ah	240
Battery voltage	V	24
Battery runtime	h	max. 2.5
Waste container	l	100
Climbing ability	%	18
Working speed	km/h	6
Filter areas	m ²	6
Weight (with accessories)	kg	320
Weight, ready to use	kg	300
Dimensions (L × W × H)	mm	2006 × 1005 × 1343

Equipment

Polyester round filter	■
Filter cleaning manual	■
Filter cleaning automatic	■
Main sweeper roller, floating	■
Suction volume regulation	■
Coarse dirt flap	■
Overhead sweeping principle	■
Forwards traction drive	■
Backwards traction drive	■
Suction	■
Outdoor use	■
Indoor use	■
Battery indicator	■
Elapsed time counter	■
Sweeping function, can be switched off	■
Wheels, non-marking	■

■ Included in the scope of supply.

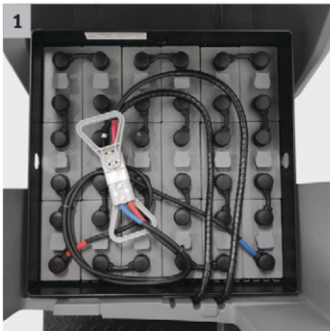
Users must receive training on this device.

KÄRCHER



BD 90/160 R Classic Bp

Simple to operate, user-friendly and very reliable: Our new scrubber drier BD 90/160 R Classic Bp provides high functionality with an optimum price/performance ratio.



1 Large battery compartment to hold a 300 Ah battery

- Enables uninterrupted work for up to 6 hours.
- High cleaning performance per battery charge.

2 High suction power (700 watts)

- Reduces residual water on cleaned areas.
- High suction power for dry floors.

3 Anti-skid wheels

- Prevents slipping on wet floors.
- Increases safety for the user.

4 Ergonomic design, designed for the Asian market.

- Steering wheel and seat can be adapted to the user.
- Maximum flexibility.

TECHNICAL DATA AND EQUIPMENT



BD 90/160 R Classic Bp

Technical data

Order no.	1.246-041.0	
EAN code	4054278680743	
Brush working width	mm	900
Working width, vacuuming	mm	1200
Fresh/dirty water tank	l	160 / 160
Theoretical area performance	m ² /h	5400
Brush speed	rpm	100-190
Brush contact pressure	g/cm ²	-30 /
Battery voltage	V	36
Battery capacity	Ah	300
Weight (with accessories)	kg	370
Dimensions (L × W × H)	mm	1740 × 970 × 1445

Equipment

Disc brush	■
Powerful traction drive	■
Automatic water stop	■
Dose	-
Parking brake	■
Adjustable steering wheel	■
Solenoid valve	■
2-tank system	■

■ Included in the scope of supply.

CITY SWEEPER MCM 600

With the MCM 600 vacuum sweeper, municipalities and industry have a system for all sweeping requirements – particularly when high sweeping capacities without dust dispersion are required.



Order no.

1.999-052.0

- Synchronised all-wheel steering
- Ergonomic and comfortable cab
- Patented hydraulic system
- All driving and operating functions are easy to operate
- Hydrostatic, electronically controlled drive with load sensing

Technical data

Drive type		Diesel
Drive- performance	(kW/hp)	115 / 156
Diesel particulate filter		yes
Emissions standard		Euro 6
max. Speed	(km/h)	40
Working speed	(km/h)	20
Climbing ability	(%)	25
Working width with two side brushes (mm)		3600
Waste container	(l)	6000
Fresh water tank	(l)	500
Emptying height	(mm)	1340
Turning radius	(mm)	5100
Weight, empty	(kg)	8300
Total permissible weight	(kg)	13000
Dimensions (L x W x H)	(mm)	5400 x 2050 x 2920

Equipment

- Waste container: 6000 l
- Water tank: 500 l
- Included in the scope of supply.

Users must receive training on this device.

DRY ICE BLASTER IB 7/40 Classic

The Ice Blaster IB 7/40 Classic is a high-performance dry ice blaster that impresses in hard daily use with secure and convenient handling, easy manoeuvrability and reliable operation.



Order no.

1.574-001.0

- Clear display
- Automatic residual ice discharge
- Integrated oil and water separator

Technical data

Connected load	(kW)	0.6
Compressed air connection		Claw coupling (DIN 3238)
Casing / frame		Stainless steel (1.4301)
Air pressure	(bar/MPa)	2 - 10 / 0.2 - 1
Air quality		Dry & oil-free
Air flow	(m ³ /min)	0.5 - 3.5
Sound pressure level	(dB(A))	99
Dry ice capacity	(kg)	15
Dry ice pellets (diameter)	(mm)	3
Dry ice consumption	(kg/h)	15 - 50
Number of current phases	(Ph)	1
Frequency	(Hz)	50 - 60
Voltage	(V)	220 - 240
Weight without accessories	(kg)	93
Weight (with accessories)	(kg)	75
Dimensions (L x W x H)	(mm)	768 x 510 x 1096

Equipment

- Grease for nozzle threads
- Grease for nozzle threads
- Flat jet nozzle
- Open-end wrench (for changing nozzles): 2 piece(s)
- Spray hose with electrical control cable and quick coupling
- Jet gun (ergonomic and safe)
- Electronic control system
- Oil and water separator
- Tool bag

■ Included in the scope of supply.

Users must receive training on this device.



Clear display

- Easy to read off the values set; ease of operation thanks to large buttons and electronic control system.



Automatic residual ice discharge

- The ability to empty the residual ice tank at the touch of a button prevents the device from icing up once work is complete.



Integrated oil and water separator

- No icing up of the device.

KM 120/250 R D CLASSIC

The KM 120/250 R D Classic is an entry-level machine in the industrial sweepers class. It is robust, low-consumption, powerful and fitted with full hydraulic diesel traction drive.



Order no.

1.186-000.0

- Robust steel chassis for tough industrial applications
- Simple brush roller replacement without tools
- Large pocket filter for dust-free work in dusty environments

Technical data

EAN code		4054278328027
Drive type		Diesel
Traction drive		Four-stroke engine
Motor manufacturer		Yanmar
Drive- performance	kW	15.8
Max. area performance	m ² /h	10800
Working width	mm	900
Working width with 1 side brush	mm	1200
Working width with two side brushes	mm	1500
Waste container	l	250
Climbing ability	%	18
Working speed	km/h	9
Filter areas	m ²	6
Weight (with accessories)	kg	883
Weight, ready to use	kg	800
Weight incl. packaging	kg	883
Dimensions (L × W × H)	mm	2082 × 1250 × 1450

Equipment

Pocket filter	■
Filter cleaning manual	■
Main sweeper roller adjustable	■
Main sweeper roller, floating	■
Power steering	■
Suction volume regulation	■
Dustpan principle	■
Forwards traction drive	■
Backwards traction drive	■
Suction	■
Hydr. high dump	■
Outdoor use	■
Elapsed time counter	■
Sweeping function, can be switched off	■
Wheels, solid rubber	■
Side brush, automatically swings out	■

■ Included in the scope of supply.

Users must receive training on this device.

HD 9/50-4 CAGE

This product uses up to 500 bar of pressure to remove even the most stubborn dirt. The robust cage design provides all-round protection and enables safe crane loading. With sack-trolley principle for easy transportation.



Order no.

1.367-156.0

- Robust industrial gun
- Dry run protection (optional)

Technical data

EAN code		4039784731011
Working pressure	bar / MPa	150 - max. 500 / 15 - max. 50
Flow rate	l/h	500 - 900
Inlet temperature	°C	max. 60
Fuel		Electric
Engine rating	kW	15
Supply voltage	Ph / V / Hz	3 / 400 / 50
Pump type		Maximum performance Kärcher crankshaft pump
Weight without accessories	kg	150
Weight (with accessories)	kg	195
Dimensions (L x W x H)	mm	930 x 800 x 920

Users must receive training on this device.

Equipment

High-pressure hose	m	10 / Heavy duty
Spray gun		Industrial trigger gun
Stainless steel spray lance	mm	700
Flat jet nozzle		■
Safety valve		■
Elapsed time counter		■

■ included in the scope of supply.



High-performance crankshaft pump

- Reliable and durable Kärcher high-performance crankshaft pump ensures optimal pressure.



Safe storage

- Accessories and tools are stored in a protected compartment. This means that everything is always in its place.

HD 18/50-4 CAGE ADV

The most powerful machine in our UHP compact class: The compact HD 18/50-4 Cage Advanced with automatic pressure relief valve and maximum flexibility for a wide range of applications.



Order no.

1.367-162.0

- Automatic pressure relief
- Booster pump (optional)
- Water shortage protection as standard

Technical data

EAN code		4054278223353
Working pressure	bar / MPa	max. 500 / max. 50
Flow rate	l/h	1800
Inlet temperature	°C	max. 60
Fuel		Electric
Engine rating	kW	30
Supply voltage	Ph / V / Hz	3 / 380 / 415 / 50
Pump type		Crankshaft
Weight without accessories	kg	307
Weight (with accessories)	kg	321.3
Weight incl. packaging	kg	328.7
Dimensions (L × W × H)	mm	747 × 1317 × 1093

Users must receive training on this device.

Equipment

High-pressure hose	m	20 / Heavy duty
Spray gun		Industrial trigger gun
Stainless steel spray lance	mm	700
Flat jet nozzle		■
Safety valve		■
Elapsed time counter		■

■ Included in the scope of supply.



Pressure relief valve

- The pressure relief valve reduces the pressure in the hose, so it remains flexible when the trigger gun is closed.
- Prevents any sudden recoil for the user, as the pressure is built up slowly when pulling the trigger gun.
- Significant improvement in handling, for example, makes it easier to switch between working areas.



Outstanding mobility

- Large wheels, as well as an optimum centre of gravity secure a high degree of mobility for the machine - despite its size.
- A practical crane hook allows simple transport, also over rough terrain.

HD 13/35-4 CAGE

This product uses up to 350 bar of pressure to remove even the most stubborn dirt. The robust cage design provides all-round protection and enables safe crane loading. With sack-trolley principle for easy transportation.



Order no. 1.367-154.0

- Robust industrial gun
- Dry run protection (optional)

Technical data

EAN code		4039784730984
Working pressure	bar / MPa	100 - max. 350 / 10 - max. 35
Flow rate	l/h	500 - 1300
Inlet temperature	°C	max. 60
Fuel		Electric
Engine rating	kW	15
Supply voltage	Ph / V / Hz	3 / 400 / 50
Pump type		Maximum performance Kärcher crankshaft pump
Weight without accessories	kg	160
Weight (with accessories)	kg	195
Dimensions (L × W × H)	mm	930 × 800 × 920

Users must receive training on this device.

Equipment

High-pressure hose	m	10 / Heavy duty
Spray gun		Industrial trigger gun
Stainless steel spray lance	mm	700
Flat jet nozzle		■
Safety valve		■
Elapsed time counter		■

■ Included in the scope of supply.

Please contact us for more information:

Ahmedabad

Regus Business Centre,
Office No-314,
East Wing B Wing Privilon,
3rd Floor, S.G. Highway.
Ahmedabad-380 054
Gujarat

Hyderabad

Office No 446,448,449,
1-10-39 to 44,
Level 4-5, Gumidell,
Commercial Complex.
Old Airport Road, Begampet,
Hyderabad-560 016.
Telangana

Kochi

Awfis Space Solutions,
Mezhukkattil Matrix,
Chittoor Road,
Shenoys, Mullassery
Canal Junction, Ernakulam
Kochi- 682011

Noida

A-42/4, Sector-62
Noida-201 309,
Uttar Pradesh

Bengaluru

504 Stage, 4th Block, 1st.
100ft Outer Ring Road
(Service Road), HBR Layout
(Near Vijaya Bank).
Bangalore-560 043,
Karnataka

Indore

Regus - 718,
7th Floor,
Maloo - 01 Near Velocity,
Ring Road Indore - 452010
Madhya Pradesh

Kolkata

4th Floor,
Shree Manjari Building,
8/1A. Sir William
Janes Sarani
Kolkata-700071.
West Bengal

Pune

Regus Platinum Towers
Office No. 836, 8th Floor
1 Naylor Road,
Pune-411001.
Maharashtra

Chandigarh

Office No-433, Level-4,
Tower A, Godrej eterna,
Plot number 70.
Industrial Area Phase-1
Chandigarh-160 002

Jaipur

Office NO.605, 6th floor.
Tonk Road & 82
Bypass Junction,
Sector B-4, Near Airport,
Jaipur-302018.
Rajasthan

Mumbai

A 206 & B 009.
Punit Industrial Estate,
TTC industrial Area,
Thane Belapur Road,
Turbhe,
Navi Mumbai-400 705.
Maharashtra

Vadodara

CS, 3rd Floor,
Alembic 1965.
Alembic City,
Gorwa-Alembic Road,
Vadodara 390 003.
Gujarat

Chennai

No. 54.
Alappakkam Main Road,
Maduravoyal,
Chennai 600 095

Jamshedpur

Office No JSP-01
Fair deal Complex,
1st Floor, Main Road,
Bistupur,
Jamshedpur-831.001.
Jharkhand

Gurugram

GF-147-E Block,
Sushant Shopping Arcade,
Sushant Lok-1,
Gurugram -122002,
Haryana



Facebook



Instagram



LinkedIn



Twitter



Youtube