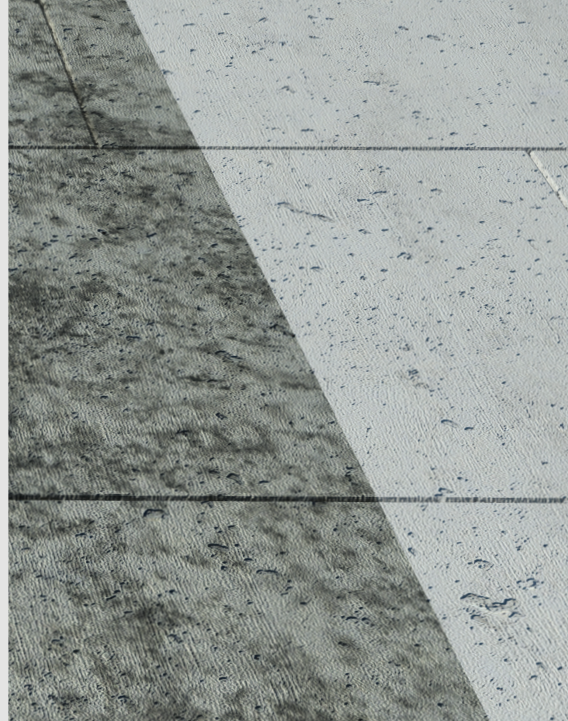
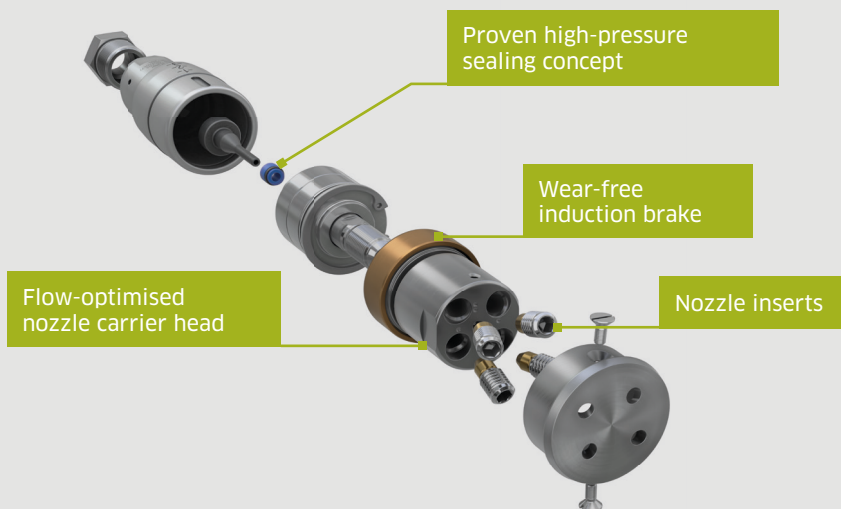




WOMA® TURBO NOZZLE COMPACT TD-C

ERGONOMIC - LIGHT - COMPACT

Ideal for space restricted environments, impresses with low vibration emission.



TURBO NOZZLE COMPACT TD-C



Speed regulation
via magnetic field-oriented induction brake

The TD-C is used for industrial cleaning, surface treatment and removal tasks and is designed for a pressure from 500 bar to 3,000 bar and a maximum nominal flow rate of max. 45 l/min.

The TD-C is a lightweight and compact alternative to the existing TD-3000 SCS series. In direct comparison, the dimensions and weight have been reduced. The nozzle can therefore also be used in confined cleaning environments and impresses with its low vibration emissions.

Advantages at a glance:

- Optimised with substantially reduced dimensions
- 3-stage speed setting via intuitive slider control
- Speed regulation via magnetic field-oriented induction brake, wear-free and without friction loss
- Nozzle carrier head with hydraulic self-drive through adjusted nozzle openings
- Easy maintenance and short set-up times - no special tools required.

Application and areas of use:

- From 500 bar cleaning of surfaces, e.g. graffiti removal
- From 1,000 bar treatment of surfaces, e.g. roughening
- From 2,500 bar removal of surfaces, e.g. concrete removal

Technical Data

Operating pressure	500 - 3,000 bar
Nominal flow rate	max. 45 l/min
Temperature of medium	max. 95 °C
Weight	1.2 kg with nozzle carrier head 0.9 kg without nozzle carrier head
Dimensions	174 mm x 54mm
Number of nozzles	max. 4
Thread	9/16" - 18 UNF



**VIDEO: Learn more
about the new TD-C.**