



WOMA[®] TANKMASTER TANK CLEANING HEADS

Professional tank and vessel cleaning with a system.



Up to 1,500 bar and up to 400 l/min

Hermetically sealed (under operating pressure)

Easy reproducible speed adjustment

Compact design

Particularly dense blasting pattern

Wear-free eddy current brake

(TANKMASTER L-1500)

INDUSTRIAL TANK AND VESSEL CLEANING FOR THE HIGHEST REQUIREMENTS

Decades of experience: industrial cleaning solutions from a single source

Oil, grease, caking or deposits? The WOMA TankMaster series offers a wide range of applications for all areas in which tanks and vessels of all kinds need to be cleaned efficiently.

Durability, easy handling and optimum cleaning results characterise the TankMaster tank cleaning heads from WOMA. The excellent blasting and cleaning pattern is achieved by a unique gear ratio. With the wear-free eddy current brake, the rotation speed can be adjusted quickly and easily at any time.

Proven sealing systems, hardened gears and high-strength stainless steel for the housing and all high-pressure parts ensure a long service life and reliability in harsh industrial cleaning environments.

The numerous optionally available accessories, customised to your requirements, ensure efficient and economical internal vessel cleaning.

WOMA pump units and industrial cleaning solutions are in daily use worldwide in the most diverse applications and under the toughest conditions.

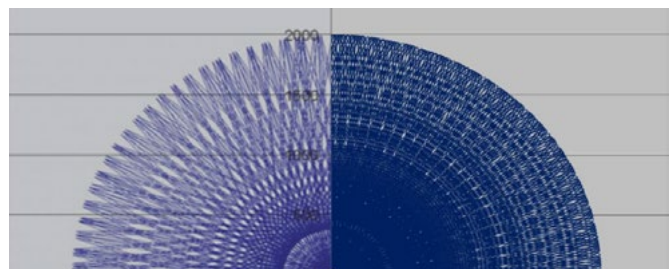
PERFECT CLEANING RESULTS WITH ENGINEERING AND SYSTEM

Advantages and features of WOMA tank cleaning heads

Characteristics	Advantages
Various tank cleaning heads and rotors available	The right tank cleaning solution for almost every application
Large selection of accessories - always the right configuration	Quick and easy adaptation to vessel geometries and requirements
Suspension with a hose possible - without a positioning device	High flexibility of use, low tendency to vibrate
Dense blasting and cleaning pattern	Excellent cleaning results in vessels and tanks
Fast cleaning thanks to a unique gear ratio	Short downtimes of your production plant, high energy efficiency, optimised water consumption
Suitable for cold and hot water up to 95°C (except TankMaster 500/200 EX)	High flexibility, depending on soiling and requirements
Speed adjustment: quick and easy at any time using the wear-free eddy current brake	Easy and quick adjustment of the rotor speed for changing cleaning requirements
High stability and durability thanks to high-strength stainless steels	Corrosion-resistant, suitable for harsh operating environments

The right solution with our experience

Do you need advice and support for your application? Our application engineering experts can draw on decades of cross-industry experience and will find the right tank cleaning product solution for your task.



Left: Blast pattern of a conventional tank cleaning tool
Right: WOMA TankMaster S 1500/SL 1500/ 500-200EX/L 1500

The WOMA TankMaster offers a dense blast pattern for clean and efficient tank cleaning.

TANKMASTER 500/200 EX



For potentially explosive areas

- Developed for use in potentially explosive areas with the labeling II 2G Ex h IIC T4 Gb and II 2D Ex h IIC T135°C Db
- Speed adjustment: quick and easy at any time via the wear-free eddy current brake
- Long service life
- Compact design
- Suitable for a wide range of tank and vessel sizes thanks to various rotors and nozzles

Technical data

Operating pressure (max.)	500 bar
Volume flow rate (max.)	200 l/min
Medium temperature (max.)	70°C
Smallest required opening	Ø 128 mm
Weight (without rotor)	ca. 13 kg
Dimensions (L × W × H)	95 × 124 × 440 mm

TANKMASTER S-1500



Compact and powerful

- Developed for high-pressure internal cleaning of tanks and vessels, especially for cleaning autoclaves in the chemical industry
- Speed adjustment: quick and easy at any time via the wear-free eddy current brake
- Long service life
- Suitable for a wide range of tank and vessel sizes thanks to various rotors and nozzles
- Numerous optional accessories available

Technical data

Operating pressure (max.)	1,500 bar
Volume flow rate (max.)	200 l/min
Medium temperature (max.)	95°C
Smallest required opening	Ø 128 mm
Weight (without rotor)	ca. 13 kg
Dimensions (L × W × H)	96 × 124 × 338 mm

TANKMASTER SL-1500



Lightweight, compact and powerful

- Compact design, optimised weight
- Developed for high-pressure internal cleaning of tanks and vessels, especially for cleaning autoclaves in the chemical industry
- Speed adjustment: quick and easy at any time via the wear-free eddy current brake
- Long service life
- Suitable for a wide range of tank and vessel sizes thanks to various rotors and nozzles
- Numerous optional accessories available

Technical data

Operating pressure (max.)	1,500 bar
Volume flow rate (max.)	200 l/min
Medium temperature (max.)	95°C
Smallest required opening	Ø 130 mm
Weight (without rotor)	ca. 9 kg
Dimensions (L × W × H)	96 × 124 × 336 mm

TANKMASTER L-1500



For large tanks and vessels

- Hermetically sealed (under operating pressure)
- Developed for high-pressure internal cleaning of large tanks and vessels, especially autoclaves in the chemical industry
- Speed adjustment: quick and easy at any time via the wear-free eddy current brake
- Good reproducibility of the brake position thanks to 10 brake stages
- Long service life
- Suitable for a wide range of tank and vessel sizes thanks to various rotors and nozzles
- Numerous optional accessories available

Technical data

Operating pressure (max.)	1,500 bar
Volume flow rate (max.)	400 l/min
Medium temperature (max.)	95°C
Smallest required opening	Ø 185 mm
Weight (without rotor)	ca. 25 kg
Dimensions (L × W × H)	117 × 178 × 413 mm

POSITIONING SYSTEMS AND ACCESSORIES

Perfectly equipped with the right accessories

A wide range of accessories for internal cleaning of all tank and vessel types of almost any shape and size – even when accessibility is limited. WOMA offers a harmonised tank cleaning system solution.

- Positioning devices for manhole openings and decentralised service openings
- Different degrees of automation
- Full flexibility thanks to a wide range of attachments and accessories:
 - Stabilisation and positioning devices
 - Extension arms
 - Rotors
 - Stop and rotor protection devices

Further accessories are available on request.



Large pipe cleaning

The TankMaster series can also be used for large pipe cleaning applications. The combination of a TankMaster and a WOMA pipe cleaning carriage enables both vertical and horizontal cleaning of large pipes.



*With the WOMA positioning devices, the TankMaster can be optimally positioned in the tank.

EXAMPLES OF APPLICATION

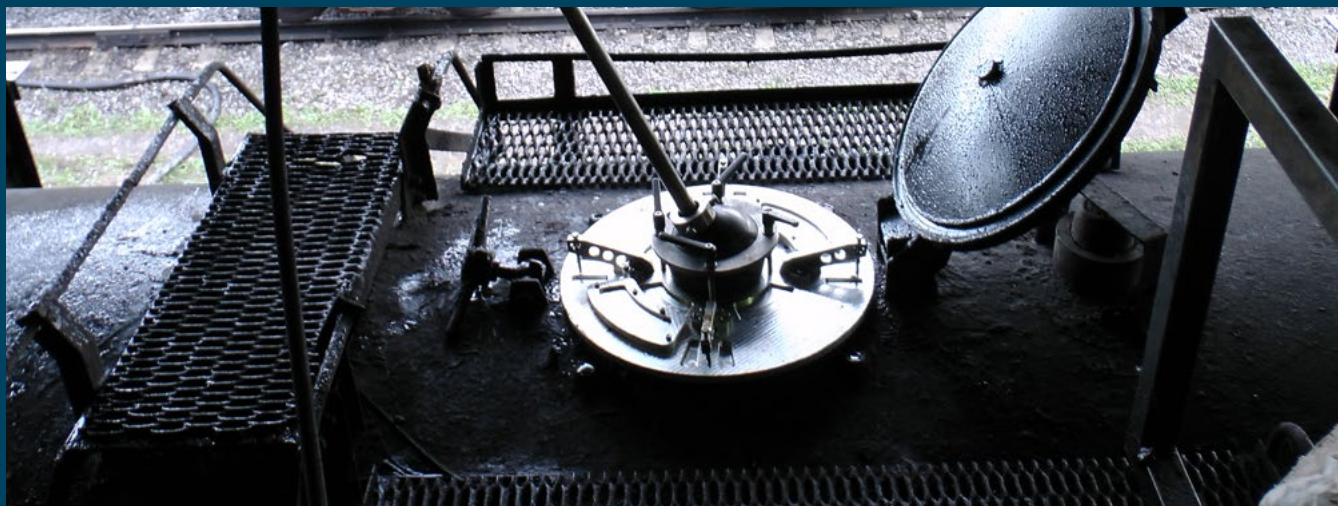
In daily use in a wide range of branches and industries.

Cleaning and maintenance is of central importance for tank care. Quick and thorough cleaning of storage tanks, reactor tanks, etc. is crucial to minimise disruption to the production process.

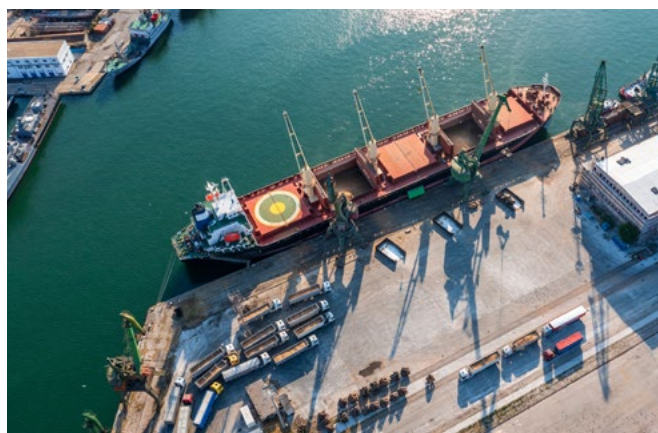
The variety of different tank designs is a challenge when cleaning the inside: size, diameter, material,

horizontal or vertical alignment, number, position and size of the openings, structure and size of the agitator.

Tank cleaning heads from the WOMA TankMaster series are the modern answer to all internal tank cleaning challenges.



High-pressure water jetting is a gentle yet effective method for removing all types of contamination in tanks and vessels, even in hidden corners.



The requirements for **internal tank cleaning** in a wide range of industries are diverse and as varied as the countless customisation options of the TankMaster series.



WHATEVER THE TASK. WE HAVE THE SOLUTION.

WOMA GmbH
Werthausen Straße 77-79
47226 Duisburg

P: +49 2065 304 0
F: +49 2065 304 200

info@woma.karcher.com
www.woma-group.com