

The Kärcher logo, consisting of the word "KÄRCHER" in a bold, sans-serif font, with a yellow horizontal bar underneath it. The background of the entire advertisement is a photograph of a warehouse interior. In the background, there are tall metal shelving units filled with various boxes and pallets. In the middle ground, a person wearing a black beanie, a dark jacket, and an orange safety vest is operating a grey Kärcher ride-on sweeper. The sweeper has a yellow brush at the front and is moving across a concrete floor. In the foreground, there is a large, detailed close-up of the front of the sweeper, showing the steering wheel, the operator's seat, and two large yellow brushes. The overall scene is well-lit, typical of a warehouse environment.

KÄRCHER

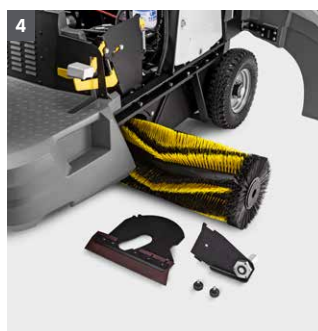
SWEEP EASY.

Maximize productivity and clean any environment
the KM 100/120 R BP is customizable and user-friendly.

PROFESSIONAL | KM 100/120 R BP RIDE-ON SWEEPER

THIS CONFIGURABLE RIDE-ON SWEEPER IS DESIGNED TO MINIMIZE YOUR TOTAL COST OF CLEANING.

Featuring a floating main roller brush system for exceptional sweeping results, the battery powered KM 100/120 R Bp ride-on sweeper achieves a high productivity rate on one charge, while emitting zero emissions. The traction drive sweeper is perfect for larger cleaning tasks whether they are indoors or out. The side brush is retractable to prevent damage, and has an adjustable speed control for dusty areas to protect the user's health. The sweeper features a large (65 square feet) self-cleaning filter to handle very dusty applications, and a spacious 31.7-gallon debris container with hydraulic high dump functionality. Control elements are conveniently positioned and user-friendly, and the adjustable driver's seat provides excellent visibility. Maintenance is a breeze with easily accessible parts, and no tools are required to change the filter or roller brush. For added customization, the KM 100/120 R can be equipped with an optional protective roof or vacuum holder.



1 Clean for long periods with easy debris disposal

- Debris container holds up to 31 gallons of dirt.
- Easy waste disposal due to the hydraulic container emptying high dump (>4ft 11in).
- Up to 3.5 hours of runtime with a fully charged battery.

2 Easy operation, high productivity

- Operator functions are color coded yellow.
- Working speed of 4.35 mph results in higher productivity.
- Convenient operation with logically linked function.

3 Retractable, adjustable side brush

- Able to reduce side brush speed in dusty areas to avoid rising fine dust and protecting the user's health.
- Bring the side brush in a secure position to prevent damage to the brush and the building.

4 Easy maintenance access saves time and maintenance costs

- Tool free access to the main brush.

5 Efficient filter system

- The round filter system has a large surface area (64.5 sq ft) to handle the dustiest environments
- Self-cleaning features guarantees the best protection against fine dust.
- Intuitive filter check for longer life, and less replacement costs.

Technical data and equipment.



KM 100/120 R BP

TECHNICAL SPECIFICATIONS

Cleaning path	in	28.7-50
Brush quantity	units	1-4
Brush diameter	in	5
Main broom speed	rpm	600
Debris bin capacity	gal	31.7
Debris bin emptying height	inch	60
Total machine battery voltage	V	24
Filter area	ft²	64.5
Productivity (practical/theoretical)	ft²/hr	75,577
Climbing ability	%	18
Weight with batteries	lbs	1,580
Dimensions (L x W x H)	in	67 x 47 x 54

EQUIPMENT

Order No.	Description
9.899-870.0	KM 100/120 R Bp, AGM batteries, shelf charger

ACCESSORIES

Order No.	Description
■ 6.905-095.0	Main broom
■ 6.905-986.0	Side broom
■ 8.629-184.0	Battery pack 24V, 6v, AGM, 3 required
■ 8.642-664.0	Battery charger, 24V, 50A
■ 6.414-532.0	Round filter
□ 2.853.095.0	Deluxe seat add-on kit
□ 2.852-913.0	Left side broom add-on kit
□ 2.853-034.0	4 Side broom add-on kit
□ 2.852-491.0	Ram protection add-on kit
□ 2.853-030.0	Vacuum add-on kit
□ 2.853-048.0	Wheel set, non-chalking
□ 2.852-835.0	Water spray add-on kit
□ 2.852-828.0	Overhead guard
□ 2.853-092.0	Blue spotlight add-on kit
□ 2.853-042.0	Rear light add-on kit
□ 2.853-094.0	Work lighting add-on kit
□ 2.852-863.0	STVZO add-on kit
□ 2.852-911.0	Warning beacon revolving signal add-on kit
□ 6.905-190.0	Main broom, soft
□ 6.905-191.0	Main broom, hard
□ 6.906-133.0	Side broom, soft
□ 6.906-065.0	Side broom, hard

■ Included □ Optional

Please contact us for more information:

Kärcher Canada Inc.
275 Pendant Drive
Mississauga, Ontario L5T 2W9
Tél. +1 905 364-5006
Fax +1 905 672-3155
www.karcher.ca.



www.karcher.com/ca



[karchercanada](https://www.facebook.com/karchercanada)



[@karchercanada](https://www.instagram.com/karchercanada)



[karcher Canada](https://www.youtube.com/karcherCanada)



[karcher Canada Inc](https://www.linkedin.com/company/karcherCanadaInc)