

KÄRCHER



NO MATTER WHAT'S YOUR CHALLENGE IS.

There's Kärcher for that.

Kärcher professional range
Experience how Kärcher makes a difference

www.karcher.com/in

Kärcher, the worldwide market leader

All over the world, the name Kärcher stands for power, quality, innovation and cleaning expertise that has been setting the highest of standards for 90 years. As the inventor of high pressure cleaning, Kärcher is today a world market leader and one of the driving forces behind new technological developments. Kärcher employs more than 13,000 people and has more than 160 subsidiaries all over the world. More than 1000 engineers and technicians at 5 engineering centers are working on further improvements and new products, using the most advanced technologies in design, development and testing in their quest for even better performance, long service life and better environmental protection. They are guided by the principle that the customer is the measure of all things.

90 YEARS



reddot design award



Focus Energy



Innovative from the very beginning

In 1950 Kärcher developed the first hot water high pressure cleaner for professional cleaning.

Degree of innovation

More than 2000 patents have been registered from 1935 till today. 95% of our products are less than 5 years old.

Excellent performance

Every year Kärcher receives awards, commendations and certificates for design, ergonomics, performance and environmental protection.

All over the world

Kärcher is active in over 190 countries.

Worldwide customer service

More than 40,000 sales outlets all over the world provide a support network that is second to none and enable our customers to find fast and comprehensive help with all their questions about cleaning and our products.

Clean Environment

Kärcher engineers work on environmental protection daily with new products, technologies and investments in production facilities.





**RECORD
HOLDER**

CURRENT
BEST-SELLING
PRESSURE
WASHER BRAND



UNBEATABLE VERSATILITY - HIGH-PRESSURE CLEANING WITH KÄRCHER

Throughout the world, the name Kärcher is synonymous with power, quality and innovation. As a pioneer in high-pressure cleaning, Kärcher is now the market leader and has been continuously refining the principle of high-pressure cleaning for greater performance with less consumption, for a longer service life with shorter cleaning times, and for a range of products that leaves nothing to be desired in terms of its innovative technology and versatility: cold water or hot water units, powered by electric or combustion engine, mobile or stationary. There is also an extensive range of accessories that offers the right solution for every application.

Technical Data

COLD HIGH PRESSURE WASHER



Technical Data	HD 5/12 C	HD 8/18-4M	HD 10/25-4 S	HD 5/11 Cage *KAP	HD 6/15 M 50Hz *KAP	HD 6/15-4 M Classic	HD 6/15-4 Classic
Order No.	1.520-900.0	1.524-970.0	1.286-954.0	1.520-204.0	1.150-945.0	1.367-900.0	1.367-306.0
Supply Voltage (phases)	1 / 230 / 50	3 / 400 / 50	3 / 376 - 424 / 50	1 / 230 / 50	1 / 230 / 50	1 / 216 - 244 / 50	1 / 220 - 240 / 50
Flow Rate (l/h)	500 - 500	380 - 760	500 - 1000	500	560	450 - 600	450 - 600
Working pressure (bar/Mpa)	120 - 120 / 12 - 12	30 - 180 / 3 - 18	80 - 250	up to 110 / up to 11	150/15	70 - 150	70 - 150 / 7 - 15
Max. pressure (bar/MPa)	175 / 17.5	270 / 27	280	160 / 16	225 / 22.5	190	190
Connected Load (KW)	2.5	4.6	8.8	2.2	3.1	3.4	3.4
Weight (KG)	24.4	39.3	69.8	21.3	29.2	51.6	48.7
Dimension(LxWxH) (mm)	380 x 360 x 930	400 x 455 x 700	607 x 518 x 1063	475 x 335 x 340	400 x 455 x 700	740 x 528 x 952	709 x 469 x 1000
Nozzle size (mm)	35	-	47	-	-	36	-



Technical Data	HD 10/16-4 Cage Ex	HD 10/15-4 Cage Food	HD 7/16-4 Cage *KAP	HD 9/20--4 M Classic *EU	HD 9/50-4
Order No.	1.353-904.0	1.353-908.0	1.367-314.0	1.367-903.0	1.367-156.0
Supply Voltage (phases)	3 / 400 / 50	3 / 400 / 50	3 / 400 / 50	3 / 376 - 424 / 50	3 / 400 / 50
Flow Rate	1000	440 - 990	400 - 700	500 - 900	500 - 900
Working pressure (bar/Mpa)	160 / 16	20 - 145 / 2 - 14.5	70 - 160 / 7 - 16	70 - 200	150 - max. 500 / 15 - max. 50
Max. pressure (bar/MPa)	220 / 22	175 / 17.5	220 / 22	240	-
Connected Load (KW)	5.5	6.4	4.3	6.5	15
Weight (KG)	131.2	78.4	61.4	63.5	195
Dimension(LxWxH) (mm)	980 x 720 x 1100	650 x 521 x 1100	625 x 500 x 360	740 x 528 x 952	930 x 800 x 920
Nozzle size (mm)	-	-	-	47	-



Technical Data

HOT HIGH PRESSURE WASHER



Technical Data	HDS 12/18-4 S	HDS 13/20-4 S	HDS 8/18-4 C	HDS 10/21-4 M	HDS-E 8/16-4 M	HDS 8/18-4 M
Order No.	1.071-959.0	1.071-937.0	1.174-900.0	1.071-939.0	1.030-904.0	1.077-908.0
Supply Voltage (phases)	3 / 400 / 50	3 / 400 / 50	3 / 400 / 50	3 / 400 / 50	3 / 400 / 50	3 / 400 / 50
Flow Rate (l/h)	500 - 1200	600 - 1300	300 - 800	500 - 1000	300 - 760	400 - 800
Temperature (for supply 12 °C) (°C)	min. 80 - max. 155	min. 80 - max. 155	min. 80 - max. 155	min. 80 - max. 155	min. 45 - max. 85	min. 80 - max. 155
Max. pressure (bar/MPa)	30 - 180 / 3 - 18	30 - 200 / 3 - 20	30 - 180 / 3 - 18	30 - 210 / 3 - 21	30 - 160 / 3 - 16	30 - 180 / 3 - 18
Connected Load (KW)	8	9.5	6	8	29.5	5.5
Weight (KG)	199.9	206	119.4	160.2	122.1	159.3
Dimension(LxWxH) (mm)	1330 x 750 x 1060	1330 x 750 x 1060	1060 x 650 x 920	1330 x 750 x 1060	1330 x 750 x 1060	1330 x 750 x 1060

HOT WATER HIGH-PRESSURE CLEANERS - EFFICIENT AND DURABLE

State-of-the-art burner technology

Hot water high-pressure cleaners from Kärcher are subject to continuous development. The highly efficient burner and turbo blower enable the reduction of emissions and fuel consumption. The independent European Cleaning Machines Association has certified Kärcher as the world's number one supplier of hot water high-pressure cleaners in terms of efficiency and compliance with exhaust gas regulations.

This guarantees:

- Highly efficient burners
- Low fuel consumption
- Low emissions

Durable pump engineering

All pumps used in Kärcher high-pressure cleaners are manufactured by specialists in our own plants. This guarantees superior "made by Kärcher" quality. The integrated soft damping hose smooths out hydraulic pressure fluctuations in the system, which guarantees a longer lifetime for the high-pressure cleaner.

Save energy and protect the environment

Kärcher's new series of hot water high-pressure cleaners is the first in the world to offer the ecoefficiency mode. Simply turn the main switch to ecoefficiency mode and the machine switches to the most economical temperature range (60°C) while maintaining full water flow. The advantage: the burner cycles are optimised and the fuel consumption (compared with full-load operation at 80°C) is reduced by 20%.

Exemplary mobility

Kärcher high-pressure cleaners are always raising the bar in terms of mobility. The HOS range of the compact, Medium and Super classes are constructed according to the "jogger" design: large rubber-tyred wheels at the rear and steering rollers in the front. The sack truck principle, which is well-known and tried-and-tested in our cold-water units, is now also being used in the hot-water machines of our HOS Upright class for the first time. Added to this are ergonomically shaped push handles and perfect weight distribution - ideal features for fast and safe location changes with minimal effort. Forklift compatibility, transport eyelets and a tilting aid enable trouble-free transport.



ORIGINAL KÄRCHER ACCESSORIES FOR ENHANCED CLEANLINESS

Original Kärcher accessories and cleaning agents expand your high-pressure cleaner's range of applications, for everything from cleaning and care of construction machines to work preparation for facades and floors. In order to meet your stringent requirements at any time, we are constantly developing our accessories. The result is innovative products that will help you with your daily cleaning tasks.



1. EASY!Force high-pressure gun

Fatigue-free work is now a reality, because our new EASY! Force high-pressure trigger gun uses the high-pressure jet's recoil force to reduce the operator's holding force to zero. The Advanced version also uses a fully ceramic valve which extends the service life up to five times compared with other high-pressure guns.

2. Servo Control

With Servo Control, the water volume and working pressure can be continuously and conveniently controlled directly at the spray gun without work interruptions.

3. EASY!Lock quick-release fasteners

The patented EASY!Lock quick-release fasteners allow for set-up, removal and accessory changes that are five times faster than with conventional screw connections while maintaining the ruggedness and durability of the tried-and tested screw connections.

4. Ergonomic spray lance handle

Unprecedented ease of use and additional handle options for pleasant and changeable working conditions: the ergonomic spray lance handle is a special accessory for our high-pressure lances in the EASY!Lock range. Particularly suitable for washing vehicles, floors and surfaces or for using long lances to clean facades.

5. PowerControl spray lance

For continuous, uninterrupted pressure regulation directly on the spray lance, without reducing the water volume. With low-pressure operation, it is also possible to add cleaning agents. The ideal addition for machines without Servo Control.

6. Surface Cleaner FRV

For splash-free surface cleaning and water suction in one operation, with no cumbersome rinsing. For particularly high area performance, now also available in a working width of 500 mm as well as in a hot-water-resistant stainless steel version (FRV 50 Me).

7. New cup foam lance

For innovative foam cleaning: the upgraded popular cup foam lance with its extra jet level setting, precise cleaning agent dosing unit and more resistant, nickel-plated brass base body is truly impressive. Available in two versions, for machines with or without Servo Control.

DRY VACUUM CLEANERS



NO CABLE. NO LIMITS. NO END.

With our battery-operated dry vacuum cleaners you are mobile, flexible and independent.



Technical Data

DRY VACUUM CLEANER



Technical Data	CV 38/2 Adv *EU	BVL 5/1 Bp *INT	CVS 65/1 Bp	T 14/1 Classic *EU	T 15/1 *EU	T 15/1	T 15/1 HEPA
Order No.	1.033-336.0	1.394-274.0	1.517-301.0	1.527-170.0	1.355-200.0	1.355-300.0	1.355-235.0
Supply voltage (V/Hz)	220 - 240 / 50 - 60	100 - 240 / 50 - 60		1 / 220 - 240 / 50 - 60	220 - 240 / 50 - 60	220 - 240 / 50 - 60	1 / 220 - 240 / 50 - 60
Vacuum (mbar/kPa)	200 / 20	223 / 22.3	1	285 / 28.5	220 / 22	185 / 18	220 / 22
Air flow (l/s)	40	40		47	43	40	43
Container content (l)	5.5	5	20	14	15	15	15
Sound pressure level (dB(A))	65	65	56	69	60	52	60
Rated performance (W)	-	-	-	-	-	585	700
Weight (kg)	12.2	6.2	36,9	5.3	11.4	10.1	11.5
Dimensions (L x W x H) (mm)	370 x 390 x 1215	220 x 320 x 510	980 x 675 x 1070	355 x 310 x 466	434 x 316 x 400	430 x 255 x 420	434 x 316 x 400

Technical Data	BVL 3/1 Bp	T 11/1 Classic HEPA RelPlast
Order No.	1.394-300.0	1.527-205.0
Supply voltage (V/Hz)	-	1 / 220 - 240 / 50 - 60
Vacuum (mbar/kPa)	189 / 18,9	235 / 23.5
Air flow (l/s)	35,4	40
Container content (l)	3	11
Sound pressure level (dB(A))	65	61
Rated performance (W)	350	850
Weight (kg)	5.6	6.4
Dimensions (L x W x H) (mm)	220 x 317 x 450	385 x 285 x 385



WET & DRY VACUUM CLEANERS



PROFESSIONALS TO THE CORE

Kärcher standard wet and dry vacuum cleaners are designed for picking up coarse dirt and liquids in professional use. Robust, powerful and reliable, these vacuum cleaners offer an excellent price-performance ratio.



Technical Data

WET AND DRY VACUUM



Technical Data	NT 22/1 Ap L	NT 30/1 Me Classic *CN	NT 75/1 Me Ec H Z22	NT 40/1 Ap L *	NT 70/2 Me Classic
Order No.	1.378-600.0	1.428-569.0	1.667-331.0	1.148-321.0	1.667-224.0
Supply Voltage (phases)	1 / 220 - 240 / 50 - 60	1 / 220 - 240 / 50 - 60	220 - 240 / 50 - 60	1 / 220 - 240 / 50 - 60	1 / 220 - 240 / 50 - 60
Air flow (l/s)	72	59	61	74	2 x 53
Vacuum (mbar/kPa)	249 / 24.9	227 / 22.7	220 / 22	273 / 27.3	225 / 22.5
Rated input power (W)	max. 1300	max. 1500	max. 1000	max. 1380	76
Container content (l)	22	30	75	40	70
Weight (KG)	8.2	8	31.9	16.5	25
Dimension (LxWxH) (mm)	380 x 370 x 480	380 x 365 x 640	695 x 540 x 1012	525 x 370 x 630	580 x 510 x 850
Nozzle size (mm)	300	360	360	300	360

Technical Data	NT 75/2 Tact* Me	NT 65/2 Ap
Order No.	1.667-288.0	1.667-291.0
Supply Voltage (phases)	1 / 220 - 240 / 50 - 60	1 / 220 - 240 / 50 - 60
Air flow (l/s)	2 x 74	2 x 74
Vacuum (mbar/kPa)	254 / 25.4	254 / 25.4
Rated input power (W)	max. 2760	max. 2760
Container content (l)	75	65
Weight (KG)	35	20
Dimension (LxWxH) (mm)	630 x 545 x 920	600 x 480 x 920
Nozzle size (mm)	630	360



Technical Data

INDUSTRIAL VACUUMS



Technical Data	IVR 100/22 TEXTILE	IVM 100/55 Sc	IVR 100/22 Sc	IVM 100/22 Sc	IVC 60/30 Ap M Z22	IVM 40/12-1 M Z22	IVM 40/24-2	IVR-L 100/30 Sc
Order No.	9.870-300.0	9.870-301.0	9.870-302.0	9.870-303.0	1.576-106.0	9.990-265.0	9.989-906.0	9.986-064.0
Voltage (V)	415	415	415	415	400	220 - 240	220 - 240	400
Frequency (Hz)	50	50	50	50	50	50 - 60	50 - 60	50
Electrical Protection (IP)	55	55	55	55	55	55	-	-
Insulation Class (Class)	F	F	F	F	F	F	F	F
Rated Power (KW)	2.2	5.5	2.2	2.2	3	1 x 1.2	2.3	3
Air Flow (M³/h)	300	600	300	300	300	49.4 / 178	106 / 381.6	87.5 / 315
Vacuum Max (mm H2O)	3000	3000	3000	3000	-	-	-	-
Noise Level dB(A)	72	76	76	72	-	-	-	-
Container Capacity (Litres)	120	85	85	85	-	-	-	-
Filter Type (Type)	Bag	Star	Star	Star	Star	Star	Star	-
Filter Surface (cm²)	-	30000	20000	20000	-	-	-	-
Filter Material	-	Polyester	Polyester	Polyester	-	-	-	-
Filter Class	-	L	L	L	L	L	L	L
Inlet (mm)	40	80	80	80	-	-	-	-
Dimension (L X W X H) (cm)	60 X 65 X 120	118 X 67 X 141	82 X 67 X 170	118 X 67 X 141	970 x 690 x 1240	645 x 655 x 1140	645 x 655 x 1150	850 x 760 x 1800
Weight (Kg)	40	150	98	120	95	50	35.7	132

VACUUM. CLEAN. SOLID.

Vacuuming has countless applications in industry: from fine dust to coarse dirt, solids or liquids, mobile or stationary. We develop standard or customised vacuuming solutions for you for a wide range of sectors and areas of use. You tell us what you need to vacuum and where. We show you the best way of doing this.



ICE BLASTER



**ICE COLD ON DIRT -
GENTLE ON SURFACES**



Technical Details

IB 7/40 Classic/Adv*

Current type	~/V/Hz	1/220-240/50 or 60**
Connection load	kW	0.6
Sound pressure	dB(A)	max. 99
Casing/frame		Stainless steel
Weight excluding accessories	kg	93
Dimensions (L x W x H)	mm	768 x 510 x 1096

Compressed air

Hose connector		Claw coupling (DIN 3238)
Working pressure	bar/MPa	2-10/0.2-1.0
Volume flow	m ³ /min	0.5-3.5
Compressed air quality		dry and oil-free

Dry ice blasting

Blasting pressure	bar/MPa	2-10/0.2-1.0
Dry ice pellets	Ø in mm	3
Dry ice consumption	kg/h	15-50
Dry ice tank capacity	kg	15

Order no. **1.574-001.0**

* The jet gun with remote control and coiled earth cord are only included in the scope of delivery with the IB 7/40 Adv.

** 60 Hz only in conjunction with modification kit 2.882-686.0

ACCESSORIES

JET GUN Heavy Duty



JET GUN Advanced



JET GUN Classic



NOZZLES Flat jet nozzle

Jet width up to 100 mm for high area performance.



NOZZLES Scrambler

Breaks up the pellets into finer particles for extremely gentle cleaning.



NOZZLES Round jet nozzles

Extremely powerful nozzles with very high cleaning power.



OTHER ACCESSORIES Hose trolley

Holds up to 80 m compressed air hose 1". Indispensable on any construction site.



OTHER ACCESSORIES Disposable protective cover

For especially dirty jobs. Protects the spray hose. Easy to change.



OTHER ACCESSORIES Cavity nozzles

For cleaning pipes or blind holes.





THE ECONOMIC VENTILATION SOLUTION

AB 30 Classic



Technical Details

AB 30 Classic

Maximum air flow rate (m ³ h)	29.3
Cable length (m)	6.1
Input power (W)	520
Power supply (V/Hz)	220-240V/50Hz
Weight (kg)	8.2
Speed (high / medium / low) (rpm)	1350 / 1150 / 950
Dimensions (L x W x H) (mm)	405 x 400 x 415
Order no.	1.004-058.0

LEAF BLOWER



POWERFUL, ECONOMICAL AND ENVIRONMENT FRIENDLY

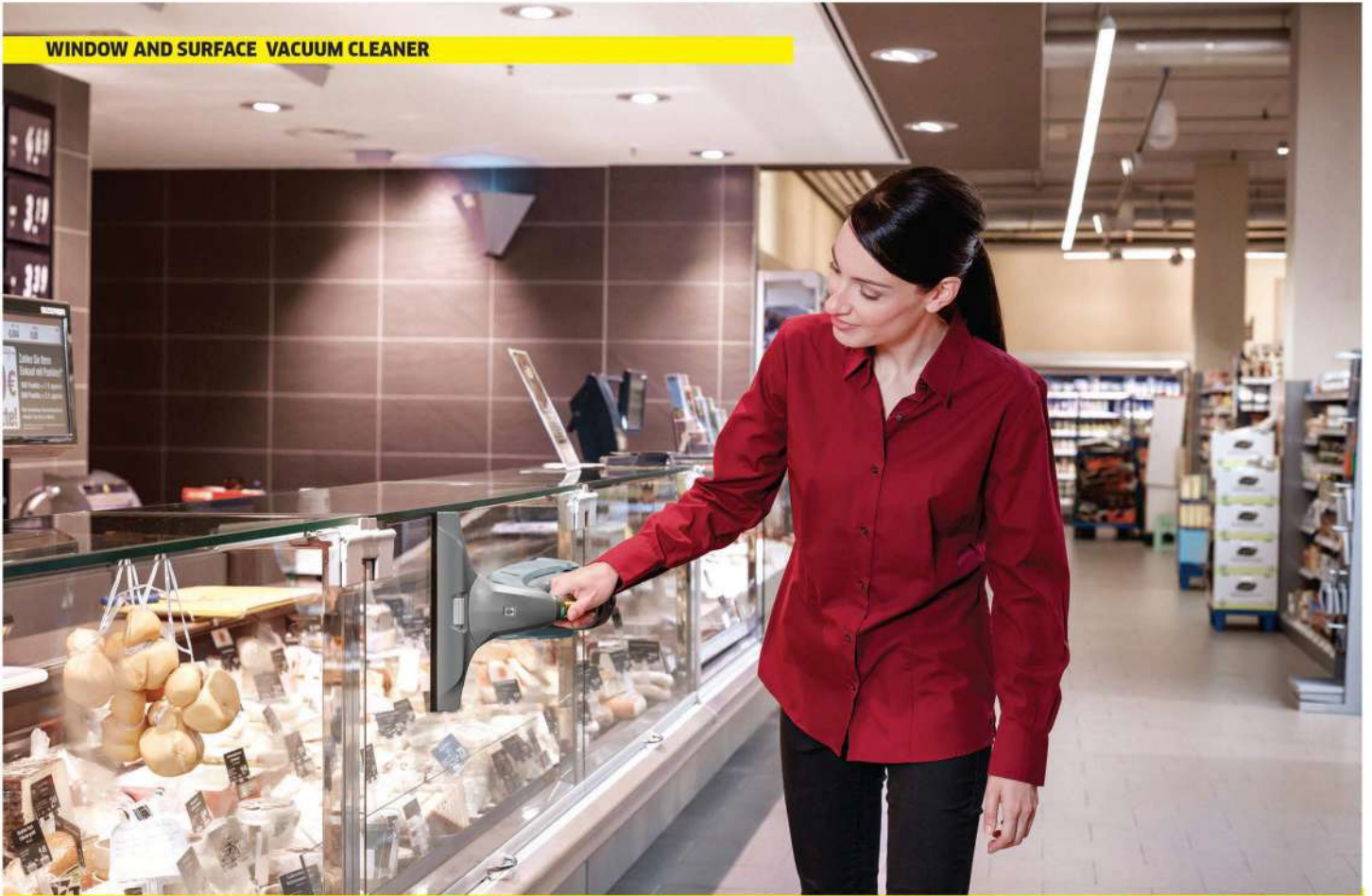


Technical Details

LB 930/36 Bp

Variant	Battery and charger included
Air throughput (m ³ /h)	930
Air speed (m/s)	max.60
Blowing power (N)	14
Battery platform	36 V battery platform
Voltage (V)	36
Runtime per battery charging (min)	max. 40 (6.0 Ah) / max. 50 (7.5 Ah)
Weight without accessories (kg)	3
Weight incl. packaging (kg)	5
Dimensions (L x W x H) (mm)	840 x 150 x 340
Order no.	1.042-507.0

WINDOW AND SURFACE VACUUM CLEANER



VERSATILE, ERGONOMIC

TECHNICAL DETAILS AND ACCESSORIES

Technical Details		WVP 10 Adv
Dirty water tank	ml	200
Battery charging time	min	60
Voltage	V	100-240
Frequency of battery charger	Hz	50-60
Width of suction nozzle	mm	280
Width of narrow suction nozzle	mm	170
Weight	kg	0.7
Dimensions (H x W x D)	mm	125 x 280 x 325
Order no.		1.633-560.0



Cleaning agent

Everyday, surface or glass cleaner; we offer you the full range of ready-to-use cleaning agents. Quick and streak-free drying, gentle on materials and environmentally friendly.



Batteries and battery chargers

Additional batteries give you a useful working time buffer to suit your individual requirements. In principle, the quick charger allows you to work continuously all day long.



Useful accessories

With additional suction nozzles and squeegees in different widths, a telescopic extension kit, spray bottle kits or additional microfibre cloths, you can add useful accessories to your machine to suit your individual needs.

SPRAY-EXTRACTION CLEANER



HYGIENIC AND EFFECTIVE CLEANING OF CARPETS AND UPHOLESTRY

Technical Data

Technical Data	Puzzi 10/1	Puzzi 8/1
Order No.	1.100-130.0	1.100-240.0
Supply voltage (V/Hz)	220 - 240 / 50 - 60	220 - 240 / 50 - 60
Air flow (l/s)	74	71
Vacuum (mbar/kPa)	254 / 25.4	270 / 27
Max. area performance (m ² /h)	20 - 25	12 - 18
Weight (kg)	16.1	11.4
Dimensions (L x W x H) (mm)	690 x 325 x 440	524 x 332 x 442
Spray volume (l/min) and spray pressure (bar)	1	1 and 1
Turbine capacity (W)	1250	1200
Pump capacity (W)	40	40



Application areas:

- For intensive fibre-deep cleaning of upholstery and upholstered furniture
- For targeted stain removal on textile surfaces
- For cleaning all textile surfaces – including car interiors
- For intensive fibre-deep cleaning of upholstered car seats
- For targeted upholstery cleaning in hygienically sensitive areas



MORE THAN JUST STEAM

Professional steam cleaners and steam vacuum cleaners from Kärcher

Technical Data

Technical Data	SG 4/4	SGV 8/5 *EU
Order No.	1.092-104.0	1.092-010.0
Heat-up time (min)	9	7
Tank capacity (l)	2	5.5
Steam pressure (bar)	max. 4	max. 8
Heating output (W)	2300	3000
Boiler temperature (°C)	max. 145	max. 173
Voltage (V)	220 - 240	220 - 240
Frequency (Hz)	50 - 60	50 - 50
Weight (kg)	11.2	48
Dimensions (L x W x H) (mm)	475 x 320 x 275	640 x 495 x 965



Application areas:

- Stubborn dirt, stains and grease
- Wall tiles, ceramic floors and other hard surfaces
- Fittings, work surfaces and stainless steel surfaces
- Window panes, glass doors, glass surfaces and mirrors
- Fabrics and upholstered furniture
- Vehicle interior cleaning



INNOVATIVE. EFFICIENT. FULLY CONFIGURABLE.

Take the decisive criteria into consideration when deciding on a machine: the required area performance, the tank volume, the working width, object characteristics and the cleaning frequency. With area performances from approx. 200 to 16,500 m² and different brush heads, our scrubber driers give you all options for the perfect configuration of your ideal scrubber drier.

Technical Data

FC- SINGLE-DISC MACHINES



Technical Data	BDS 43/ Orbital C Spray	BDS 43/165 C Classic	BDS 43/Orbital C	BDS 43/150 C Classic
Order No.	1.291-253.0	1.291-261.0	1.291-252.0	1.291- 260.0
Working width of brushes (mm)	430	430	430	220-240
Working height (mm)	100	-	100	150
Brush rotational speed (rpm)	60	165 - 165	60	-
Brush contact pressure (g/cm ² /kg)	38 - 55	-	38 - 55	0.3
Sound pressure level (dB(A))	59	79	54	62
Supply voltage (V/Hz)	220 - 240 / 50	220 - 240 / 50	220 - 240 / 50	220-240
Weight (kg)	54.5	27.2	52.1	49.1
Dimensions (L x W x H) (mm)	430 x 520 x 1070	960 x 442 x 1112	1070 x 570 x 430	590x430x1180

FC- WALK-BEHIND SCRUBBER DRIER



Technical Data	BD 43/40 C EP *IN	BD 50/50 C BP Classic	BD 50/60 EP*IN	BR 30/4*EU
Order No.	1.515-404.0	1.127-025.0	1.515-410.0	1.783-220.0
Working width of brushes (mm)	430	-	500	300
Working width, vacuuming (mm)	850	-	-	
Tank of fresh/dirty water (l)	40/40	50/50	60	4/4
Area performance (m ² /h)	1800	2000	-	130
Brush rotational speed (rpm)	180	155	-	1450
Brush contact pressure (g/cm ²)	30 - 40	-	-	100
Supply voltage (V/Hz)	230 / 50	-	230	220 - 240 / 50 - 60
Weight (kg)	50.3	189/168.5/167	122	-
Dimensions (L x W x H) (mm)	1135 x 520 x 1025	1170 x 570 x 1025	1175 x 570 x 1030	507 x 343 x 1145

FC-STAIR/ ESCALATOR CLEANER

Technical Data	BD 17/5 C Ep
Order No.	1.737-107.0
Working width of brushes (mm)	170 - 200
Brush rotational speed (rpm)	450
Sound pressure level (dB(A))	69
Supply voltage (V/Hz)	220 - 230 / 50 - 60
Weight (kg)	5.6
Dimensions (L x W x H) (mm)	330 x 136 x 290



Technical Data

FC- RIDE-ON SCRUBBER DRIER



Technical Data	BD 50/70 R Classic *KAP	BD 75/120 R Classic Bp	BD 90/160 R
Order No.	1.161-076.0	1.161-431.0	1.246-041.0
Working width of brushes (mm)	510	750	900
Working width, vacuuming (mm)	900	950	1200
Tank of fresh/dirty water (l)	70 / 70	120 / 120	160/160
Area performance (m ² /h)	1964	3150	3780
Battery runtime (h)	max. 3	-	36 / 300 (v/ah)
Driving speed (km/h)	max. 5.5	max. 6	6
Brush rotational speed (rpm)	155	180	100 - 190
Brush contact pressure (kg)	19.5	75	94 / 89
Water consumption (l/min)	max. 2.3	max. 5	max. 7
Sound pressure level (dB(A))	min. 66	min. 59 - max. 63	67
Weight (kg)	112	236	370
Dimensions (L x W x H) (mm)	1310 x 590 x 1060	1660 x 1035 x 1480	1740 x 970 x 1445

ROBOTIC SCRUBBER DRIER - KIRA B 50



Order No.	1.533-001.0
Working width of brushes (mm)	550
Working width, vacuuming (mm)	750
Tank of fresh/dirty water (l)	55 / 55
Area performance per tank filling (m ²)	approx. 1830
Battery runtime (h)	approx. 3.5
Driving speed (km/h)	max. 5.5
Brush rotational speed (rpm)	1350
Brush contact pressure (g/cm ²)	80
Weight empty(kg)	228
Dimensions (L x W x H) (mm)	1100 x 750 x 1200

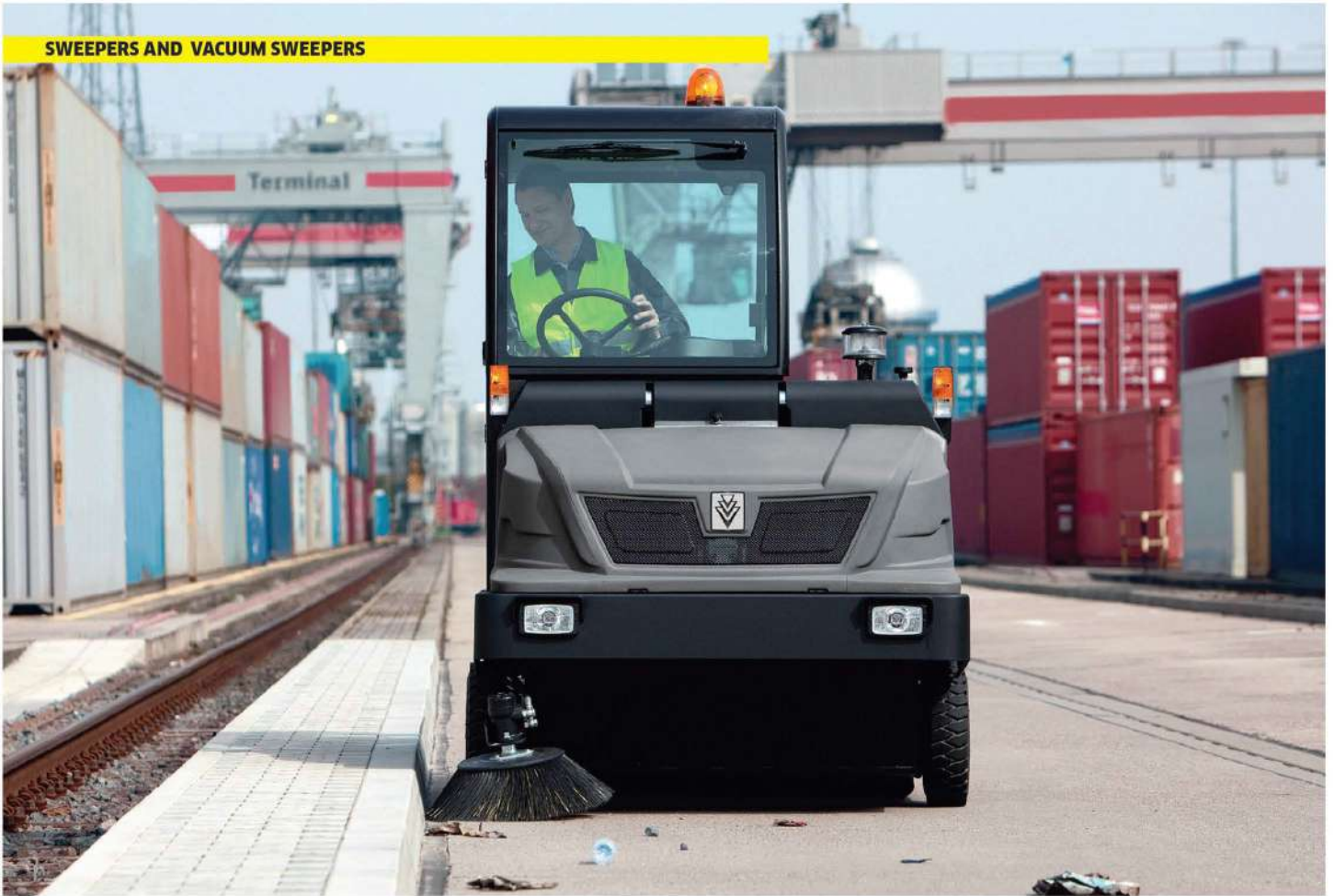


KIRA CV 50



Order No.	1.454-500.0
Working width, vacuuming (mm)	350
Area performance (m ² /h)	approx. 1830
Battery charging time with fast charger 80%/100% (min/h)	58 / 81
Weight without accessories (kg)	15.1
Weight (with accessories) (kg)	19.1
Weight incl. packaging (kg)	24
Dimensions (L x W x H) (mm)	578 x 578 x 300





FOR THE HIGHEST DEMANDS IN TRADE AND INDUSTRY

From the compact manual sweeper to the ride-on sweeper with container lift: Kärcher sweepers and vacuum sweepers are always state of the art. These extremely robust machines feature advanced sweeping and vacuuming technology. The perfect machines for cleaning indoors and outdoors effectively and economically.

Technical Data

KM- WALK BEHIND SWEEPERS



Technical Data	KM 70/20 C	KM 85/50 W Bp	KM 70/15 C	KM 75/40 W Bp	KM 70/20 C
Order No.	1.517-130.0	1.351-118.0	1.517-151.0	1.049-206.0	1.517-106.0
Max. area performance (m ² /h)	2800	3825	2800	3375	2800
Working width (mm)	480	615	480	550	480
Tank volume, gross/net (l)	45 / 20	-	42 / 20	-	42 / 20
Weight (kg)	21	226	20	125	22
Dimension	-	1550 x 1100 x 1066	1300 / 810 / 1040	1430 x 780 x 1180	1300 / 810 / 1040
Battery run time	Manual	Max 2.5	Manual	max. 2.5	Manual

KM- RIDE-ON SWEEPER



Technical Data	KM 85/50 R Bp	KM 100/100 R Bp	KM 120/250 R Bp	KM 100/100 R G	KM 120/250 R D Classic
Order No.	1.351-126.0	1.280-103.0	1.186-002.0	1.280-105.0	1.186-000.0
Drive- performance (V/W)	24 / 1000	24 / 2.1	36 / 5	6.7	15.8
Max. area performance (m ² /h)	5100	6000	7200	8000	10800
Working width (mm)	615	700	900	700	900
Battery voltage (V)	24	24	36	-	-
Battery runtime (h)	max. 2.5	max. 2.5	max. 3.5	-	-
Waste container (l)	50	100	250	100	250
Climbing ability (%)	12	18	14	18	18
Weight (kg)	230	300	1200	300	18
Dimensions (L x W x H) (mm)	1171 x 870 x 1136	2006 x 1005 x 1343	2082 x 1250 x 1450	2006 x 1005 x 1343	2082 x 1250 x 1450

OTHER SOLUTIONS OFFERED BY KÄRCHER

WOMA PRODUCT RANGE:

UHP Triplex Plunger Pumps 100-3000 Bar



Trailer Mounted Units up to 3000 bar



Power Packs from 100-3000 Bar



Waterblast Tools and Accessories





POWERFUL CLEANING SOLUTIONS FOR MUNICIPAL INDUSTRY

Whether it is for municipal applications in cities or suburban areas or in industrial environments with high cleaning requirements such as foundries, cement plants, mining operations: our professional sweepers are the best option for the most demanding sweeping requirements.

Technical Data

CITY SWEEPER

Technical Data	MCM 600/ISAL 6000
Order No.	1.999-052.0
Engine	Mercedes, 129.0 kW Stage IIIA VM Motori, 115.0kW Euro 6
Fuel Tank (l)	220
Driving/Working speed (km/h)	0-42
Climbing ability	0.25%
Transmission (WD)	8.3
Net weight (DIN 15429-1) (kg)	13
GVW (Kg)	-
Payload (Kg)	-
Turning circle (inside) (mm)	-
Wheel base (mm)	-
Net Weight (Dep. On Config.) (Kg)	-
Working hydraulics	-
Hopper capacity (gross/net) (l)	-
Fresh Water capacity (l)	-
Waste container volume (gross) (m ³)	6



Please contact us for more information

Ahmedabad

Unit No. A-509,
Shilp Corporate Park,
Rajpath Rangoli Road,
Thaltej,
Ahmedabad-380015

Hyderabad

Ground Floor, West Block
Plot No.9/17/A&B,
Road No.6, IDA, Nacharam,
Medchal-Malkajgiri
District-500076,
Hyderabad, Telangana.

Indore

Ground Floor of K Avenue,
340 F-AD, Sector A,
Sch. No. 74-C,
Vijay Nagar, Indore
(M.P.)-452010

Punjab

Unit no. 1105, 11th Floor,
SHOP No. 48, Ground Floor
Block D&E,
Chandigarh Citi Centre
(CCC) at VIP Road,
Zirakpur, Distt.
Mohali 140603.

Gurugram

E-147,
Sushant Arcade,
Sushant Lok B Block,
Gurugram,
Haryana-122002

Kolkata

Karcher Cleaning Systems
Pvt Ltd.
Mouza - Jaladhulagori,
Near - Begri More,
Puratan chowrasta,
Dist. Howrah,
West Bengal-711302

Pune

Office No-304,
3rd Floor,
Koncord tower,
Bund Garden,
Sangamwadi,
Pune 411001.

Jamshedpur

MyBranch Karcher
Cleaning Systems Pvt Ltd.
Office JSP-01,
Fairdeal Complex, 1st Floor,
Main Road, Bistupur,
Jamshedpur-831001,
Jharkhand

Kochi

Awfis Space Solutions,
Mezhukkattil Matrix,
Chittoor Road,
Shenoys, Mullassery
Canal Junction, Ernakulam
Kochi- 682011

Noida office

A42/4 Sector
62 Noida-201309
Uttar Pradesh

Jaipur

Regus Business Centre
Karcher Cleaning Systems
Pvt Ltd. Office No-620,
6th Floor, Tonk Road &
B2 Bypass Junction,
Sector B-4, Near Airport,
Jaipur-302020, Rajasthan

Vadodara

Karcher Cleaning Systems
Private Limited.
C-5, 3rd Floor,
Alembic 1965, Alembic
City, Gorwa-Alembic Road,
Vadodara-390003, Gujarat

Bengaluru

No.504,4th Block,1st Stage
100ft Outer Ring Road
(Service Road) HBR Layout
Bangalore-560043,
Karnataka

Chennai

No.54 Alappakkam
Main Road,Maduravoyal
Chennai-600095

Mumbai

A206, Punit Industrial
Premises Co-op. Soc. Ltd
Turbhe Railway Station,
Turbhe Naka Bus Stop,
Navi Mumbai- 400705



Facebook



Instagram



LinkedIn



Twitter



Youtube