

**K'ARCHER**

# GRAFFITI REMOVAL MADE MOBILE.



The **van mounted self-contained mobile cleaning** unit made to remove gum, graffiti, street grime, and more.

PROFESSIONAL | GRAFFITI REMOVAL



# QUIET, MOBILE, POWERFUL.



Our **Van Mounted self-contained mobile cleaning unit** is the ideal solution for removing gum, graffiti, and street grime along with many other industrial cleaning applications. With an onboard **Kärcher Professional HDS 1000 DE hot water high-pressure cleaner**, keeping the streets spotless is easy. The Yanmar diesel engine is mounted into the back of the vehicle with onboard tools that are completely self-contained and 100% mobile making it perfect for working in residential areas.

This quiet, unobtrusive, and low-maintenance mobile cleaning solution is also the quietest in its class so is a great choice for local authorities, agriculture, plant hire, and contract cleaners working in residential areas, shopping malls, parks, and remote areas.

## AT A GLANCE:

- Operated with doors shut, reducing noise to a minimum
- Fully self-contained, fill up with water & diesel, and go
- Up to 2.5 hours - with the option for continual use
- Ergonomically designed storage for ancillary equipment
- Up to 90m of high pressure hose
- Fully waterproof and sealed to increase the life of the vehicle



# APPLY SOME PRESSURE!

All Van Mounted vehicles are fitted with a Kärcher HDS 1000 DE hot water pressure washer with a 10 HP Yanmar diesel engine, built into a sturdy, protective tubular frame in the back of the vehicle. Even in areas where no external power supply is available, the working pressure of up to 207 bar and temperature range up to 150°C can deliver an ultra-powerful clean that cuts through chewing gum, graffiti, and grime like butter.

An onboard baffled water tank allows up to **4 hours of constant use**, whilst the lance attached to up to 90m of high pressure hose reels, permit dual operation for maximum productivity.

Safety is evident throughout the entire unit design. The unit also has its own unique exhaust extraction and cooling fan/vent system to keep the vehicle clear of any fumes exuded from the pressure washer plus each van is speedlined to create an ultra-durable exterior.

**IDEAL FOR REMOVING CHEWING GUM, GRAFFITI, FLY POSTERS, STREET AND PAVEMENT WASHING, PARK AREAS, AND MUCH MORE:**



**Variable Temperature**



**Low Water Consumption**



**Pavement Cleaning at up to 100SqM per hour**



**Self-Retracting Hose Reel**



**Low Noise**



**A Range of Accessories to complete many different tasks**



# BUILT TO SUIT YOUR REQUIREMENTS.

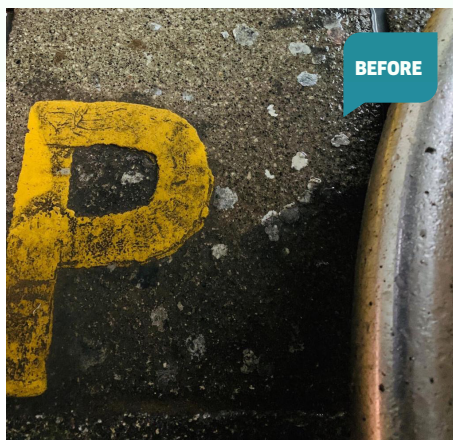
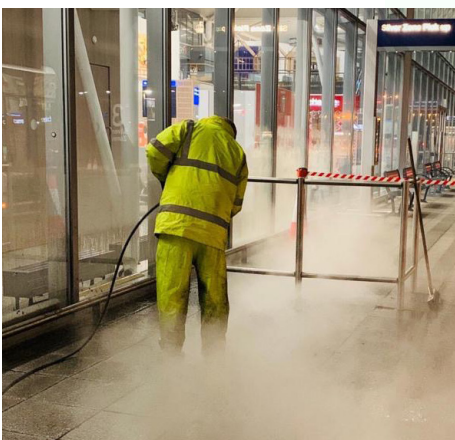
The customer leads the design on all of our conversions, with each element specifically synchronized to fit your requirements\*.

Many years of experience under our belt converting commercial vehicles into our unique van mounts has aided us in developing a specialist approach, achieving complete coordination with the customer and their needs.

The Ford Transit MWB (medium roof T350) is a firm favourite among city councils and private cleaning companies alike!



\*Weights (approx.): Unladen: 408kg | Laden: 1098kg, based on a standard kit. Weights for bespoke equipment may vary. We can fit out most types of vehicle, subject to them having the correct payload. Please contact our dedicated sales team for further information.





# AN EV SUCCESS STORY.

Taking a trip to Hounslow, take a read through some of the fantastic feedback we received after the addition of 2 electric graffiti removal vehicles to Hounslow Highways' EV fleet.

Highlighting the partnership in this rollout with Kärcher as “really collaborative”, the Cleansing Contracts Manager was impressed with the standard of care, commitment, and innovation from start to finish of the project. This sense of collaboration was felt “... from the building of the machine and getting the right model to fit the EV, to the delivery of the vehicle and training of the operatives, through to the maintenance and service package.”

Highlighting the importance of emission reduction and environmental responsibility by investing in their electric fleet, the team was impressed with the balance of sustainability and efficiency demonstrated in the vehicle operation, with at least a day to two days of operations realistic without the constant need to come back and charge.

Further contributing to this sustainable approach, was the use of greener HVO fuel to power the diesel motor and the use of our innovative Eco!Booster attachment, helping to reduce water consumption by 50%.

It's not just the crew that was impressed by the design, a Hounslow Highways Graffiti Removal Operative described how local residents were happy to be no longer affected by “excessive levels of noise”.

**Scan the QR code and take a look at the video we did with them.**

This is thanks to a simple but effective design feature - a tie door shut which leads the hose through a small opening in the door to significantly reduce noise emission whilst removing graffiti and cleaning.





# TAKE A LOOK AROUND!

Explore the front compartment (dry section) and rear compartment (wet section) of this van mount.

## Front Compartment (Dry Section)

1. Whole compartment sprayed with this hard epoxy resin coating to waterproof and protect vehicle from interior rusting and and damage.
2. Fire Extinguisher
3. Hot Hand Wash
4. Eye Wash & First Aid Kit
5. Strip Lighting
6. Manual Fletner
7. Vehicle Overload Protection System (This device provides both audio and visual warnings of the vehicles current weight. Not only will it indicate an overall overload, it will also indicate if either axel is over weight.)
8. 18" Rotary Floor Tool (Ideal for flat surface cleaning.)
9. Compartmented Storage
10. Chemical Storage Cabinet





## Front Compartment (Dry Section)



## Rear Compartment (Wet Section)

### Rear Compartment (Wet Section)

1. 650 Litre Baffled Water Tank (Fitted with ball cock system that prevents overflowing.)
2. Kärcher HDS 1000 DE Hot Pressure Washer
3. 30 Metre Retractable Hose Reel (Additional hose can be added, up to an extra 60 metres.)
4. Electric Fletner (Comes on automatically with the steam unit to vent away unwanted fumes.)
5. Fire Extinguisher
6. Flue for Burner Unit
7. Drain for Water Tank & Drip tray
8. Filling Point for Water Tank
9. Flashing Strobe Beacon
10. Rear Door Outlet for Hose (This allows the unit to be operated with the door closed, helping reduce noise and increase security.)
11. Waterproof Epoxy Resin Coating
12. Ventilation for Generator Exhaust
13. Water Filter (All water from the unit passes through this.)
14. Hydrant Filling Adaptor







makes a difference

We will be happy to advise you:

**United Kingdom**

Kärcher (UK) Ltd  
Kärcher House  
Brookhill Way  
Banbury  
Oxon OX16 3ED  
Phone +44 12 95 752 000  
Fax +44 12 95 752 103  
[www.karcher.co.uk](http://www.karcher.co.uk)

**Ireland**

Kärcher Ltd (Ireland)  
Unit 3, Redcow Retail Centre  
Robinhood Road  
Ballymount, Dublin 22  
D22 PY03  
Phone +353 1 409 7777  
Fax +353 1 409 7775  
[www.karcher.ie](http://www.karcher.ie)

