

KÄRCHER



CLEAN ENERGY GAIN MADE EASY.

iSolar cleaning systems for photovoltaic and solar units.

PROFESSIONAL | PRESSURE WASHER ACCESSORY | iSOLAR

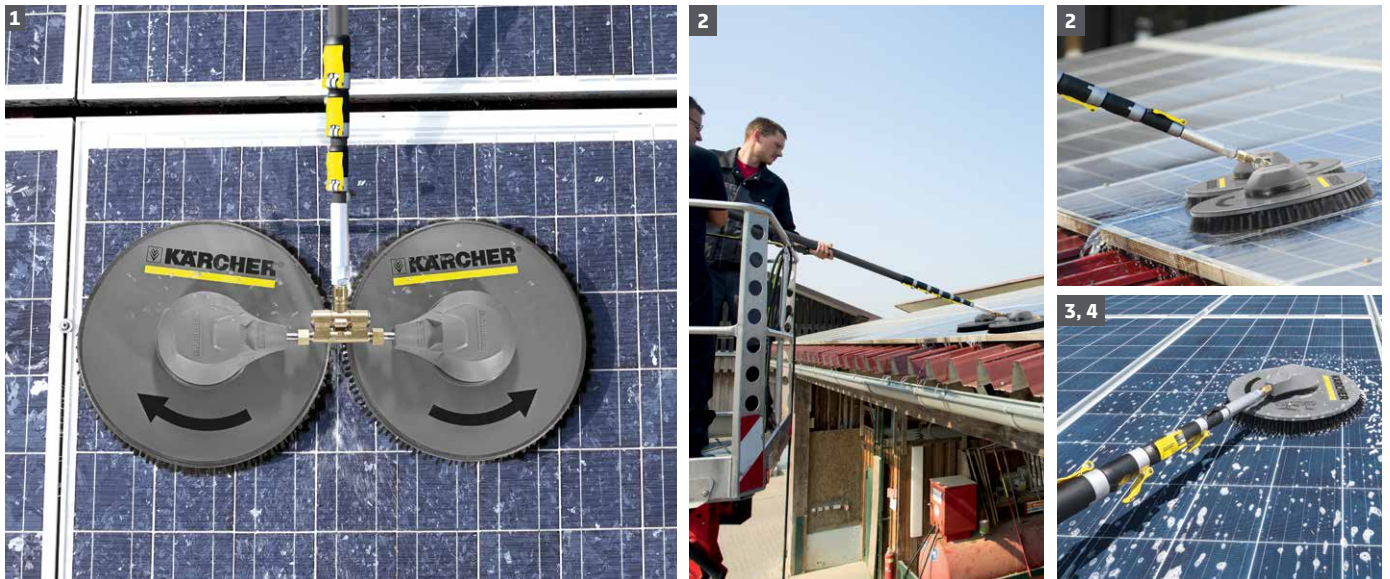
ISOLAR 400/800 SOLAR PANEL CLEANER



No place is unreachable.

The iSolar accessories system is a complete modular solution that offers all the necessary products for your cleaning needs, from water connections to brushes. This system is also compatible with many Kärcher pressure washers, meaning, existing pressure washers can usually be used to operate iSolar. Because the system is modular, we can build a custom solution to fulfill any requirement.

The iSolar 400 and iSolar 800 offer superior and safe cleaning, thanks to brushes powered by a pressure washer's water jet. The mechanical action of the bristles, made of nylon for scratch-free surface cleaning, operate at low pressure, eliminating any danger of the panels being damaged. The rotating brushes are also fitted with robust ball bearings to guarantee exceptionally long service life.



1 iSolar 800, Counter-rotating disc brushes ensure:

- Excellent cleaning performance and area coverage
- Optimal handling with balancing of transverse forces
- Pre-rinsing of adjacent panels

2 Comfortable in every position, stable articulated joint offers:

- Convenient and flexible working positions
- Robust brass design for maximum durability

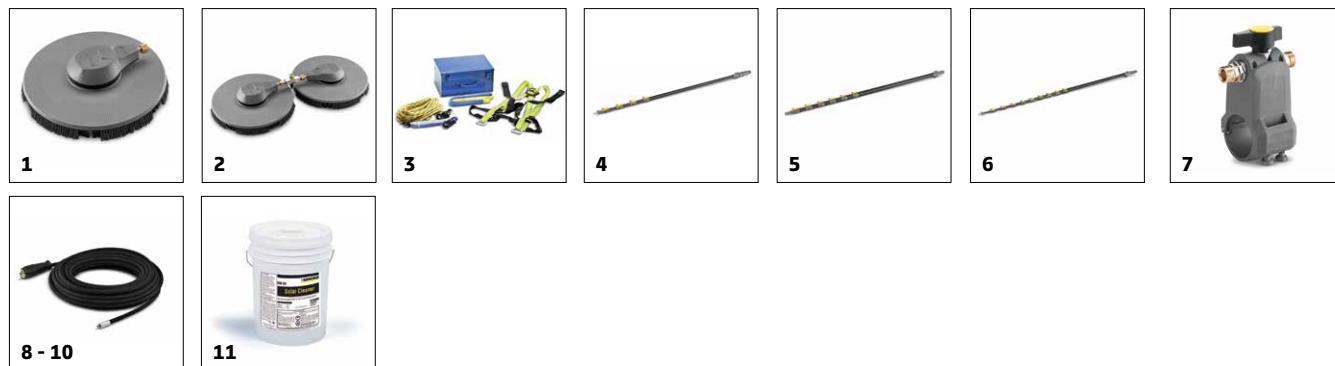
3 iSolar 400, Entry-level model for smaller areas:

- Particularly suitable for elevated systems
- Pre-rinsing of adjacent panels

4 Safety first, For safe rooftop work:

- Safety harness with quick-release fasteners
- Guided fall arrestor with integrated shock absorber and lengthy guide rope

TECHNICAL DATA AND EQUIPMENT.



		Order no.	Length	Flow rate	Max. feed temperature	Description
iSOLAR PANEL CLEANER						
iSolar 400	1	6.368-093.0 6.368-092.0		4.4-5.7 GPM 3.4-4 GPM	104 °F	The water-driven iSolar 400 disc brush features a working width of 400 mm and is especially suitable for cleaning small to medium-sized photo-voltaic systems. Thanks to the low weight and easy handling, even elevated systems can be conveniently cleaned.
iSolar 800	2	6.368-095.0 6.368-094.0		4.4-5.7 GPM 3.4-4 GPM	104 °F	The water-driven iSolar 800 brush head with 800 mm working width works with two contra-rotating disc brushes and is used for cleaning photo-voltaic systems. The contra-rotating brushes balance out all transversal forces, guaranteeing optimal handling. The flexible angle joint on the brush head's connector also makes cleaning easier. It ensures that the bristles always lie flat, allowing uniform cleaning results. The brush head features especially high area performance – ideal for cleaning large systems, for example on barn roofs.
Safety kit	3	6.988-152.0				Certified, standard-compliant safety system for safe working on roofs. The fall protection includes a traveling fall arrestor with shock absorber and 49.2 ft kernmantle rope, safety harness, an anchoring loop for fixing the safety machine, as well as a practical metal box for storage and transport.
iSolar TL 7 H (without hose, iSolar HP hose 7 required)	4	4.762-609.0	5-23 ft.		140 °F	Telescopic wand made from carbon/fiberglass mixture for maximum rigidity with minimum weight. With a 23.6 ft maximum reach and practical quick-release couplings for easy extension and retraction.
iSolar TL 10 C (without hose, iSolar HP hose 10 required)	5	4.762-612.0	7-33 ft.		140 °F	The telescopic wand is made from a carbon-fiberglass mixture (hybrid) and offers maximum rigidity with minimum weight. It has a reach of up to 32.8 ft and is fitted with practical quick-release couplings – for convenient extension and retraction. The speed can be regulated via optional ball tap, guaranteeing easy handling. The carbon-fiberglass mixture is also on the lowest rod element and ensures electrical insulation and thus work safety.
iSolar TL 14 C (without hose, iSolar HP hose 14 required)	6	4.762-613.0	7-45 ft.		140 °F	The telescopic wand is made from a carbon-fiberglass mixture (hybrid) and offers maximum rigidity with minimum weight. It has a reach of up to 45.9 ft and is fitted with practical quick-release couplings – for convenient extension and retraction. The speed can be regulated via optional ball tap, guaranteeing easy handling. The carbon-fiberglass mixture is also on the lowest rod element and ensures electrical insulation and thus work safety.
Shut off valve	7	4.580-097.0				Shut off valve for iSolar telescopic wands (has to be ordered separately)
iSolar HP hose 7	8	6.392-978.0	28 ft.		311 °F	The high-quality and flexible high-pressure hose with rubber outer covering is suitable for use in combination with the iSolar TL 7. The outer skin of the hose features especially good sliding properties – ideal for extending and retracting the telescopic wand.
iSolar HP hose 10	9	6.392-977.0	38 ft.		311 °F	The high-quality and flexible high-pressure hose with rubber outer covering is suitable for use in combination with the iSolar TL 10. The outer skin of the hose features especially good sliding properties – ideal for extending and retracting the telescopic wand.
iSolar HP hose 14	10	6.392-976.0	49 ft.		311 °F	The high-quality and flexible high-pressure hose with rubber outer covering is suitable for use in combination with the iSolar TL 14. The outer skin of the hose features especially good sliding properties – ideal for extending and retracting the telescopic wand.
RM 99 solar cleaner	11	8.698-094.0				RM 99 Solar Cleaner is specific for cleaning solar and photovoltaic systems, and it's perfectly adapted to their unique surfaces. Its highly efficient, gentle on materials, biodegradable and removes even stubborn and greasy stains. It prevents the formation of limescale and maximizes the effectiveness of the system at minimum cost.

Please contact us for more information:

Kärcher U.S.A.

6398 N. Kärcher Way
Aurora, CO 80019
U.S.A.

Tel. 888-805-9852



www.karcher.com/us/professional



KarcherUSA



@kaercher_us_professional



karchercommercial



karcher-us



KarcherUSA