

**KÄRCHER**

# SIMPLY CLEANS

Uncomplicated, robust and reliable:  
our CW 1 Klean!Fit gantry car wash.  
[karcher.com](https://www.karcher.com)



# A SMART DECISION

A good car wash needn't be rocket science. With our CW 1 Klean!Fit gantry car wash you'll see that with just the basics, you can still offer your customers a lot.





Our CW 1 Klean!Fit is just right when you simply need to “get the job done”. Solid wash results and a high throughput with a manageable investment and good use of space. The workhorse of gantry car washes.

# THE PERFECT BASIS

The **CW 1 Klean!Fit** comes with elegant black stainless steel doors as standard. The traffic light (green and yellow arrows, stop signal) can be mounted on either the left or the right. An LED washing phase display is optionally available.

The **rear cover, in the same colour as the frame**, conceals the technical components and creates a tidy, streamlined look. This is particularly important in drive-through halls or at outdoor sites.

For gentle and effective cleaning, **roof and side brushes** are fitted with CareTouch material. Precise contour detection by the side brushes also ensures optimum washing results. An integrated splash guard above the roof brush reliably protects the hall ceiling and the roof dryer from splash water.

**CareTouch brushes** are made from specially foamed polyethylene and are contoured to ensure particularly gentle and effective dirt removal from the vehicle surface.

For extra cleaning power, with the **CareTouch Hybrid** option the lower side brushes are also coated with **polyethylene (PE)**. Alternatively, the entire system can also be fully fitted with PE brushes.

Regardless of the brush material chosen, we always recommend a high-pressure prewash.

**Wheel washes.** The disc wheel washer cleans rims gently and effectively, removing stubborn dirt such as burnt-on brake dust. High-pressure cleaning is available as an option.

**Dryer.** A fixed roof dryer with optional swiveling lamella follows the contours of the vehicle for perfect drying results. The side dryers also do the same on the vehicle sides.

# VEHICLE WASH CAN BE SO EASY

## EVERYTHING YOU NEED

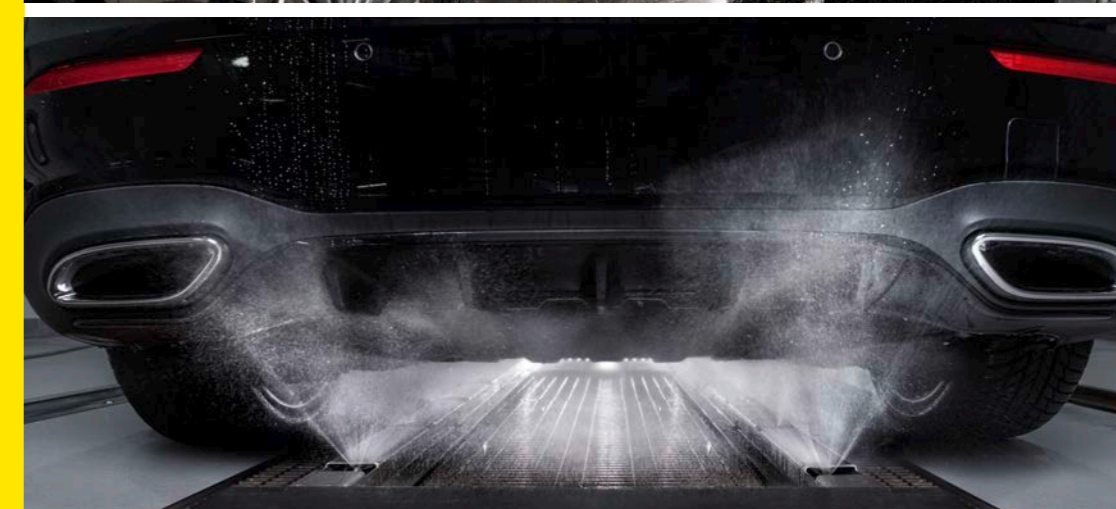
The equipment of the CW 1 Klean!Fit speaks for itself.

**Everything a gantry car wash needs.** Focusing on the basics, without compromise. Your CW 1 Klean!Fit has it all. No need for any extras. But you can always add more if you do need it. So simple. And so individual.

**Contour detection.** In forwards mode, the side brushes are placed at an angle of up to 12° diagonal to the vehicle so that the upper area is detected and cleaned effectively. In reverse mode, the side brushes move vertically as needed in order to clean the sill area effectively.

**The side brush splash guard** protects the surfaces around the wash area from the splash water produced by the rotating brushes.

**Safety features.** Front and rear safety switches are mandatory, if the prescribed safety distance between the wall and the gantry car wash cannot be maintained. If the safety switches are activated, the system stops immediately. This provides reliable protection both to people and the equipment.



**High-pressure prewash.** Wheel high-pressure as a standalone high-pressure option optimises the pre-cleaning of the rims and the sill area. If you are looking for even more efficient pre-cleaning of the side and sill areas, a combination of side and wheel high-pressure at 16 bar is the right choice. The wheel high-pressure is also optionally available as a standalone high-pressure option with 60 bar, either on-board or off-board.

**K!Contour** The (60 bar) contour-following, all-round high-pressure system operates in combination with the brush wash in a single pass and is therefore our recommendation for quick wash programmes.

**Underbody wash.** The option for additional sales, because there is scarcely a customer who doesn't take advantage of the thorough removal of dirt from the underbody of their vehicle. An ideal optional extra for vehicle maintenance and vehicle value retention – not only during road-gritting season, but all year round.



# PROGRAMMED TO CLEAN AND CARE FOR VEHICLES

Tough on dirt. Gentle on vehicles.

## Ex-works programmes

**Shampoo** is a key factor when washing with brushes if you want powerful cleaning that removes stubborn dirt but also washes gently.

**Drying aid** quickly breaks up the water film and must be applied during the rinsing cycle for perfect drying results on the vehicle.

## Other programmes

**Intensive precleaning** VehiclePro Klear!PreWash effectively removes insect residue and salt deposits and optimally prepares the vehicle for further cleaning.

**Foam wax** Provides outstanding protection against external conditions after rinsing as well as a long-lasting shine.

**Active foam** is a powerful foam that removes stubborn dirt with ease for superior cleaning results.

**Polish** produces a long-lasting shine and preserves the vehicle surface, protecting the vehicle from the elements for several months. Paintwork that has been well cared for this way helps to maintain the vehicle's value.

**Brush foam** Foamed VehiclePro Klear!Brush reliably removes stubborn dirt and starts opening up the water film for efficient drying during the brush wash.

**Quick wash** Enables washing and rinsing in one programme step for maximum efficiency. A full programme with two runs only takes around three minutes. Thanks to the built-in water saving function, reclaimed water is used for the washing process, while fresh water is used for the rinse cycle. This sustainable cycle saves time and resources. Ideal for car dealerships and car hire companies.

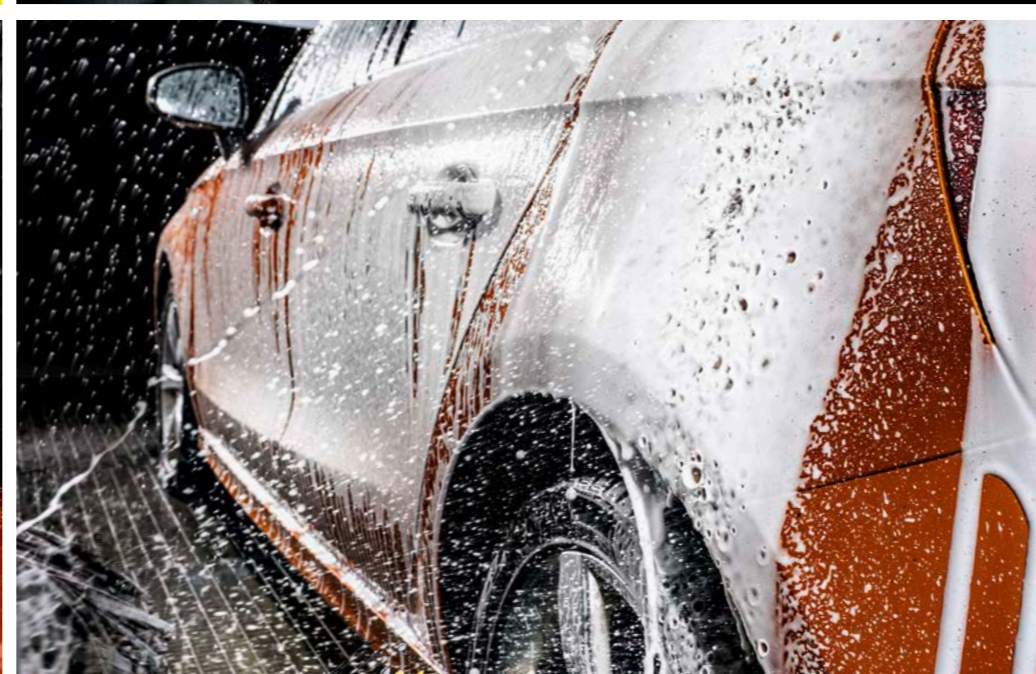
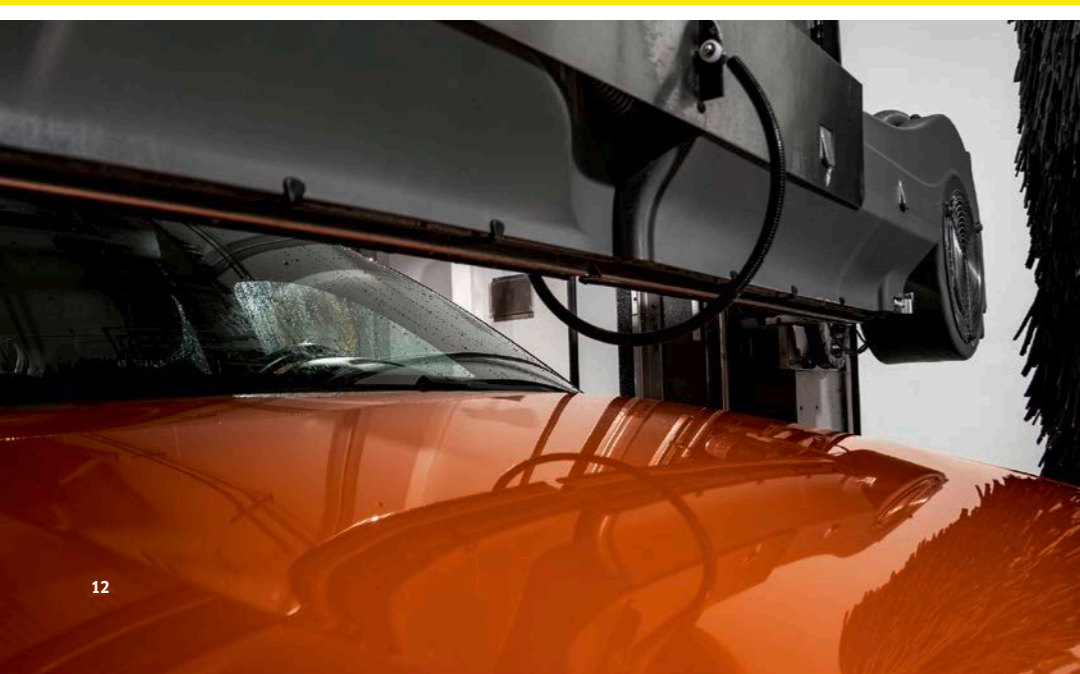
**Wax** is applied after the rinsing cycle for a beautiful shine and long-lasting protection against the elements.

**Rim cleaner** Removes stubborn dirt such as tyre wear, burnt-on brake dust and road salt gently and effectively.





**SIMPLY  
CLEANS**





# GET MORE DONE

Numerous options open up virtually unlimited possibilities for more success.

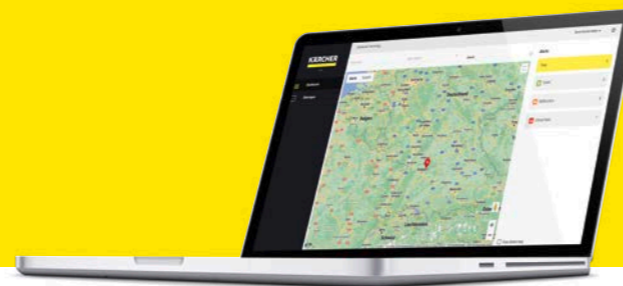


### Start and payment terminal

The K!Control start and payment terminal is the central interface for your customers. Here they can select the wash programme and pay quickly and easily. Intuitive operation and flexible payment options ensure a smooth start and a positive customer experience.

### Self-service vacuum cleaner

Our powerful self-service vacuum cleaner SB V K!Vac impresses with exceptional suction power, a modern design and a cashless payment option. Ideal for convenient and efficient vehicle interior cleaning.



### K!Connect

Our online system management platform gives you new ways to organise and control all your systems and sites.



### Air Tower

Here, your customers can check and adjust tyre pressure precisely up to 8 bar. The Air Water Tower also features a water dispenser - ideal for topping up windscreen washer fluid or coolant.



### Perfume Tower

Here, your customers neutralise unpleasant odours in the vehicle in an instant.



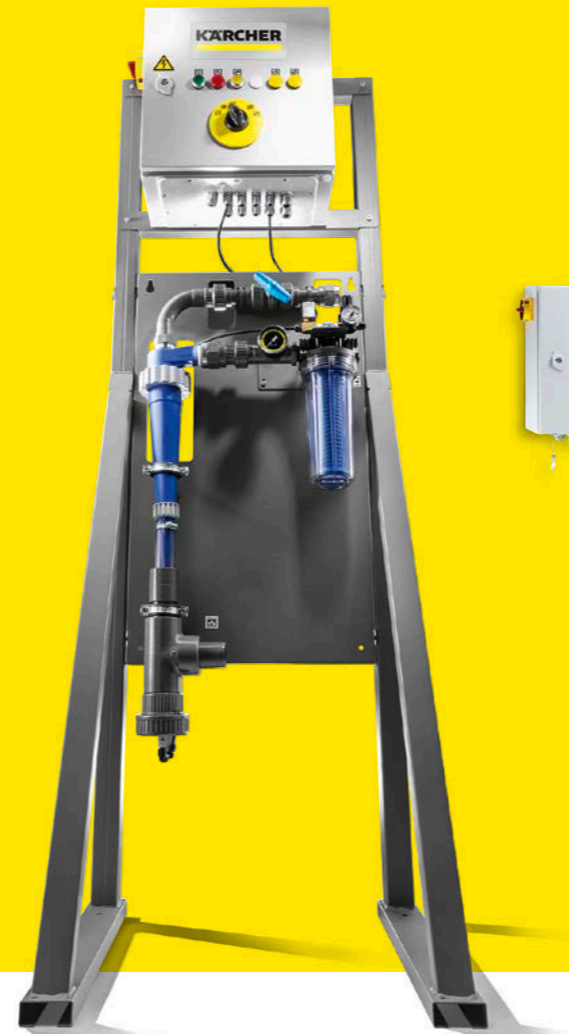
### Mat Cleaner

Our Mat Cleaner cleans floor mats measuring up to 80 cm in width without water. This is 20 cm more than traditional mat cleaners manage.

# DON'T JUST TALK



WRB Bio water reclamation system



WRP Car Wash water reclamation system



WRP 8000

Take action. Everyone's talking about environmental protection and sustainability. This is your and our contribution.

**WRB Bio** Water treatment through natural processes using microorganisms results in outstanding reclaim water quality and saves up to 98% fresh water. Thanks to this high process efficiency and degradation capacity of the bacteria, almost all the water can be reused. Other benefits for you include compact design and lower service costs.

**WRP Car Wash** With this system you save up to 85% fresh water. It recycles oil-free waste water economically and effectively without flocculation chemicals. You can reuse the recycled water for all wash programmes. This modular and flexible system gives you the optimal solution for almost every site.

**WRP 8000** Oil-free waste water is recycled efficiently and cost-effectively within the water recycling system thanks to proven sand filtration. This type of water treatment allows for fresh water savings of up to 85%. The treated water is suitable for reuse in all wash programmes. Thanks to the modular concept, the system adapts to your site conditions, providing a tailored solution for your requirements.

# GOODBYE DIRT. HELLO SHINE.



VehiclePro Klear!PreWash  
RM 890

VehiclePro Klear!Rim  
RM 896

Brush Shampoo Classic  
RM 811

Active Foam Classic  
RM 812

Drying Aid Classic  
RM 829

Foam Polish  
RM 837

Hot Wax Classic  
RM 820

For immaculate results

**VehiclePro Klear!PreWash RM 890**

The VDA-compliant pre-cleaner removes road dirt, grease and stubborn insect residue in the shortest possible time.

**VehiclePro Klear!Rim RM 896**

Extremely powerful premium rim cleaner for all coated alloy and steel rims.

**VehiclePro Brush Shampoo Classic RM 811**

is a powerful, wax-compatible brush shampoo that reliably removes grease, oils, emission dirt and insects. At the same time, it protects the vehicle surface by helping the brushes to glide smoothly over the vehicle.

**VehiclePro Active Foam Classic RM 812** is an ultra-powerful, high-lather active foam that loosens oils, grease and mineral dirt. At the same time, it protects the vehicle surface by helping the brushes to glide smoothly over the vehicle.

**VehiclePro Drying Aid Classic RM 829** effectively speeds up the drying process. It quickly breaks up the film of water over large areas for exceptional drying results.

**VehiclePro Foam Polish RM 837** is a wax offering long-lasting preservation and shine with added "repair effect" for your CW 1 Klean!Fit. It produces a perfect high-gloss finish and gives the paintwork effective protection against road dirt, acid rain, insects, road salt and other environmental factors.

**VehiclePro Hot Wax Classic RM 820.** This highly effective thermo wax forms a weather-resistant preservative layer that protects vehicles against corrosion. The high content of natural carnauba wax produces a dazzling shine.

# KÄRCHER

makes a difference

Please contact us for more information:

## Head Office Germany

Alfred Kärcher SE & Co. KG  
Alfred-Kärcher-Straße 28-40  
71364 Winnenden

Phone +49 7195 14-0  
Fax +49 7195 14-2212

[www.karcher.com](http://www.karcher.com)

## United Kingdom

TSG UK Solutions Ltd  
By Longforgan  
Dundee DD2 5HU

Phone +44 1382 361300

WashService.UK@tsg-solutions.com  
[www.tsg-solutions.com/uk/](http://www.tsg-solutions.com/uk/)

## Ireland

TSG UK Solutions Ltd  
By Longforgan  
Dundee DD2 5HU

Phone +44 1382 361300

WashService.UK@tsg-solutions.com  
[www.tsg-solutions.com/uk/](http://www.tsg-solutions.com/uk/)

## South East Asia

Karcher Southeast Asia Ltd  
1005 Srinakarin Road  
Suang Luang, Bangkok 10250  
Thailand

Phone +66 2021 2838  
Fax +66 2120 7575

[info.thailand@karcher.com](mailto:info.thailand@karcher.com)  
[www.karcher.com/th](http://www.karcher.com/th)

## Hong Kong

Kärcher Limited  
Unit 01, 22/F, Westley Square  
48 Hoi Yuen Road  
Kwun Tong, Kowloon

Phone +852 2 357-5863  
Fax +852 2 357-5632

[www.karcher.com.hk](http://www.karcher.com.hk)

## Australia

Karcher Pty Ltd  
385 Ferntree Gully Road  
Mount Waverley  
Victoria, AU 3149

Phone 1800 675-714  
(Free Call)

[www.karcher.com.au](http://www.karcher.com.au)

## New Zealand

Karcher Ltd  
66 Allens Road  
East Tamaki  
Auckland 2013

Phone +64 9 274-4603  
Fax +64 9 274-6932

[www.karcher.co.nz](http://www.karcher.co.nz)

## North Africa

Kärcher SARL  
Immeuble Yasmine Tower  
Bloc A 6ème étage, bureau A 6.6  
Centre Urbain Nord  
1082 Tunis  
Tunisia

Phone +216 36339020

[info@tn.karcher.com](mailto:info@tn.karcher.com)  
[www.karcher.com/tn/](http://www.karcher.com/tn/)

## East Africa

Kärcher Limited  
Muthangari Drive  
P.O. Box 40111-00100  
Nairobi  
Kenya

Phone +254 700085927

[info@ke.karcher.com](mailto:info@ke.karcher.com)  
[www.karcher.com/ke](http://www.karcher.com/ke)

## South Africa

Karcher (Pty) Ltd  
P.O. Box 1509  
2 North Rand Road  
Hughes Ext 72  
Boksburg  
1459 Johannesburg

Phone +27 11 657-7300  
Fax +27 11 657-7440

[www.karcher.co.za](http://www.karcher.co.za)

## Middle East

Karcher FZE  
Quality Cleaning Systems  
Jebel Ali Free Zone  
Plot No. S-10104 South Zone  
RA 08, XB 1, Jebel Ali  
Dubai

Phone +971 4 886-1177  
Fax +971 4 886-1575

[customercare@ae.karcher.com](mailto:customercare@ae.karcher.com)  
[www.karcher.ae](http://www.karcher.ae)

## Caribbean

Karcher S.R.L.  
Calle 5ta, esq. Calle 18, Nave 1  
Villa Aura  
Santo Domingo Oeste  
Dominican Republic

Phone +1 809 379-3700  
Fax +1 809 379-3777

[info@do.karcher.com](mailto:info@do.karcher.com)  
[www.karcher.com/do](http://www.karcher.com/do)