



# FIND THE RIGHT SOLUTION

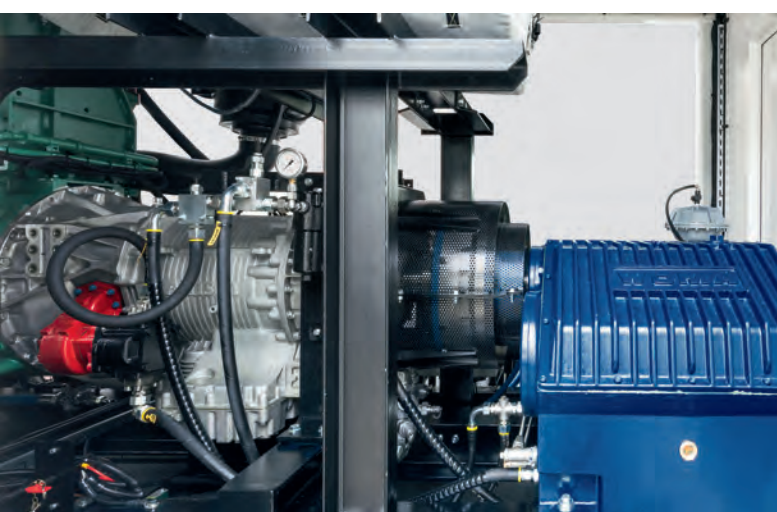
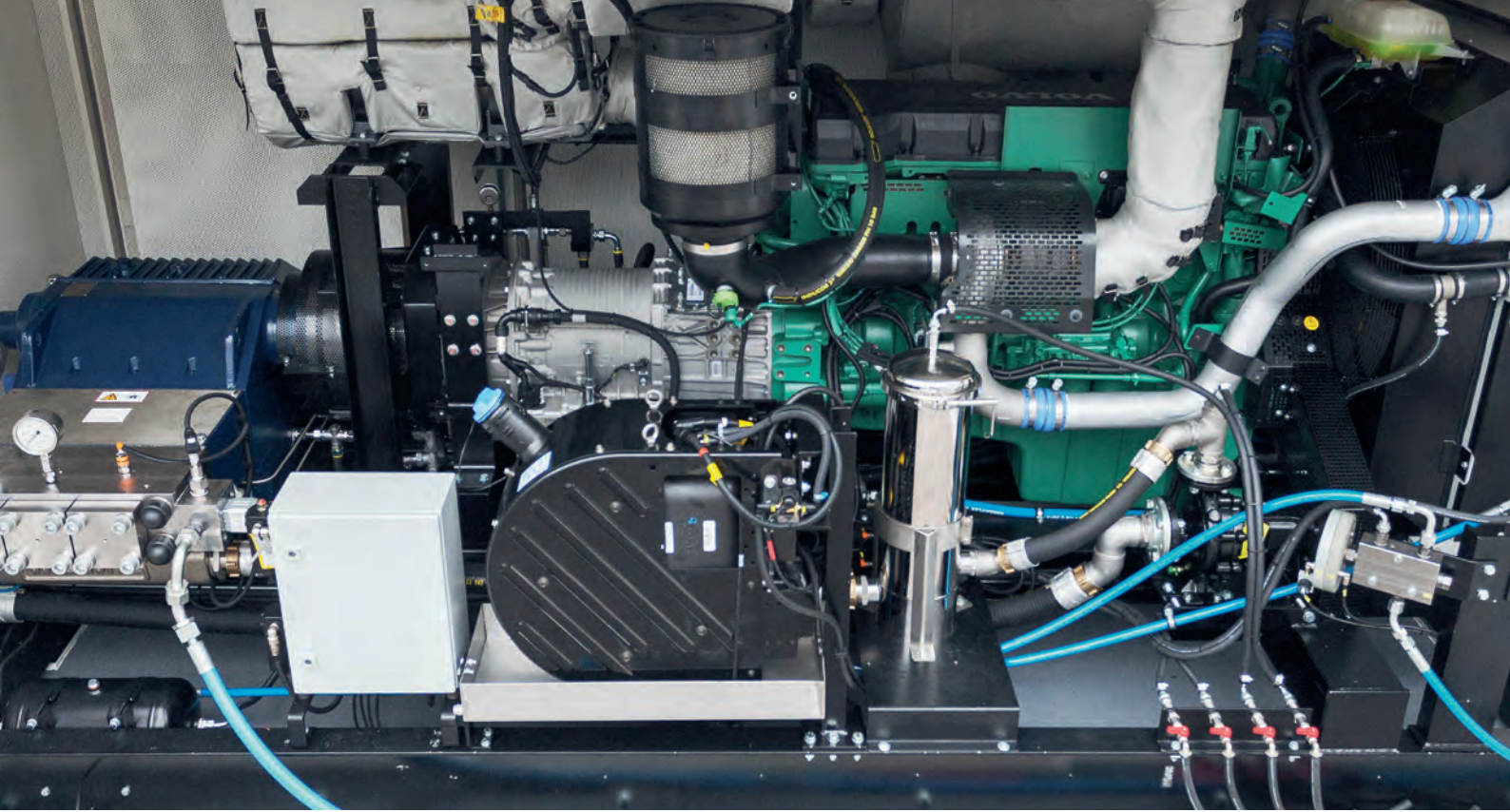
Your task is our job. Our systems are your solution.

# SOMETIMES MORE. SOMETIMES LESS. ALWAYS RIGHT.

You can regulate the EcoMaster ZWG via the integrated intermediate gearbox in a power range from 50 kW to 500 kW. You can thus cover the entire spectrum of high-pressure applications in industry and optimise the fuel consumption for each specific use.







## **WOMA EcoMaster D 700Z ZWG:**

- Reliable, multi-stage intermediate gearbox with over-drive function. With the lowest possible engine speed, for each respective application the right volume flow with minimum consumption is always available.
- User-friendly, intuitive control with 7" colour display. The switching process is controlled with pushbuttons on a display and takes place without load during operation.
- The speed reduction also lowers the sound emissions.
- Soft-start from idle: protects the pump, reduces wear and tear and increases the service life.
- Litre output and fuel consumption are continuously displayed. You have full control of the current operating costs.

# COMPACT. MOBILE. POWERFUL.

At bauma, you can experience our proven and further improved WOMA EcoMaster MK3 with intuitive control. The WOMA EcoMaster MK3 is a state-of-the-art, mobile ultra-high-pressure trailer machine for a large number of high-pressure water stream applications.







## WOMA EcoMaster MK3:

- Compact, powerful and efficient.
- Diesel drive of the latest exhaust generation.
- Up to 3,000 bar working pressure.



**You can also order the EcoMaster MK3 and the EcoMaster D 700Z ZWG with WOMA fleet management.**

You will then always know where and by whom your machine is being used. For this purpose, the machine data for the pump and the entire high-pressure system are processed to provide precise information in a dashboard.

# THE UHP EXPERTS

WOMA offers the widest selection of products for practically all applications in ultra-high-pressure cleaning. Innovative ultra-high pressure solutions are developed at the WOMA Competence Centre, from the compact cage machine with 1,000 bar working pressure and mobile trailer machines such as the EcoMaster MK3 with 3,000 bar, to the large unit with intermediate gearbox. With decades of experience in ultra-high-pressure technology, WOMA is the perfect complement to our Kärcher system.

**Head Office Germany**  
Alfred Kärcher SE & Co. KG  
Alfred-Kärcher-Strabe 28-40  
71364 Winnenden  
Tel. +49 7195 14-0  
Fax +49 7195 14-2212  
www.kaeercher.com

Please contact us for more information:

makes a difference

**KÄRCHER**



**WOMA**<sup>®</sup>

Kärcher Group

Please contact us for more information:

**Germany**

WOMA GmbH  
Werthauer Str. 77-79  
47226 Duisburg

P.O. Box 14 18 20  
47208 Duisburg

Tel. +49 2065 304-0  
Fax +49 2065 304-200

info@woma.kaercher.com  
www.woma-group.com

# THE WORLD MARKET LEADER

Where high-pressure cleaning is involved, the name Kärcher is used as another term for the application. Only very few companies have achieved this. And we are proud of it. As we are of the Kärcher system, with which we cover all cleaning tasks way beyond high-pressure cleaning.



# KÄRCHER

makes a difference



# FIND THE RIGHT SOLUTION

Your task is our job. Our systems are your solution.



# TIME IS CAPITAL

Construction is booming. The next order is waiting for you. And if you can save time in your work and cleaning, you are a winner. We have the right machines for you. Our unique cartridge filter for vacuuming wood shavings. Our HP trailers and the EASY!Force trigger gun.



PGG



WWP 45



HD 9/100-4



**Cartridge filter**



**EASY!Force**



**HD 9/23 Ge Tr 1**

# CARTRIDGE FILTER: BEST IN CLASS FOR WOOD DUST

Wood and fibre dust can clog conventional main filters in next to no time. Cleaning or replacing the filters is time-consuming and expensive. But not any longer.



**NEW**

**Exclusively  
from Kärcher**

Our cartridge filter was developed specifically for working with wood and other fibre dust from paper or plastic. Working in conjunction with the automatic Tact cleaning system, the filter keeps the suction power consistently high even when dealing with fine wood dust. Our cartridge filter fits into any single-motor Tact vacuum cleaner just like a regular flat pleated filter. And just like that, a Tact vacuum cleaner becomes a highly efficient specialised machine. Our cartridge filter may cost more than a standard filter, but in return it saves users having to buy filter bags or even a special vacuum cleaner. And it saves a lot of time.





# H AS IN “HIGHEST POSSIBLE SAFETY”

With some revolutionary products, you have to look a little harder to realise they will fundamentally change the game. Our new filter for dust class H has the potential to be the best in its class since it can be fully cleaned in our vacuum cleaners with an automatic Tact system.



**NEW**

**Suitable for  
asbestos**

Unlike anything you have seen before. And you can only get it at Kärcher: the first and only H filter worldwide for automatic cleaning at full Tact power. Our revolutionary Kärcher H filter for vacuum cleaners with a filter cleaning system features a Teflon coating with excellent cleaning properties. The Teflon is so smooth that dust literally slides off. And with a dust retention capacity of 99.995%, it easily complies with the strict requirements of dust class H. From now on, all of our new Tact H safety vacuum cleaners will feature our H filter. In this way, just like any safety-conscious user, you get the best solution worldwide for dusts that may be hazardous to health and any other kind of construction dust.



# TOP IN EVERY CLASS

Function and safety at a glance

## WOOD

Our brand new cartridge filter fits into any single-motor Kärcher Tact vacuum cleaner. The eight cartridges with PTFE coating work efficiently for wood and fibre dust of any kind. Certified for dust classes M and L. Guaranteed dust separation rate: 99.9%.



**CARTRIDGE FILTER**  
Teflon

**Dust class: M + L**

**Application:**  

**Dirt types:**

**Fibre dust**

- Fibre dust with a strong tendency to clog
- In particular dust from wood, paper, plastic, etc.

**Dirty liquids\***

### Customer benefits

- Enables fibre dust vacuuming without a filter bag for the first time
- High suction power guaranteed (no clogging)
- Moisture and rot resistant

## SAFETY/HEPA

The first cleanable H filter for wet and dry vacuum cleaners. Single-stage and available exclusively from Kärcher. Certified for dust class H. Guaranteed dust separation rate: 99.995% (HEPA).



**HEPA**  
Fibreglass/PTFE

**Dust class: H**

**Application:**  

**Dirt types:**

**Hazardous dusts**

- Mould, viruses, bacteria, germs
- Asbestos, lead, nickel

**Dirty liquids\***

**Explosive dusts (Zone 22)**

- Paper dusts, flour dusts
- Metal dusts

**Dirty liquids\***

### Customer benefits

- Suitable for vacuuming hazardous and explosive dusts
- The new PTFE H filter is the first cleanable H filter on the market. It therefore enables vacuuming of large quantities of fine dust without a filter bag
- A safety filter set or disposal bag is required for vacuuming hazardous dusts

It has never been safer to show true colours. Our main filters are colour-coded to indicate their intended purpose. Brown signifies wood and general fibre dust. Red indicates HEPA. Black denotes the toughest applications. Blue means they can be used anywhere. And green stands for dry dust and high cost-effectiveness.



We have the best filter solution for applications that create a great deal of dust, for example sanding fresh concrete or working with toners: our PTFE filter. Can be used in all new NT Tact models. Certified for dust classes M and L. Guaranteed dust separation rate: 99.9%.



**PTFE**  
Teflon

**Dust class: M + L**

**Application:** 

**Dirt types:**

**Problematic dusts**

- Mineral dusts with high residual moisture
- Fresh concrete, paint and tile adhesive residue

**Dirty liquids\***

**Customer benefits**

- Moisture and rot resistant
- Even more cost-effective thanks to longer filter service life
- High suction power guaranteed (no clogging)



Our new NT Tact vacuum cleaners feature these PES filters as standard, offering excellent results for both wet and dry applications. Certified for dust classes M and L. Guaranteed dust separation rate: 99.9%.



**PES**  
Nano

**Dust class: M + L**

**Application:** 

**Dirt types:**

**Conventional fine dust**

- Household dust, abraded particles, stone granules

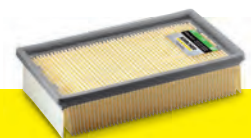
**Dirty liquids\***

**Customer benefits**

- Moisture and rot resistant
- Even more cost-effective thanks to longer filter service life
- Ideal for frequent switching between wet and dry vacuuming



These paper filters are an excellent choice for dry applications, including in terms of price. Can be used in all new NT Tact vacuum cleaners. Certified for dust classes M and L. Guaranteed dust separation rate: 99.9%.



**PAPER**  
Cellulose

**Dust class: M + L**

**Application:** 

**Dirt types:**

**Conventional fine dust**

- Household dust, abraded particles, stone granules

**Customer benefits**

- High suction power when vacuuming fine dust
- High rate of dust retention
- The filter must be dried after vacuuming liquids!

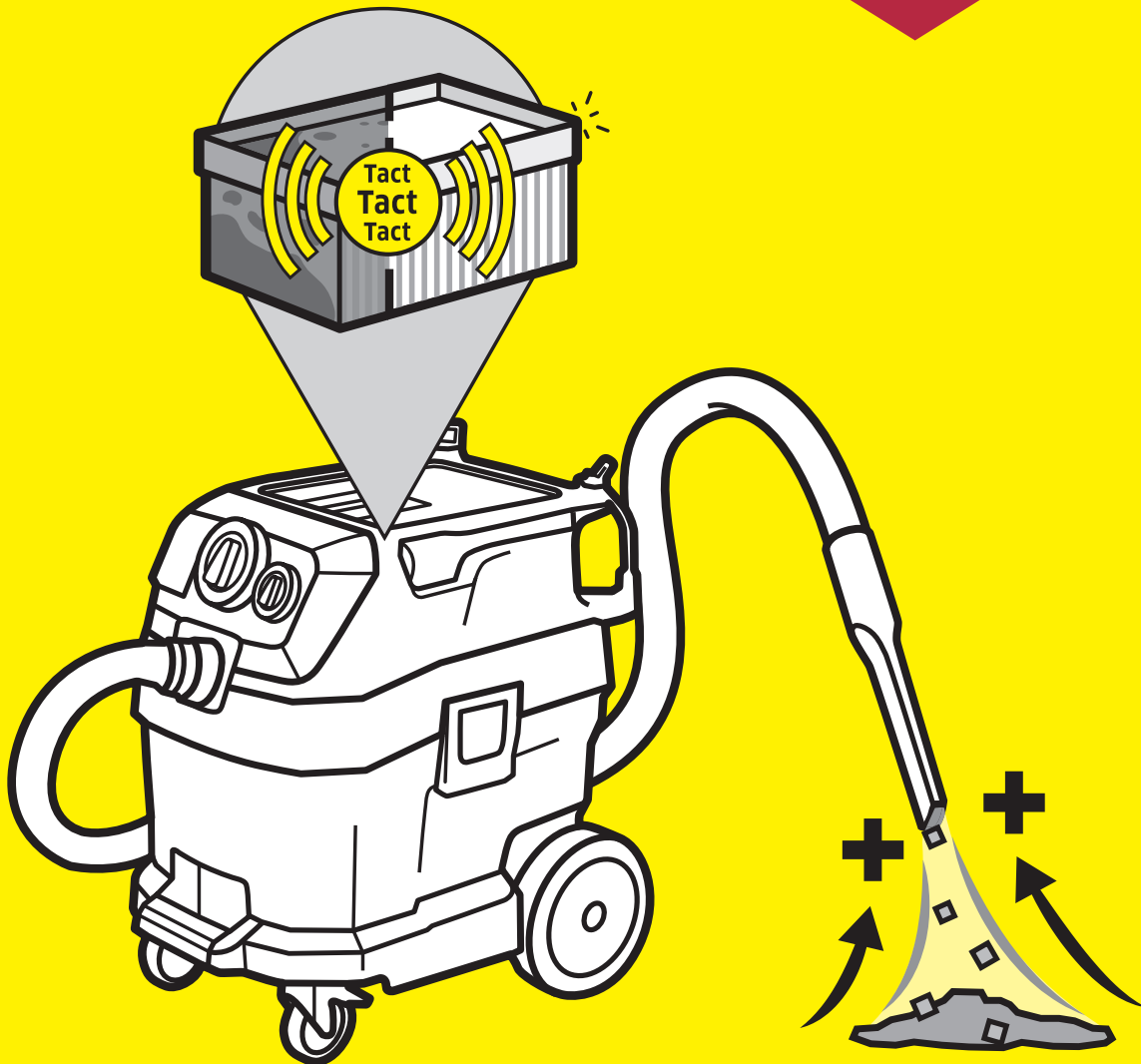
\* e.g. coolants/lubricants or cutting fluids, wet industrial waste from the food/construction industry (except acids and oils).



# SAFETY VACUUM CLEANER - NEXT GENERATION

With the new Tact range, we've thought of everything that's important to professional users: outstanding suction power, simple and comfortable operation, as well as durability and longevity.

OUR NEW  
Tact CLASS





**Our tried-and-tested Tact filter cleaning system is now even quieter and more efficient.** Outstanding innovations are integrated in the turbine and filter engineering. Our ground-breaking cartridge filters, the use of PTFE filter materials and revolutionary flat pleated filters protect the health of millions of users better than ever before.

#### **BG Bau support options**

Construction site dust collectors are safety vacuum cleaners with a plug socket for operating power tools directly and are particularly well suited to general applications on construction sites. BG Bau offers financial support for all construction site dust collectors which meet the requirements of dust class M as a minimum and can therefore be used on construction sites to remove mineral dust containing quartz.

BG Bau offers max. €300 for construction site dust collectors of dust class M with an extended warning system. For all other construction site dust collectors, a maximum of €200 is available.

# BECOME INDEPENDENT

Where there's no electricity but you need to pump large quantities of dirty water, you are professionally set up with our generators and the waste water pump.



Our PGG generators and WWP 45 waste water pump with engines in compliance with EU STAGE V generate electricity with max. 7 kW and pump up to 100,000 litres of waste water on one tank of petrol anywhere and without interruption for up to 12 hours. Mobile, convenient and safe. Reliable, economical and environmentally friendly. And with our modern service packages, you get even more reliability and independence.





## PGG 8/3, 6/1 AND 3/1 ELECTRICITY GENERATORS:

- Reliable, synchronous generators with petrol engines in compliance with EU STAGE V and electro start.
- Continuous power between 2.8 and 7 kW – single-phase or three-phase, depending on the machine version.
- D.C. output (12 V).
- Display showing operating status.
- Large fuel tanks for runtimes from 5.5 to 12 hours.
- AVR technology keeps the voltage constant.
- Puncture-free tyres and folding push handle ensure optimum manoeuvrability.
- Overload protection and oil level check.
- Versatile applications in the construction industry, for example to operate power tools and electric high-pressure cleaners.



## WWP 45 WASTE WATER PUMP:

- Independent of the mains power supply.
- Powerful petrol engine in compliance with EU STAGE V with reliable manual pull starter.
- Runtime at least 2.2 hours or 100,000 l of water at 750 l/min.
- Excellent performance: up to 7 m suction height, up to 25 m delivery height.
- Pumps particles of up to 30 mm diameter and is thus also suitable for water containing coarse dirt.
- Robust steel frame.
- Compact design and lightweight.
- For versatile use in the construction industry, e.g. to pump construction pits dry.

# ALMOST AS EASY AS HANDS-FREE

**The patented way to make work much easier**

Our EASY!Force high-pressure gun defines a new dimension of ergonomics in high-pressure cleaning. Nothing less, no exaggeration. Both the patent and independent testing confirm this.







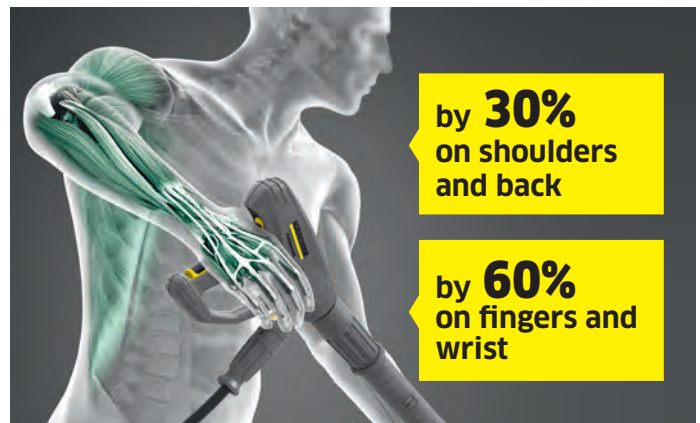
## TOP INNOVATION EASY!Force HP TRIGGER GUN:

- No holding force required, which protects joints, muscles and the entire body, lowers the risk of injuries caused by fatigue and prevents arthritis.
- The huge reduction in rotary motion benefits the back in particular.
- The entire work process is more targeted and relaxed. This significantly lowers the risk of injuries, particularly those caused by fatigue.
- EASY!Force doesn't just pay off for your health – the results of your work will also improve, with less need for unplanned breaks.
- When using EASY!Force, the hand remains in a relaxed, neutral position and fingers are unbent.
- Our EASY!Force HP trigger gun was awarded the “DLG-Anerkannt” and “VDE Geprüft Ergonomie und Handhabung” test marks by the German Agricultural Society (DLG) and the VDE Association for Electrical, Electronic and Information Technologies.

## ERGONOMICS IS NO GAME

Ergonomics is a fundamental way to protect people and their health. Occupational health and safety laws consistently require user protection during strenuous activities such as work using a high-pressure cleaner. In future, companies will have to indicate work strain individually and offer employees corresponding compensation, for instance monetary rewards, breaks or early retirement. This is an area in which our EASY!Force HP trigger gun offers many advantages compared with conventional HP trigger guns.

### The open position of the hand reduces the effort:





# INDEPENDENCE AND RELIABILITY ON THE ROAD

## **Become independent**

Our HP trailers make it possible to use powerful high-pressure technology even in locations without a power or water supply. Durability, reliability and efficiency also top the list of features for this concept. Many components come from tried-and-tested high-pressure cleaner model series. Operating the machine is very simple. Configuration options make the trailer your custom machine. And since the maximum drawbar load is 75 kg, you can use nearly any car to tow the trailer.

Kärcher HP trailers are highly mobile thanks to short set-up times, very comfortable due to electro start and simple operation, and self-sufficient and flexible with their large water tank and hose reel. Fuel-efficient and clean engines in line with EU STAGE V ensure superior performance with minimum consumption and emissions. Operating the machine is just as simple and convenient as with all Kärcher cleaning machines with EASY Operation. And you can even configure your HP trailer to match your individual requirements. That includes being able to opt for a forklift-compatible platform rather than a trailer.







## IMPRESSIVE SPECIAL FEATURES:

- Integrated 1,000 l water tank for up to one hour of independent cleaning (two hours with reduced flow).
- Yanmar diesel engine rated at 7.4 kW or Honda petrol engine rated at 9.5 kW.
- Noticeable reduction in fuel consumption and minimised emissions thanks to automatically decreasing speed.
- Spacious storage compartments for accessories, tools, cleaning agents, etc.
- Trailer version: HP on chassis with water tank.
- Cab version: HP on frame with forklift pockets and water tank.
- EASY!Force high-pressure gun with servo control: infinitely variable pressure/water volume adjustments at the turn of the handle.



# THE SIMPLEST. THE MOST COMPACT. IT'S YOURS.

## Controlled power in a mobile cage

Our HD 9/100-4 offers you the simplest and most compact introduction to the 1,000 bar class and the UHP market. This modern cage machine combines the best from two experts: the typical Kärcher user-friendliness and the extremely robust pump engineering – typical for WOMA. To operate, there is only the ON/OFF switch – it couldn't be simpler.

By means of the HP trigger gun with the advanced dry closing valve (Dry Shut), you can handle the ultra-high pressure as with a normal high-pressure cleaner. This is decisive, because our HD 9/100-4, with an actual working pressure of 1,000 bar and a water flow of 980 l/h, is one of the most powerful UHP high-pressure cleaners in the 30 kW class. And at only 392 kg, also one of the lightest.







## MOBILE, COMPACT, SAFE: EVERYTHING IS “ULTRA” WITH THE HD 9/100-4

- Ultra-strong: the new ultra-high-pressure pump developed by our WOMA Competence Centre provides up to 980 l/h (16.3 l/min) at 1,000 bar operating pressure. Ideal for many industrial areas of application.
- Ultra-robust design and high-quality materials for a long service life, even under the highest loads.
- Ultra-compact: the new UHP pump combines compact design with a high level of service-friendliness.
- Ultra-mobile: four large wheels for easy manoeuvring, crane hooks, transportable with a fork-lift truck.
- Ultra-safe: our brand-new 1,000 bar protective suit meets all safety standards.

