

KÄRCHER

makes a difference



EFFICIENT CLEANING SOLUTIONS

PROFESSIONAL | TRANSPORT - LOGISTICS





FOR A CLEAN WORKING ENVIRONMENT

Logistics is all about timing and precise coordination. The necessity of cleaning storage areas, vehicles and offices should not interfere with schedules. Solutions are needed that are not an additional burden, but help to clean quickly and efficiently. This is where Kärcher can help – with high-performance cleaning systems, sound advice and excellent service – to keep your business on track in a clean working environment.

1 Partner for logistics companies
Kärcher is your partner for tailor-made solutions. Put your trust in Kärcher quality, efficiency and service.



2 Warehouses and cargo handling areas

Whether for indoor or outdoor storage areas: Kärcher has the right solution for every task, for fast and effective cleaning.

Page 6

3 Commercial vehicle and tank cleaning

Fast manual wash systems, single-brush wash systems, automatic commercial vehicle wash and tank cleaning systems. There is a clean solution for every type of vehicle.

Page 10

4 Special applications and office cleaning

Whether planes, ships or offices – Kärcher high-performance systems make cleaning easy.

Page 12

KÄRCHER – YOUR RELIABLE PARTNER

In the logistics sector, cleaning also requires coordinated processes. This demands not only for high-performance systems, but also for a consulting partner with expertise and experience. The final cleaning result depends not only on technical parameters, but also on other important factors, e.g. local conditions and types of vehicle. Kärcher will provide cleaning solutions tailored to your needs.



Reliable. Intelligent. Kärcher.

You can rely on Kärcher – because our systems are all compatible and each product is rigorously tested. Kärcher systems are renowned for their reliability and suitability for numerous cleaning tasks.

Our machines are designed for ease of use without interrupting logistics processes. This allows quick and easy cleaning. Maintenance is simple and can be carried out without any previous knowledge.

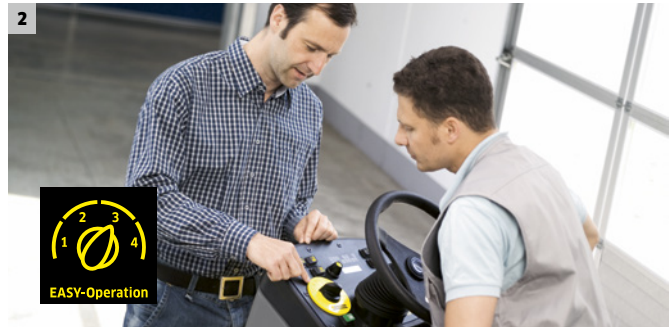


1 You can count on us

Heavy pallets, fast workflows – logistics is a tough working environment. This is why Kärcher develops cleaning solutions that are designed to last. All products are subject to intensive quality controls to ensure that they meet all requirements.

2 Easy to use

Nothing is more time-consuming than machines that are difficult to operate. Kärcher avoids elaborate procedures to ensure trouble-free cleaning. For example with "Easy Operation": just one control for all functions.



3 Developed for more efficiency

Kärcher develops detergents that are compatible with its cleaning systems. They guarantee a powerful cleaning with low consumption. This avoids unnecessary costs and protects the environment through fewer contaminants.

4 Everything from one source

If everything fits together, it's Kärcher. As a system provider, Kärcher not only offers innovative cleaning technology, but also detergent and water treatment systems. Matching accessories complete the range. The benefits: Everything is perfectly coordinated so that you can work even more efficiently.

THE BEST CLEANING SYSTEMS FOR WAREHOUSES

The area of logistics is very busy – with a high cleaning demand. Packaging residues, waste paper and vehicle tyre marks can be removed quickly and effortlessly with high-performance and robust Kärcher scrubber driers, vacuum sweepers and wet and dry vacuum cleaners. These compact machines are designed for easy manoeuvrability. Numerous variants are available – from battery-operated drives to canopies.



Scrubber driers

Whether walk-behind, stand-on or ride-on – floors are hygienically clean. Thanks to their compact size, you can even clean between high-bay racking.



Vacuum sweepers

Economical, clean, fast and efficient on all surfaces. A wide range of machines for all requirements.



Wet and dry vacuum cleaners

These vacuums effortlessly pick up all kinds of dirt. Whether dry, wet or liquid – Kärcher vacuum cleaners pick up everything.



Cleaning and maintaining floors

Kärcher detergents are highly effective for quicker, easier and convenient cleaning.



1 Safe in tight spaces

Safe cleaning in narrow aisles and between high-bay racking – not a problem for Kärcher machines. Compact machines ensure maximum manoeuvrability and canopies provide the necessary safety. A high area performance of up to 12,000 m²/h.



2 Conveyor systems

Conveyor systems are constantly in motion – and therefore also continually lead to soiling. Whether packaging materials, slips of paper or grit from containers: Kärcher machines, e.g. compact wet and dry vacuum cleaners or walk-behind vacuum sweepers or scrubber driers, quickly remove all unwanted material without interrupting operation.

3 Cold storage

Sensitive hygienic areas require optimal consultation and a precise cleaning plan. Because bacteria, viruses and fungi are everywhere. With this in mind, Kärcher offers the appropriate cleaning and disinfectant agents. Your complete solution from one source.

GREAT PERFORMANCE ON LARGE AREAS

Outdoor areas are not only subject to dirt produced in daily work operations, but also to environmental influences. Vehicle deposits, mud, dust, rain and snow are easily removed with high-performance Kärcher machines. Ride-on sweepers with an area performance of up to 23,520 m²/h clean almost any area easily – and with high pressure cleaners and water flow rates of up to 1,300 l/h, even the most stubborn dirt is quickly removed.



1 Outdoor areas

On large areas, cleanliness is essential for safety. Continuous material handling and environmental influences demand fast and effective cleaning solutions. With the high area performance of Kärcher ride-on machines, large outdoor areas and storage areas are effortlessly cleaned without interrupting or delaying routine logistics procedures.

Where wood is chopped, splinters must fall. Even in timber yards and steel storage areas, the residues of daily work can be quickly removed with Kärcher vacuum sweepers. Ride-on machines are ideal for cleaning large areas or walk-behind machines for smaller spaces. Dangerous dusts can be safely removed with a large capacity industrial vacuum.



Machine power

Ride-on sweepers offer a very large area performance. And thanks to four different drive variants, there is one for every cleaning task.



High-pressure power

With high pressure and a high flow rate. And higher temperatures ensure greater cleaning efficiency. With the high performance of stationary machines.



Suction power

Kärcher industrial vacuum cleaners for the toughest jobs: from compact vacuums for mobile use to superior class large capacity vacuums.



2 Pallet warehouses

When pallets have to be transported quickly and safely, cleanliness is vital. Because dirt is a stumbling block in routine operations. Kärcher sweepers are ideal for keeping outdoor storage areas constantly clean. Cleaning with Kärcher is quick, efficient and convenient.

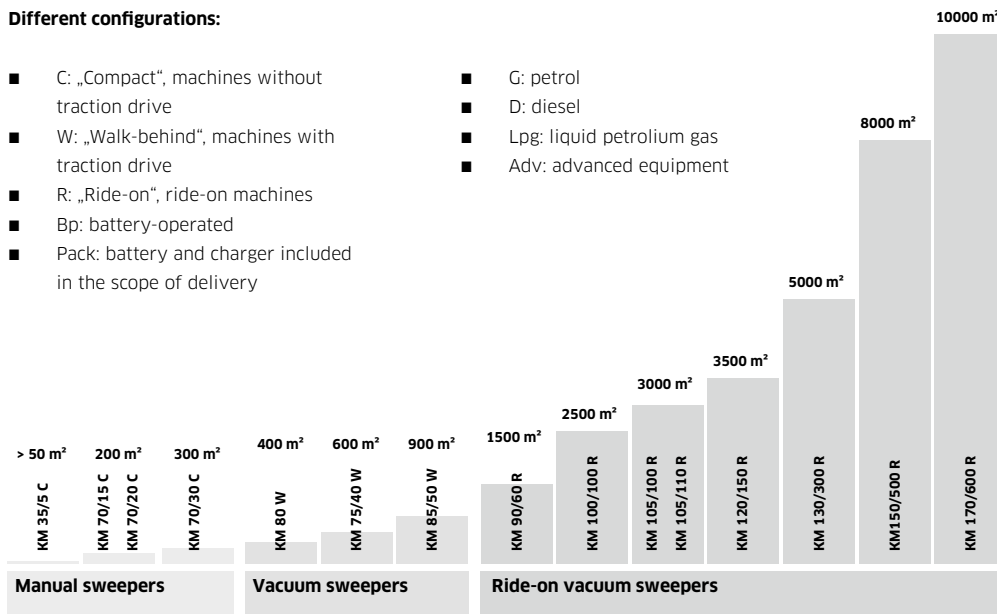


3 Loading docks

Arrivals and departures, loading and unloading – the loading area is constantly in use. Dirt collects here on a daily basis. A Kärcher high-pressure cleaner is the right solution. It easily removes stubborn residues, gets into tight corners and cleans quickly.

Different configurations:

- C: „Compact“, machines without traction drive
- W: „Walk-behind“, machines with traction drive
- R: „Ride-on“, ride-on machines
- Bp: battery-operated
- Pack: battery and charger included in the scope of delivery
- G: petrol
- D: diesel
- Lpg: liquid petroleum gas
- Adv: advanced equipment

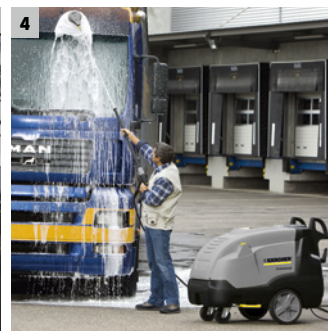
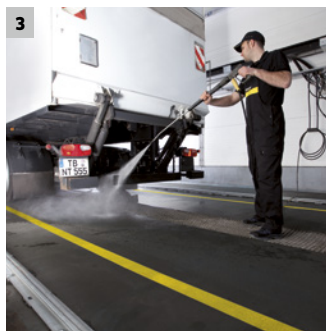


Economical in use

See how cost-effective cleaning can be. Area size, volume and cleaning frequency are decisive. The use of the following Kärcher sweepers and vacuum sweepers is cost-effective when the area to be swept per hour is as indicated in the performance columns on the left.

POWERFUL PERFORMANCE FOR ALL KINDS OF COMMERCIAL VEHICLES

A clean fleet – to keep the move. Kärcher offers optimal systems for quick, easy and efficient cleaning of commercial vehicles, for example, the Kärcher TB. The gantry wash system for efficient vehicle cleaning. Kärcher offers mobile single-brush wash systems, suitable detergents and cost-saving water treatment systems. Kärcher meets all demands with ease.



1 Economical and efficient for large vehicle fleets

The wash system for regular maintenance of various commercial vehicles. Easy to operate, modular and with reliable technology. The Kärcher TB – fast, thorough, efficient.

2 Profitability for small vehicle fleets

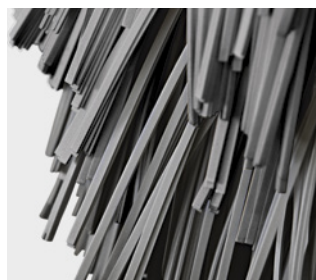
Simple, quick and economical: the RBS 6000 mobile single-brush wash system. It is moved around the vehicle and the rotating brush effectively removes all dirt.

3 Cleaning couldn't be more thorough

Effortlessly clean difficult to reach areas: Kärcher high-pressure cleaners are ideal for cleaning wheel arches, vehicle chassis and spaces between cabs and trailers.

4 The right accessories for every task

Achieve more with Kärcher accessories, e.g. with the rotating wash brush. Driven by the power of the water jet, it gently removes fine dust and grime from all surfaces.



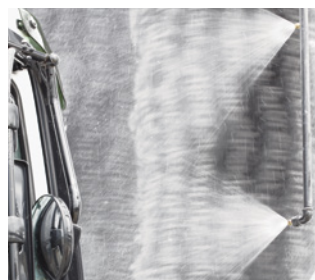
Gentle brushes

Ideal for buses: the tried and tested Carlite® brush is gentle on paintwork.



Easy to use

The Kärcher TB washing programs can easily be selected via the control.



Perfect cleaning results

An effective chemical pre-spray system cleans with a high-pressure system with up to 60 bar pressure.

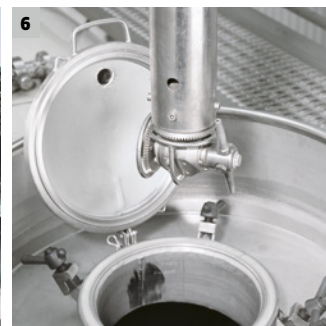
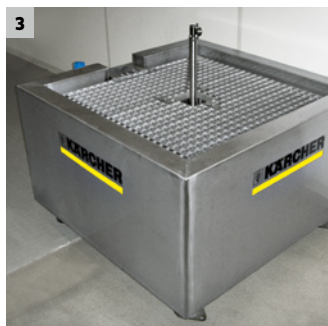


Intelligent design

The aluminium RBS 6000 can easily be manoeuvred and the half screen prevents splashing.

CUSTOMISED TANK CLEANING SOLUTIONS

For more than three decades, Kärcher has enjoyed a reputation of being a provider of reliable, efficient and customised tank cleaning system solutions. Kärcher modular systems offer a choice of high-pressure pumps, cleaning heads and PLC control. Kärcher offers an all-inclusive service – from planning, construction and system maintenance.



1 A clean solution for every size

Liquids and solids, as well as hazardous products are reliably removed with these modular tank and silo container cleaning systems.

2 Cleaning in one pass

Tank wagons are cleaned on the inside with three-dimensional rotating nozzles. This Kärcher cleaning system cleans tank wagons up to a length of 24 m.

3 Maximum cleaning results

Kärcher standard components for cleaning light drums. Up to 200 bar pressure for excellent cleaning results.

4 Perfect results for standard sizes

The cleaning solution for IBC containers with different types of soiling. IB containers are thoroughly cleaned with water temperatures up to 90 °C.

5 Effective cleaning for long containers

Kärcher offers the perfect cleaning system for 20ft containers. Containers are thoroughly cleaned using suitable detergents.

6 Ideal for all kinds of dirt

Kärcher systems clean containers in all shapes and sizes and all types of soiling without leaving residues. Alkaline and acidic detergents from Kärcher are fully compatible with the system and ensure optimal cleaning results.

FOR SPECIAL APPLICATIONS: KÄRCHER SOLUTIONS

Kärcher offers special systems for planes, sea vessels or trains. Stubborn dirt is quickly removed. For example, with innovative ultra-high-pressure systems with up to 2,500 bar pressure or advanced ice blasters that are gentle on surfaces and hard on dirt. With Kärcher you are well equipped, even in extreme situations.



1 Ship and container cleaning

Whether algae or barnacles adhering to the hull or soiled containers on deck – the Kärcher UHP series gets everything shipshape in no time. Even rust can easily be removed with the appropriate cleaning devices and special nozzles.



2 Ready for take-off in no time

Kärcher also offers innovative system solutions for gentle exterior and interior cleaning of planes.



3 One-stop solution for cleaning trains

Kärcher also offers a wide range of cleaning technologies for freight trains. The range includes high-performance machines, particularly gentle processes and extremely safe systems.



Extremely gentle

Iceblaster: Innovative blasting process using dry ice for removing stubborn dirt without damaging surfaces.



Extremely robust

Cage machines: High-performance to be used almost anywhere. With petrol engine – suitable for use where there is no mains supply.



Incredibly strong

Mobile UHP trailer: Hot or cold water ultra-high-pressure cleaners with up to 2,500 bar pressure are suitable for almost any job.

OFFICE CLEANING ACCORDING TO PLAN

Kärcher offers the perfect office cleaning solution – from basic cleaning to polishing. Kärcher machines are easy to use, whisper quiet and safe. A wide range of accessories extend the range of applications. ECO!Cleaning is the choice of professionals. A complete system designed to optimise contract cleaning.



1 The innovative BRC series

From refreshing interim cleaning to intensive basic cleaning of textile coverings. Kärcher offers everything from a single source.

2 Dry vacuuming like a professional

Developed with contract cleaners, this professional series offers the benefits of high suction power and a 5-stage filter system.

3 ECO!Cleaning and suitable detergents

Specially developed to facilitate contract cleaning: increases productivity, reduces costs and protects the environment. Kärcher detergents are ideal for cleaning without damaging surfaces.

4 Removes dirt deep in the pile

Ideal for passageways and offices with carpet: deep cleaning with Kärcher upright vacuum cleaners.

5 Mobile cleaners

Easy to use, robust and powerful carpet cleaners feature an extensive range of accessories for numerous tasks.



Upright vacuum cleaners

Powerful suction combined with an electric brush. Effortlessly removes stubborn dirt particles.



Carpet cleaners

Kärcher carpet cleaners provide excellent cleaning results on textile surfaces. Whether in offices, corridors, conference rooms, etc. The right solution for all areas.



Dry vacuum cleaners

Compact and extremely quiet: Small, mobile dry vacuum cleaners combine convenience, powerful suction and a large working radius.



Spray extraction cleaners

Ideal for thoroughly cleaning all textile surfaces by spray extraction – powerful and versatile.

LIST OF PRODUCTS

Cleaning machines		High-pressure cleaning	Sweepers and vacuum sweepers	Vacuum cleaners	
Application					
Storage area cleaning			KM 150/500 R, KM 130/300 R, KM 120/150 R, KM 105/110 R, KM 105/100 R, KM 90/60 R, KM 85/50 W, KM 75/40 W, KM 70/30 C	NT 70/3 / Me / Tc, NT 70/2 / Me / Tc, NT 70/2 Tc, NT 65/2 Tact ² , NT 65/2, NT 55/1 Tact, NT 45/1 Tact Te EC, NT 45/1 Tact, NT 35/1 Tact M, NT 35/1 Ap, T 17/1, T 12/1, T 10/1 Professional	
Office cleaning			KM 75/40 W Bp Pack (Carpet Kit), KM 35/5 C	T 17/1, T 12/1 ecoefficiency, T 12/1, T 10/1 Professional, T 7/1, CV 38/2	
Cleaning outdoor areas		HDS 2000 Super, HDS 13/20-4 S / SX, HDS 12/18-4 S / SX, HDS 8/18-4 M / MX, HD 13/18-4 S / SX Plus, HD 13/12-4 ST, HD 9/20-4 MX Plus, HD 7/18-4 MX Plus, HD 6/16-4 MX Plus, HDC Classic / Adv	KM 170/600 R, KM 150/500 R, KM 130/300 R, KM 120/150 R, KM 105/110 R, KM 105/100 R, KM 90/60 R, KM 80 W, KM 75/40 W, KM 70/30 C, KM 70/20 C, MC 50	NT 70/2 (Me) Tc, NT 55/1 Tact	
Commercial vehicle cleaning		HDS 2000 Super, HDS 13/20-4 S / SX, HDS 12/18-4 S / SX, HDS 9/18-4 M / MX, HD 13/18-4 S / SX Plus, HD 13/12-4 ST-H, HD 9/20-4 MX Plus, HD 6/16-4 MX Plus, HDC Classic		NT 70/2 / Me / Tc, NT 65/2	

Scrubber driers	Vehicle wash systems	Detergents	Tank cleaning	Water recycling	Spray extraction cleaner/Carpet cleaner
					
B 250 R, B 150 R, B 90 R, B 95 RS, BR 55/40 RS, B 120 W, B 80 W, B 60 W, BD 50/40 RS, B 40 C/W		RM 752, RM 740, RM 781, RM 69 ASF, RM 751, RM 776, RM 750			
BRC 30/15 C, BRS 43/500 C, BR 40/25 C, BR 40/10 C, BR 35/12 C, BR 30/4 C, BD 38/12 C, Eco Spray Mop, Clean Liner Classic		RM 780, RM 746, RM 748, RM 730, RM 743, RM 760, RM 768, RM 755, RM 764, RM 720, RM 724, RM 736, RM 738	CA 30, CA 40, CA 50		Puzzi 30/4, Puzzi 10/2, Puzzi 10/1, Puzzi 8/1 C
B 250 R					
	TB 50, TB 46, TB 42, TB 36, RBS 6014, RBS 6012	RM 760, RM 804, RM 805 ASF, RM 811 ASF, RM 821 ASF, RM 833, RM 800 ASF, RM 801 ASF, RM 841 ASF	Module-based systems: HKF 200, HKS 100, HKF 50, HWE 4000, SHD-R 3000, HDI 38/12	WRP 16000, WRP 8000, HDR 777	Puzzi 30/4, Puzzi 10/2, Puzzi 10/1, Puzzi 8/1 C

TECHNICAL DATA AT A GLANCE

COLD WATER HIGH-PRESSURE CLEANERS

	Power supply (phases)	Power rating (kW)	Flow rate (l/h)	Max. pressure (bar/MPa)	Working pressure (bar/MPa)
HD super class					
HD 13/18-4 S / SX Plus	3	9,2	650-1300	198/19,8	30-180/3-18
HD middle class					
HD 9/20-4 MX Plus	3	7,0	460-900	220/22	40-200/4-20
HD 7/18-4 MX Plus	3	5,0	240-700	215/21,5	30-180/3-18
HD 6/16-4 MX Plus	1	3,4	230-600	190/19	30-160/3-16
Stationary high-pressure cleaners for use with unheated water (70-85 °C)					
HD 13/12-4 ST	3	6,4	650-1300	150/15	30-120/3-12

HOT WATER HIGH-PRESSURE CLEANERS

	Power supply (phases)	Power rating (kW)	Flow rate (l/h)	Working pressure (bar/MPa)	Max. temperature (°C)
HDS super class					
HDS 2000 Super	3	2×6,7	800-1850	30-180/3-18	80/98
HDS 13/20-4 S	3	9,3	600-1300	30-200/3-20	80/155
HDS 12/18-4 S / SX	3	8,4	600-1200	30-180/3-18	80/155
HDS middle class					
HDS 9/18-4 M / MX	3	6,4	450-900	30-180/3-18	80/155
HDS 8/18-4 M / MX	3	5,5	400-800	30-180/3-18	80/155

INDUSTRIAL HIGH-PRESSURE CLEANING SYSTEMS

	Max. pressure (bar)	Output (l/h)	Heating capacity (kW)	Max. supply temperature (°C)	Power rating (kW)
Stationary ultra-high-pressure cleaners (industrial)					
HDC Advanced	100	700-12000	-	85	11/44
HDC Classic	160/80	700-2000	-	85	11/5,5

SWEEPERS/VACUUM SWEEPERS

	Traction drive	Power (HP)	Working width (mm)	Waste container (l)	Hydraulic container lift
Vacuum sweepers					
MC 50	4WD	26	900-1400	500	■

■ Included

SWEEPERS/VACUUM SWEEPERS

	Working width without / with 1 / with 2 side brushes (mm)	Waste container (l)	Max. area performance (m²/h)	Indoor use	Outdoor use
Ride-on vacuum sweepers					
KM 170/600 R	1350/1680/2000	600	28000	■	■
KM 150/500 R	1200/1500/1800	500	12000-18000	■	■
KM 130/300 R	1000/1300/1150	300	9100-13000	■	■
KM 120/150 R	850/1200/-	150	9600	■	■
KM 105/110 R	640/1050/1400	110	9800	■	■
KM 105/100 R	640/1050/1400	100	9800	■	■
KM 90/60 R	615/900/1150	60	9200	-	■
Vacuum sweepers					
KM 85/50 W	610/850/1050	50	4725	-	■
KM 80 W	800/-/-	40	1680	-	■
KM 75/40 W	550/750/-	40	3375	-	■
Walk-behind sweepers					
KM 70/30 C	480/700/-	42	2800	■	■
KM 70/20 C	480/700/-	42	2800	■	■
KM 35/5 C	350/-/-	5	1480	■	■

DRY VACUUM CLEANERS

	Air flow rate (l/s)	Vacuum (mbar/kPa)	Max. power rating (W)	Sound level (dB(A))
Dry vacuum cleaners				
T 17/1	61	244/24,4	1150	77
T 12/1 ecoefficiency	43	230/23	750	65
T 12/1	61	244/24,4	1150	65
T 10/1 Professional	61	244/24,4	1100	62
T 7/1	54	245/24,5	1050	62
Upright vacuum cleaners				
CV 38/2	48	250/25	1050	67

WET AND DRY VACUUM CLEANERS

	Air flow rate (l/s)	Vacuum (mbar/kPa)	Max. power rating (W)	Sound level (dB(A))
Tact class				
NT 65/2 Tact² Tc	2 × 74	254/25,4	2760	73
NT 65/2 Tact²	2 × 74	254/25,4	2760	73
NT 55/1 Tact	74	254/25,4	1380	69
NT 45/1 Tact Te Ec	63	244/24,4	1380	71
NT 45/1 Tact	74	254/25,4	1380	69
Ap class				
NT 65/2 Ap	2 × 74	254/25,4	2760	73
NT 65/2 Eco	2 × 56	235/23,5	2750	74
NT 35/1 Ap	74	254/25,4	1380	70
Standard class				
NT 70/2 Me Tc	2 × 56	208/20,8	2400	75
NT 70/2 Tc	2 × 56	208/20,8	2400	75
NT 70/2	2 × 56	208/20,8	2400	75

SCRUBBERS/SCRUBBER DRIERS

	Brush / suction working width (mm)	Theoretical working capacity (m ² /h)	Practical working capacity (m ² /h)	Fresh / dirty water tank (l)
Ride-on scrubber driers				
B 250 R	1000-1200/1160-1400	8000-9600	4500-5400	250 / 250
B 150 R	750-900/940-1060	4500-5400	3375-4050	150 / 150
B 90 R	550-750 / 850-940	3300-4500	2475-3375	90 / 90
Scrubber driers step-on				
BD 60/95 RS	600 / 830	3300	2475	95 / 95
B 95 RS	650-750 / 940	2600-3000	2625/3075	95 / 95
BR 55/40	550 / 716	2350	1765	40 / 40
BD 50/40	508 / 691	2200	1650	40 / 40
Walk-behind scrubber driers				
B 120 W	750-900 / 940-1160	3000-3600	2600	120 / 120
B 80 W	650-750 / 850-940	2200-3000	1950-2250	80 / 80
B 60 W	510-650 / 850-940	2040-2600	-	60 / 60
B 40 C/W	430-550 / 850	1700-2200	-	40 / 40
Compact scrubber driers				
BR 40/25 C Ep	440 / 770	1600	1100	25 / 25
BD 40/12 C	385 / 450	1100	750	12 / 12
BR 40/10 C	400 / 400	400	300	10 / 10
BD 38/12	380 / 480	1500	1000	12 / 12
BR 35/12	350 / 450	1400	950	12 / 12
BR 30/4 C	300 / 300	200	130	4 / 4

MANUAL CLEANING EQUIPMENT

ECO!Cleaning	
Clean Liner Classic	with mop press, bin liner holder and bucket
Eco spray mop system	with detachable tank and folding tray

VEHICLE CLEANING, WATER RECLAMATION

	Washing height (mm)	Fresh water supply (l/min, bar)	Connected load (kW)	Power supply (~ V / Hz)
Commercial vehicle washes				
TB 50	5050	100, 4-6	5,3	3 / 400 / 50
TB 46	4600	100, 4-6	5,3	3 / 400 / 50
TB 42	4250	100, 4-6	5,3	3 / 400 / 50
TB 36	3600	100, 4-6	5,3	3 / 400 / 50
RBS 6014	4205	mind. 80, 3-6	1,15	variabel
RBS 6012	3645	mind. 80, 3-6	1,15	variabel
	Reclaimed water production (l/h)	Power supply (~ V / Hz)	Buffer tank capacity (l)	Dimensions L x W x H (mm)
Water reclamation				
WRP 8000/16000	max. 3000	1/230/50	1000-3000	-
HDR 777	max. 800	-/-/50	-	1300 x 630 x 1300

VEHICLE CLEANING, WATER RECLAMATION

	Throughput (l/h)	Max. pressure (bar)	Max. temperature (°C)	Electric drive (~ V / Hz / kW)	Weight (kg)
Container interior cleaning systems					
Based on modular components, Kärcher container interior cleaning systems are designed, according to your requirements, with energy and operational costs in mind. Kärcher will impress you with innovative concepts and a comprehensive service. Range of the available modular components:					
HP pump HDI 38/12	3800	120	80	3/400/50/15,5	220
HWE 4000 Gas*	2000-6000	140	90	1/230/50/0,75	550
Spray head HKF 50 P	1200	100	95	-	7
Spray head HKS 100	2400-6000	40-100	80	-	6
Spray head HKF 200 E	10000	200	95	3/400/50	35
*Hot water generator					

CARPET CLEANING MACHINES, STEAM CLEANER

	Deep / interim cleaning area performance (m ² /h)	Brush working width (mm)	Suction working width (mm)	Fresh / dirty water tank (l)
Carpet cleaning machines				
Puzzi 30/4	60-75	-	-	30 / 15
Puzzi 10/2	30-45	-	-	10 / 9
Puzzi 10/1	20-25	-	-	10 / 9
Puzzi 8/1 C	12-18	-	-	8 / 7
BRC 30/15 C	150 / -	270	315	15 / 17
BRS 43/500 C	300	430	-	7,5 / -

RECOGNISING THE SIGNS OF THE TIMES

If you want to move and change things, you have to lead the way, and show your colours. The blue symbols representing the various building blocks of Kärcher ecoefficiency show at a glance how and where Kärcher's power of innovation achieves measurably greater and better efficiency. Kärcher ecoefficiency is about more than efficient products: it is implemented in all business areas and is an integral part of corporate policies and actions.



Measurable time saving

The simple equation of time equals money is still valid, however multiplied by the efficiency factor. More efficient machines that allow work to be carried out more quickly lead to significant labour cost savings and genuine competitive advantages.



High recyclability

Raw materials that cannot be avoided from the beginning must be recyclable as far as possible after a long machine life. Kärcher machines are currently more than 90% recyclable.



Reduced water consumption

Drinking water is precious and conserving it protects natural resources and saves energy for processing, transport and disposal. Many Kärcher high pressure cleaners and scrubber driers already meet the ecoefficiency standard or feature an ecoefficiency mode, which efficiently regulates the amount of water depending on the cleaning task.



Less noise

Noise is not just unpleasant, it has shown to be damaging to health. Kärcher counters working noise both in its own production processes and for users by reducing noise levels and power to an optimum level. An example of this is the T 12/1 ecoefficiency dry vacuum cleaner. Its working noise level has been reduced by 5 dB(A) compared to the basic model, making it over 50% quieter. Furthermore, the low frequency of the work noise is subjectively perceived as being very pleasant. As a result, the T 12/1 ecoefficiency is also outstandingly suitable for longer work intervals and noise-sensitive areas.



Intelligent energy efficiency

Everything has its limits. Sometimes more power does not make sense. The T 12/1 ecoefficiency dry vacuum cleaner proves that less can be more. Its 750 W motor uses 40% less electricity, achieving 98% of the cleaning performance of the standard model thanks to flow-optimised suction channels, which is more than sufficient for maintenance cleaning.



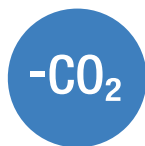
Exemplary reparability

As early as the development phase, Kärcher machines are designed for reparability: as few components and assemblies as possible, the best possible accessibility and as many standard parts as possible.



Materials to suit the job

The selection of optimal materials is a never-ending challenge. New materials and production processes open up new opportunities in manufacturing and the use of machines, accessories and consumables. Lightweight design, durability, avoidance of contaminants, recyclability and costs – standards that Kärcher takes into account in the manufacture of efficient and eco-friendly products.



Reduced CO₂ emissions

Reducing CO₂ greenhouse gas emissions is a global objective. To reduce its CO₂ footprint, Kärcher is making its contribution on all levels of production and in all business areas: through optimised use of materials, energy and water, high recyclability, as well as self-generated renewable energy.



Optimised company processes

Kärcher ecoefficiency simply means continuously trimming all processes in the company to achieve maximum efficiency. This results in constant optimisation in all areas.



Less waste water pollution

It is as easy as it sounds: water that has not been used, does not need to be disposed of. At the same time, dirty water should be concentrated in order to make work easier for sewage treatment plants. The Kärcher system, consisting of the device, accessories and cleaning agents is fine-tuned to achieve maximum effect with minimum effort.



Extended service life

The robust construction style and high strength are the key prerequisites for a long usage phase. High quality, reparability and a long-term spare parts supply ensure that Kärcher Professional machines give years of reliable service.



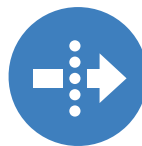
Precisely dosed cleaning agent

The most environmentally friendly and economical cleaning agent is that which is not used. Kärcher DOSE technology enables exact dosage of cleaning agents and, as a result, achieves a much lower level of consumption.



Reduced use of materials

If there is one art that is efficient, it is the art of reduction. Less material consumption through optimised designs is one aspect. Another is reducing the number of components. On average, Kärcher machines consist of significantly fewer components than comparable competitor models. The resulting lighter weight not only saves driving energy, it also saves a serious amount of raw materials and energy in manufacture.



Effective dust filtering

Dust is a nuisance to people and the environment and can be detrimental to health and the environment. Kärcher vacuums feature efficient filter systems with innovative components, e.g. Tact and Tact² systems for fully automatic filter cleaning as well as HEPA filters for hygienically clean, particle-free exhaust air. Fleece filter bags with a better degree of separation, double the retention capacity and a longer service life compared to paper filter bags. And last, but not least, certified safety vacuum cleaners for critical applications.



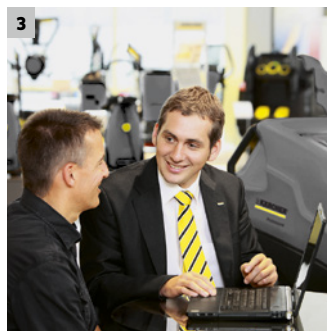
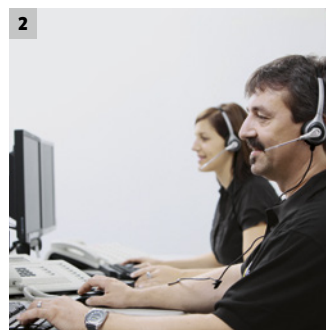
Comprehensive spare parts supply

Durable investment goods can only fully develop their economical and environmental advantages if all spare parts are available until the end of their service life. Depending on the particular product, Kärcher guarantees a spare parts supply for up to 10 years after a model goes out of production.

e eco!efficiency

KÄRCHER SERVICE – YOU CAN COUNT ON US

If the word service is a promise and not a slip of the tongue, trust is the basis. Because you must be able to rely on your professional cleaning machines at all times. Day after day. Night after night. Everywhere. This is our aim. And we do our best to ensure this. Reliable cleaning machines and detergents. Advanced technologies. Competent advice and training. And much more. In short: Kärcher service. A name you can trust. And a service that gives you security. That's our promise.



We are there for you, wherever you need us.

Kärcher stands for top performance – not just in products, but also in service. As the world's largest manufacturer of cleaning machines, we are there for our customers all around the world and at more than 50,000 service and sales points. This is how we give you peace of mind. Kärcher – your reliable partner.

1 Planning

Kärcher also provides sound advice for your detailed project and property planning. We calculate exactly which resources you need and how you can configure your machines and equipment for optimal results.

2 Hotline*

Friendly. Competent. Solution-oriented. Kärcher hotline staff are familiar with all products, accessories and detergents and can provide sound advice and assistance by telephone.

3 Service contracts

Consistent top performance: with our service contracts you can be assured that your Kärcher products will operate reliably at all times, thanks to regular inspection and maintenance or an all-inclusive full service package.

4 Application advice

We provide application advice to ensure that you always have the most efficient solution. Area, staff and schedule are the decisive factors in determining the products that best suit your needs.



5 Global presence

Kärcher guarantees you personal service. Our global service and sales network ensures that you always have a competent contact partner locally, for all enquiries regarding service, advice or sales.

6 Technical training

Get the most out of your equipment: with our local technical training courses, we can show your employees how to use innovative Kärcher products to clean every type of facility optimally.

7 We come to you

Our service management system saves you time and money and ensures that we are with you as quickly as possible. With regular service calls as part of the full service package, and always whenever you need us.

8 Extended warranty

Our extended warranty or machinery breakdown insurance will give you peace of mind and ensure that your Kärcher products have optimal cover.

9 Leasing

Control your cash flow and remain productive with low leasing fees instead of major investments. Including a maintenance contract if required.

10 Rental machines

Stay as flexible as the market – with Kärcher rental machines you always have the equipment you really need, when you actually need it. Contact us to discuss your options.

11 Refurbished machines

Machines in top condition at very attractive terms. A new machine is not always cost-effective. Refurbished Kärcher machines are a cost-effective alternative for your project planning.

ENTHUSIASM. INNOVATION. SUCCESS.

Since its beginnings more than 75 years ago, as a value-oriented family business, Kärcher has become a world brand with three strong attributes: top performance, innovation and quality. Today, the Kärcher brand enjoys the reputation of being a global leader and resource-conserving supplier of professional cleaning systems and is synonymous with reliable products, optimal user value and ongoing commitment to the environment, culture and sport.



1 Seattle's highest building: the Space Needle

A Kärcher team pressure-washed the structure up to a height of 184 m. The job took eight weeks, working only at night.



2 A facelift for the heads of state

Clean again: In 2005 Kärcher cleaned the National Memorial on Mount Rushmore.



3 Innovative right from the start

In 1950, Kärcher developed the first hot water high-pressure cleaner in Europe for professional cleaning.



4 Clean environment

Kärcher works on environmental protection every day, with new products, technologies and investments in production facilities.

5 In-house research and development

Kärcher develops high-performance cleaning machines, accessories and special cleaning and care products.

6 Internationally represented

We are there for our customers all around the world.

7 Commitment to sports

Clean performance on the pitch. For several years, Kärcher has supported German and international football as a partner.

Please contact us for more information:

Head Office Germany

Alfred Kärcher GmbH & Co. KG
Alfred-Kärcher-Straße 28-40
71364 Winnenden

Phone +49 7195-14-0
Fax +49 7195-14-2212

www.kaercher.com

North America

Kärcher North America
4555 Airport Way
Denver, CO 80239
USA

Phone +1 303-738-5805
Fax +1 303-865-2758

www.karcherna.com

United Kingdom

Kärcher (UK) Ltd
Kärcher House
Beaumont Road
Banbury
Oxon OX16 1TB

Phone +44 1295-752-000
Fax +44 1295-267-511

www.karcher.co.uk

Ireland

Kärcher Ltd
Unit 4
E.P. Mooney Business Park
Walkinstown Avenue
Dublin 12

Phone +353 1-409-7777
Fax +353 1-409-7775

www.karcher.ie

South East Asia

Regional Head Office
South East Asia

Karcher South East Asia Pte Ltd
3 Depot Close #01-01
Singapore 109840

Phone +65 6897-1811
Fax +65 6897-1611

www.karcher.com.sg

Hong Kong

Kärcher Limited
Unit 05, 13/F, Nanyang Plaza
57 Hung To Road
Kwun Tong, Kowloon

Phone +852 2-357-5863
Fax +852 2-357-5632

www.karcher.com.hk

Australia

Karcher Pty Ltd
40 Koornang Road
Scoresby VIC 3179
Melbourne, Victoria

Phone +61 3-9765-2300
Fax +61 3-9765-2398

www.karcher.com.au

New Zealand

Karcher Ltd
66 Allens Road
East Tamaki
Auckland 2013

Phone +64 9-274-4603
Fax +64 9-274-6932

www.karcher.co.nz

South Africa

Kärcher (Pty) Ltd
Cnr Mount Joy & George Allen Rd
Wilbart Ext. 2
PO Box 11818
Vorna Valley, 1686

Phone +27 11-657-7300
Fax +27 11-657-7440

www.karcher.co.za

Dubai

Karcher FZE
Quality Cleaning Systems
Jebel Ali Free Zone
Plot No. S-10104 South Zone
RA 08, XB 1, Jebel Ali

Phone +971 4-886-1177
Fax +971 4-886-1575

www.kaercher.com